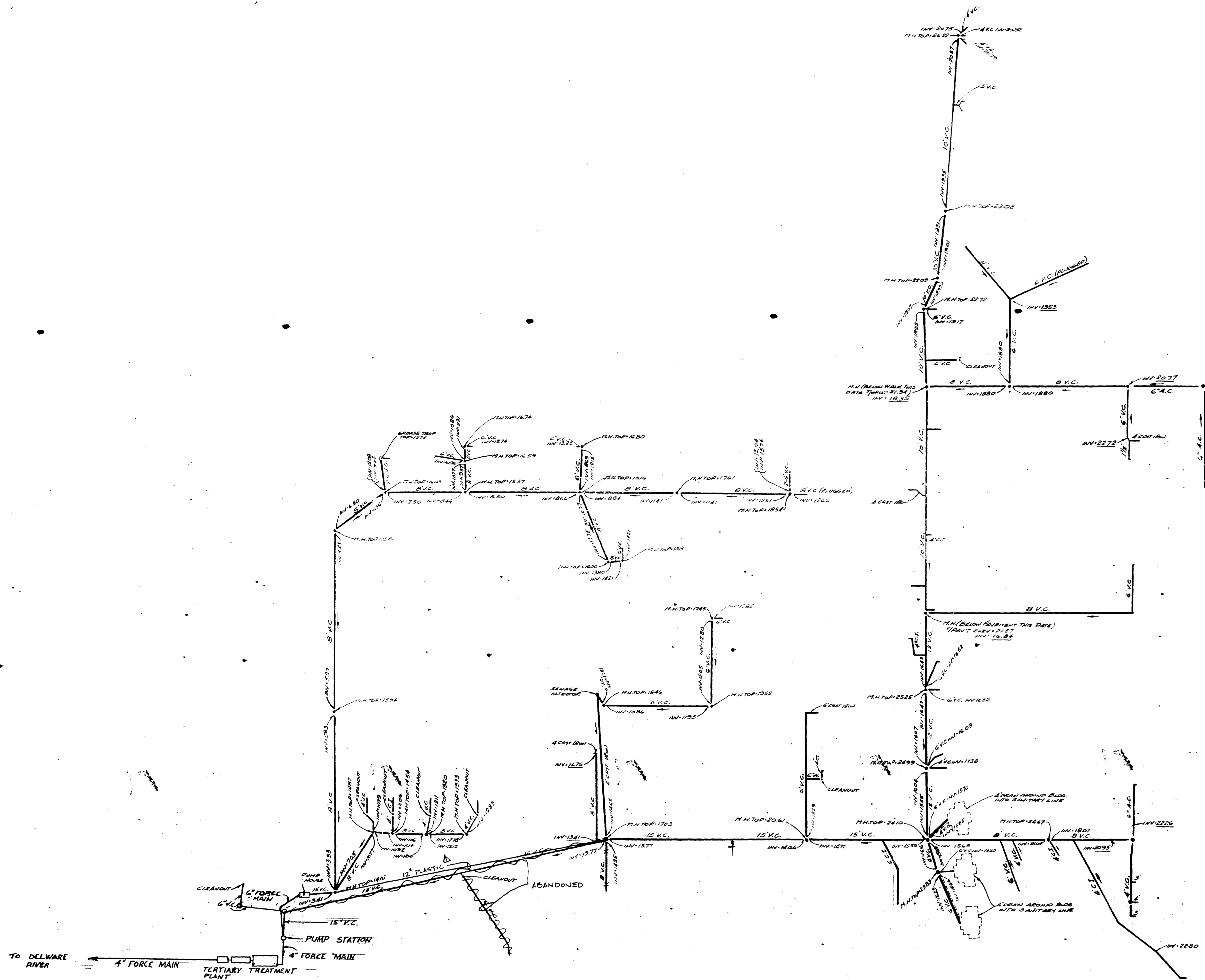


- LEGEND**
- 8" SANITARY SEWER LINE, WITH SIZE
  - SANITARY MANHOLE
  - DIRECTION OF FLOW
  - 12" SANITARY SEWER LINE WITH SIZE (EXISTING NOT TO BE RETAINED)

- ABBREVIATIONS**
- C CONCRETE
  - AC ASBESTOS CEMENT
  - VC VITRIFIED CLAY
  - CI CAST IRON

ELEVATIONS SHOWN HEREON THIS SHEET, THUS 23.52 (UNDERLINED) REPRESENT ELEVATIONS TAKEN FROM MAP NO. DM73, DELAWARE ORDNANCE DEPOT OFFICE OF THE POST ENGINEER.



AS BUILT SIGNED  
 ERNEST A. KAUSCHKE  
 NJ LIC. NO. 14356

NJ023-0187

REVISION	DATE	DESCRIPTION	BY
1	10/24/62	SEWER LINE CHANGE	PJD
U. S. ARMY ENGINEER DISTRICT, NEW YORK CORPS OF ENGINEERS NEW YORK 3, NEW YORK			
DRAWN BY: <i>J.K. A.L.</i>		ARMY AIR DEFENSE PROGRAM BASIC INFORMATION MAPS GENERAL SANITARY SEWER MAP	
CHECKED BY:			
DESIGNED BY: <i>B.J.M.</i>			
SUBMITTED BY: <i>M.D. Fialler</i> CHIEF, LEISER BRANCH		PHIL. AIR DEF. SITE (PADS) PEDRICKTOWN, NEW JERSEY	
REVIEWED BY: <i>Stacy P. Hensel</i> ASSISTANT CHIEF, ENGINEERING DIVISION		RECOMMENDED BY: <i>Ernest A. Kauschke</i> CHIEF, ENGINEERING DIVISION	
APPROVED BY: <i>C.M. Dicks</i> COLONEL, U.S. DISTRICT ENGINEER		SCALE AS SHOWN	
DATE: 15 MARCH 1962		DRAWING NUMBER: 18-02-02 SHEET 4 OF 10	

FILE NO. 7680-254  
**PEDRICKTOWN** 1309

M-62-E