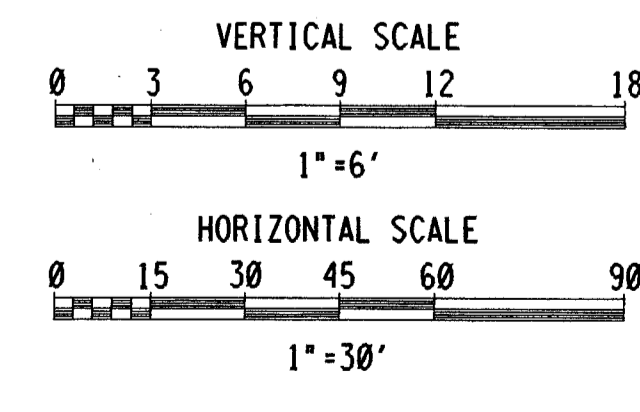
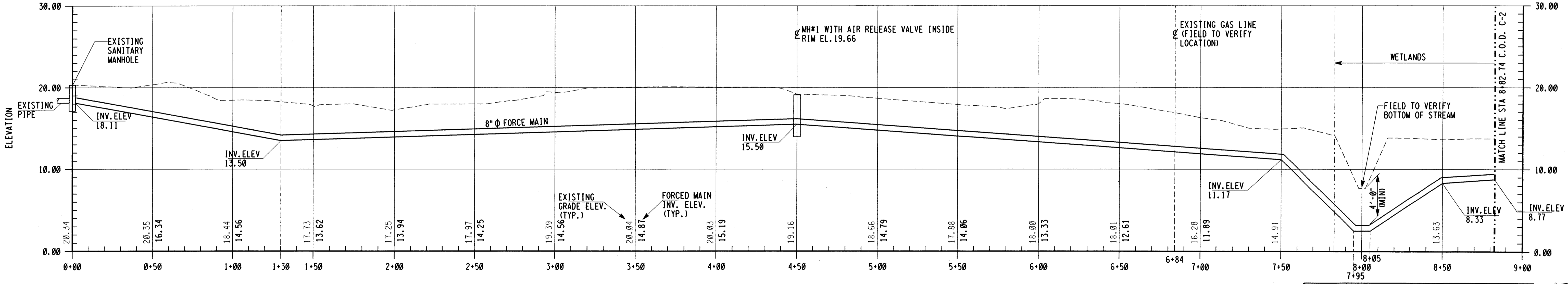
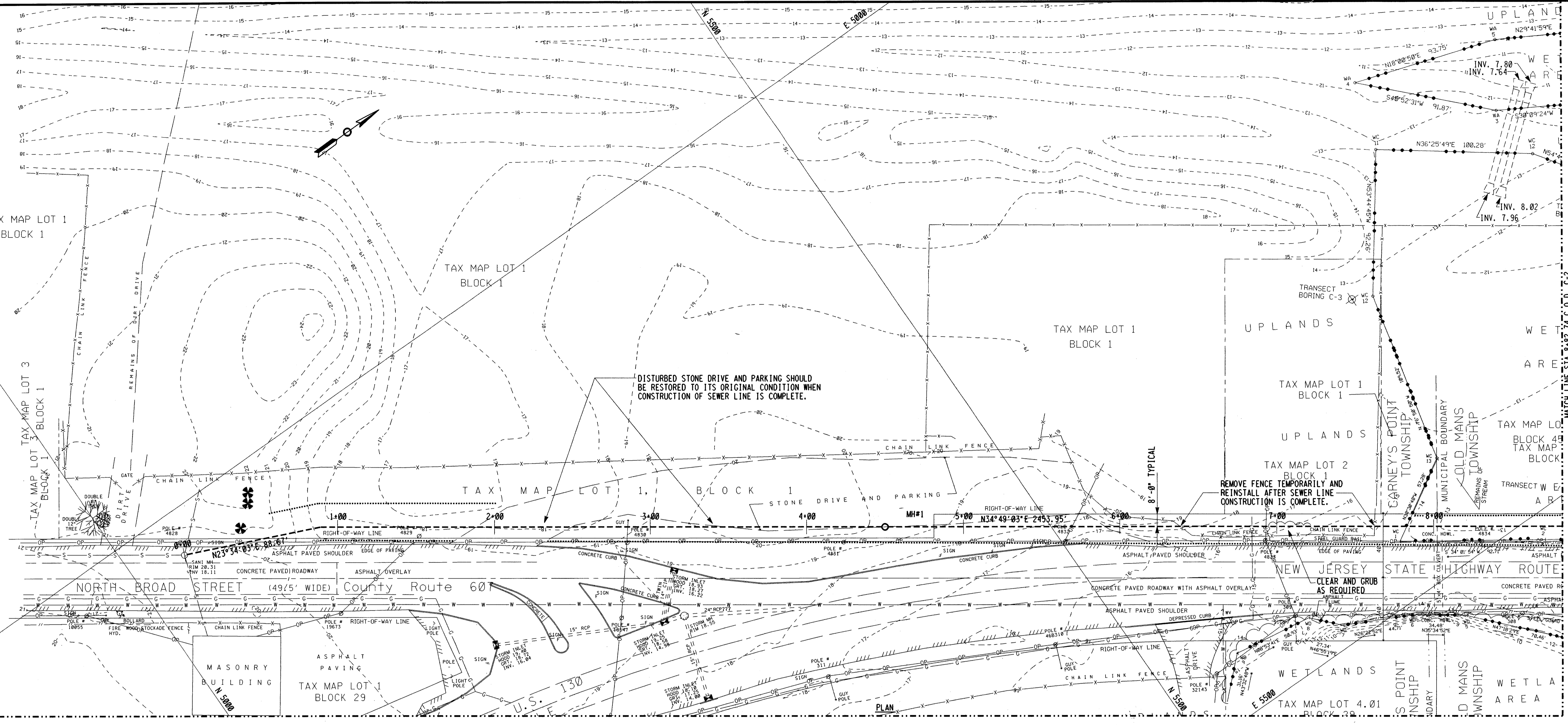


- NOTES:
- EXISTING INFORMATION SHOWN ON THIS DRAWING IS BASED ON TOPOGRAPHIC SURVEY DRAWING OF ATKINSON & WALTON INC. CIVIL & ENVIRONMENTAL ENGINEERS LAND SURVEYORS & PLANNERS, 180 TUCKERTON ROAD, SUITE 11, MEDFORD, NEW JERSEY 08055, DATED AUGUST 25, 1995.
 - ELEVATIONS AND CONTOURS AS SHOWN HEREON ARE BASED ON USGS 1927 DATUM AS DETERMINED FROM SUPPLIED PLANS OF THE SIEVERS-SANDERS U.S. ARMY RESERVE CENTER, PEDRICKTOWN, NEW JERSEY.
 - BENCH MARK IS TOP OF SANITARY SEWER MANHOLE ON THE SOUTHERLY SIDE OF WEST ROAD BETWEEN SOUTH AVENUE AND DEPOT AVENUE AND DIRECTLY OPPOSITE THE PUMP HOUSE FOR THE SEWERAGE TREATMENT PLANT; ELEV. 14.15.
 - WETLANDS DELINEATION IS BASED ON A WETLANDS STUDY BY ATKINSON & WALTON, INC., DATED SEPTEMBER 1, 1995.
 - LIMITS OF WORK ARE NOT IN THE 100 YEAR FLOOD PLAIN.
 - LOCATIONS OF EXISTING UTILITIES SHOWN ON DRAWINGS C1 THRU C5 ARE APPROXIMATE AND SHOULD BE VERIFIED IN THE FIELD.

- LEGEND:
- ⊙ EXISTING WATER VALVE
 - ⊕ EXISTING FIRE HYDRANT
 - ⊗ EXISTING POLE
 - ⊛ EXISTING LIGHT POST
 - EXISTING MANHOLE
 - ⊙ MH#1 NEW MANHOLE
 - ⊠ EXISTING STORM DRAINAGE INLET
 - G — EXISTING GAS LINE
 - W — EXISTING WATER LINE
 - S — EXISTING STORM LINE
 - S — EXISTING SANITARY SEWER
 - S — NEW SANITARY SEWER
 - OP — EXISTING OVERHEAD POWER LINES
 - 19 — EXISTING CONTOUR
 - X — EXISTING FENCE
 - — — — — RIGHT-OF-WAY LINE
 - — — — — PROPERTY LINE
 - — — — — ROAD CENTERLINE
 - — — — — EDGE OF WETLANDS
 - — — — — SILT FENCE
 - — — — — LIMIT OF DISTURBED AREA
 - ⊕ DECIDUOUS TREE
 - ⊗ EVERGREEN TREE



NJO13-0717

SYMBOL	DESCRIPTION	DATE	APPROVED
REVISIONS			
FOSTER WHEELER USA CORPORATION PERRYVILLE CORPORATE PARK, CLINTON, N.J.		UNITED STATES ARMY GARRISON FORT DIX DIRECTORATE OF PUBLIC WORKS FORT DIX, NEW JERSEY 08640	
DRAWN	JJG	NEW WASTEWATER LIFT STATION AND FORCED MAIN SIEVERS-SANDBERG US ARMY RESERVE CENTER PEDRICKTOWN, NEW JERSEY	
DESIGNED	WRL		
CHECKED	JCM		
FP&P DIV			
ENV DIV	USING AGENCY	SITE PLAN	
O & M DIV	DOIM		
RECOMMENDED:	CHIEF ENGINEERING PLANS & SERVICES	SCALE:	1" = 30'
APPROVED:		DATE:	OCT. 25, 1996
REGIONAL DIRECTORATE OF PUBLIC WORKS		PR. NR.:	GM-00036-5P
		DRAWING NUMBER:	C-1
		SHEET	10 OF 18

13-05-37389

Code Rev. No. 15 22-OCT-96 003738905-38905001.dgn