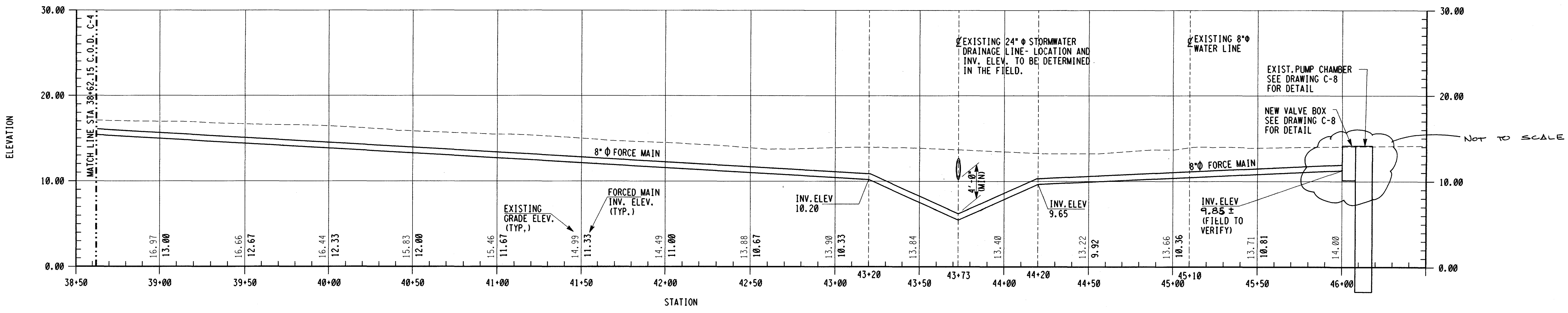
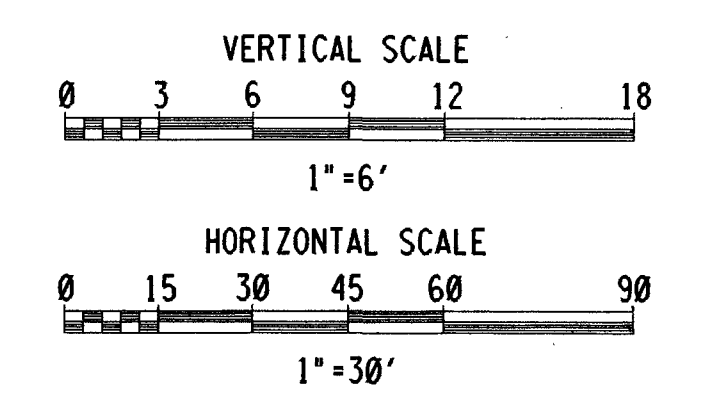


PLAN



PROFILE



NJ013_0121

SYMBOL	DESCRIPTION	DATE	APPROVED
FOSTER WHEELER USA CORPORATION <small>PERRYVILLE CORPORATE PARK, CLINTON, N. J.</small>			
UNITED STATES ARMY GARRISON FORT DIX DIRECTORATE OF PUBLIC WORKS FORT DIX, NEW JERSEY 08640			
DRAWN	WRL	NEW WASTEWATER LIFT STATION AND FORCED MAIN SIEVERS-SANDBERG US ARMY RESERVE CENTER PEDRICKTOWN, NEW JERSEY	
DESIGNED	JJG		
CHECKED	JCM		
FP&P DIV			
ENV DIV			
O & M DIV	DOIM	SITE PLAN	
RECOMMENDED:	CHIEF ENGINEERING PLANS & SERVICES	SCALE:	1" = 30'
APPROVED:		DATE:	OCT. 25, 1996
	REGIONAL DIRECTORATE OF PUBLIC WORKS	PR. NR:	GM-00036-5P
		DRAWING NUMBER	C-5
		SHEET	14 OF 18

13-05-37389