



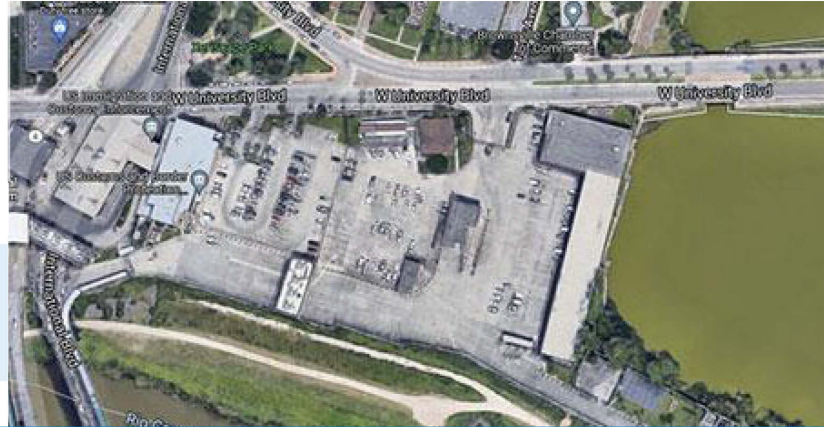
U.S. General Services Administration

# Brownsville/ Gateway

## Land Port of Entry

Border crossing station in Brownsville, Texas

Budget: \$115 Million to \$135 Million



### Primary Tenants



### Project Overview

The Brownsville (Gateway) Land Port of Entry is located on 7.13 acres in Brownsville, Texas. The site is located within a fully developed urban site and is landlocked. The port has been in operation since the 1920's but it wasn't until 1957 that it began to take its current shape. In the 1990's, the port underwent a renovation but has not seen any updates since then.

### Current Status

GSA is currently in the process of conducting a Program Development Study (PDS). The estimated completion date of the PDS is August 2023. This study is intended to further develop the preferred alternative based on the 2018 Feasibility Study. The study will also include a master plan for project execution and will result in the scope of work for the design/build contractor that includes project phasing and scope options to deliver as many of the design requirements as possible with the available budget.

### Project Timeline



The Bipartisan Infrastructure Law includes \$3.4 billion for GSA to modernize and construct land ports of entry along the nation's borders. These projects will strengthen supply chains, create good-paying jobs, enhance safety and security, and serve as models of sustainability.



**Jason Williams, Regional Project Manager, [jason.williams@gsa.gov](mailto:jason.williams@gsa.gov)**  
<https://www.gsa.gov/real-estate/gsa-properties/land-ports-of-entry-and-the-bil/bipartisan-infrastructure-law-construction-project/texas#el-paso-border>

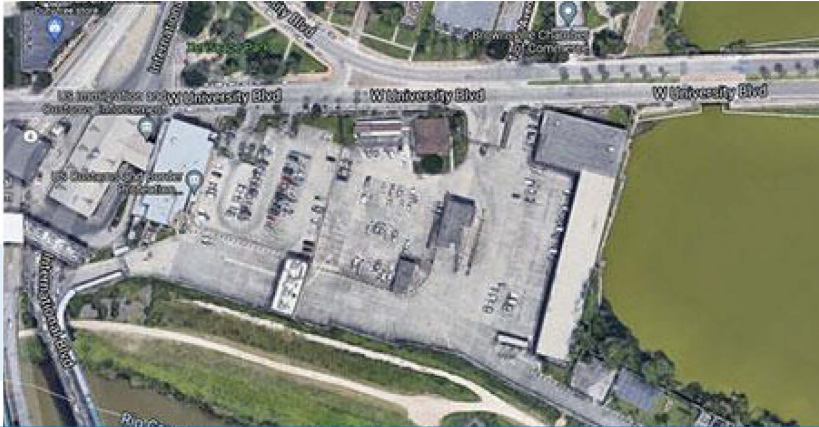


# Brownsville/ Gateway

## Land Port of Entry

Border crossing station in Brownsville, Texas

Budget: \$133,103,000



### Primary Tenants



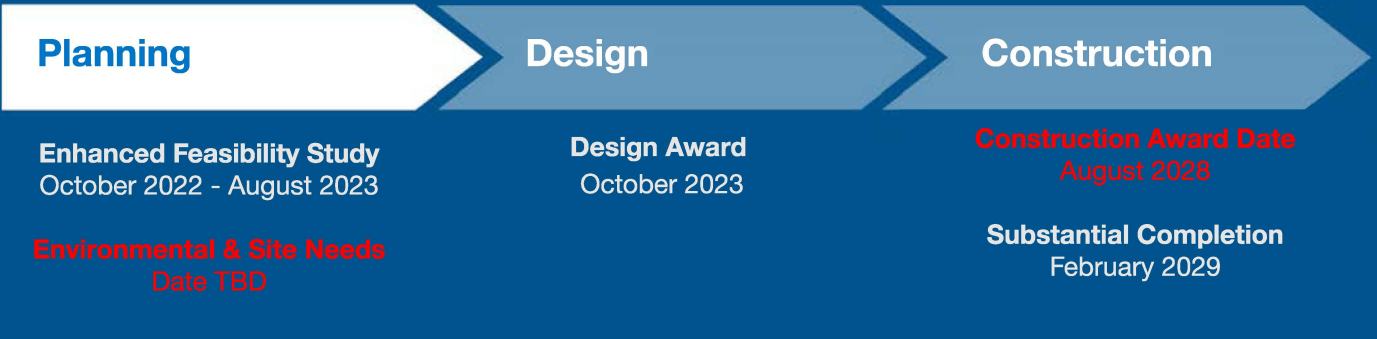
### Project Overview

The Brownsville/Gateway Land Port of Entry (LPOE) is located on 7.13 acres in Brownsville, Texas. The site is located within a fully developed urban site and is landlocked. The port has been in operation since the 1920's but it wasn't until 1957 that it began to take its current shape. In the 1990's, the port underwent a renovation but has not seen any updates since then.

### Current Status

GSA is currently in the process of conducting a Program Development Study (PDS). The estimated completion date of the PDS is August 2023. This study is intended to further develop the preferred alternative based on the 2018 Feasibility Study. The study will also include a master plan for project execution and will result in the scope of work for the design/build contractor that includes project phasing and scope options to deliver as many of the design requirements as possible with the available budget.

### Project Timeline



The Bipartisan Infrastructure Law includes \$3.4 billion for GSA to modernize and construct land ports of entry along the nation's borders. These projects will strengthen supply chains, create good-paying jobs, enhance safety and security, and serve as models of sustainability.



# Brownsville/ Gateway

## Land Port of Entry

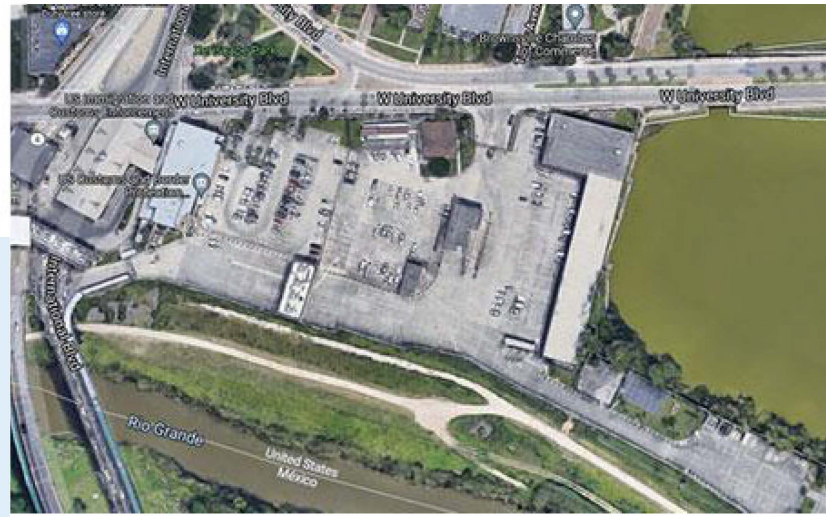
Border crossing station in Brownsville, Texas

### Facility Details

Port Size: 7.13 acres  
Year constructed: 1920's

### Budget

\$133,103,000



### Yearly Border Crossings

### Primary Tenants



Personal  
**TBD**



Commercial  
**TBD**



Pedestrian  
**TBD**



## Project Overview

The Brownsville (Gateway) Land Port of Entry is located on 7.13 acres in Brownsville, Texas. The site is located within a fully developed urban site and is landlocked. The port has been in operation since the 1920's but it wasn't until 1957 that it began to take its current shape. In the 1990's, the port underwent a renovation but has not seen any updates since then.

A Feasibility Study for Gateway was completed in November 2018. The study addressed major deficiencies including the site layout and building space capacity by proposing construction of more efficient facilities on the existing site.

## Current Status

GSA is currently in the process of conducting a Program Development Study (PDS). The estimated completion date of the PDS is August 2023. This study is intended to further develop the preferred alternative based on the 2018 Feasibility Study. The study will also include a master plan for project execution and will result in the scope of work for the design/build contractor that includes project phasing and scope options to deliver as many of the design requirements as possible with the available budget.



LAND PORTS OF ENTRY PROGRAM

Jason Williams, Regional Project Manager, [jason.williams@gsa.gov](mailto:jason.williams@gsa.gov)

<https://www.gsa.gov/real-estate/gsa-properties/land-ports-of-entry-and-the-bil/bipartisan-infrastructure-law-construction-project/texas#el-paso-bota>



## Administration Priorities

### Bipartisan Infrastructure Law

The Bipartisan Infrastructure Law includes \$3.4 billion for GSA to make long-overdue improvements for our nation’s land ports. It will drive the creation of good-paying union jobs that will add \$3.23 billion in total labor income across the United States. It will grow the economy sustainably and equitably by contributing an additional \$4.5 billion to the National Gross Domestic Product. Investments in these projects will incorporate sustainability features that will sharply reduce greenhouse gas emissions and mitigate environmental impact.

### Sustainability Opportunities

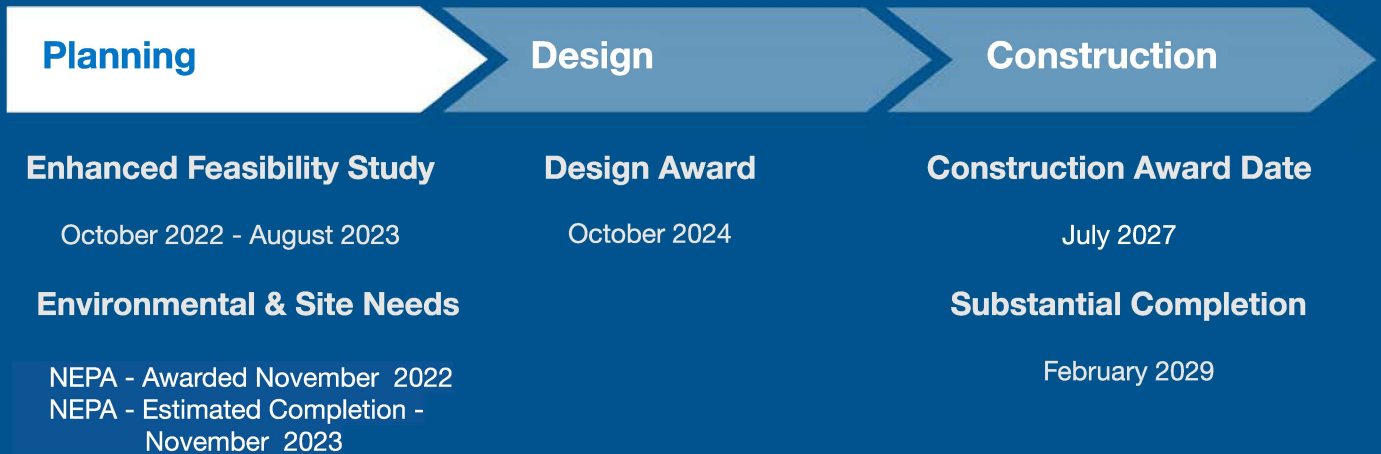
This project will be designed to conform to requirements of the Facilities Standards for the Public Buildings Service. GSA encourages design opportunities to increase energy and water efficiency (including renewable energy and fossil fuel free measures), adherence to sustainable design principles, and minimizing climate risk liabilities above the minimum performance criteria in a manner that is life cycle cost-effective.

- Net zero ready
- 80% fossil fuel-energy generated reduction
- Green Proving Ground Technology
- LEED Gold / SITES Silver
- Whole-building embodied carbon reduction

### Community Impact

This port of entry will be fully modernized with a new administration building, new pedestrian processing lanes, new primary inspection booths, new secondary inspection with new canopy, new headhouse, new hard secondary inspection, new kennels, and new visitor and employee parking. The project will help improve border security, increase POV and pedestrian traffic flow and decrease wait times for travelers.

## Project Timeline



Jason Williams, Regional Project Manager, [jason.williams@gsa.gov](mailto:jason.williams@gsa.gov)

<https://www.gsa.gov/real-estate/gsa-properties/land-ports-of-entry-and-the-bil/bipartisan-infrastructure-law-construction-project/texas#el-paso-bota>