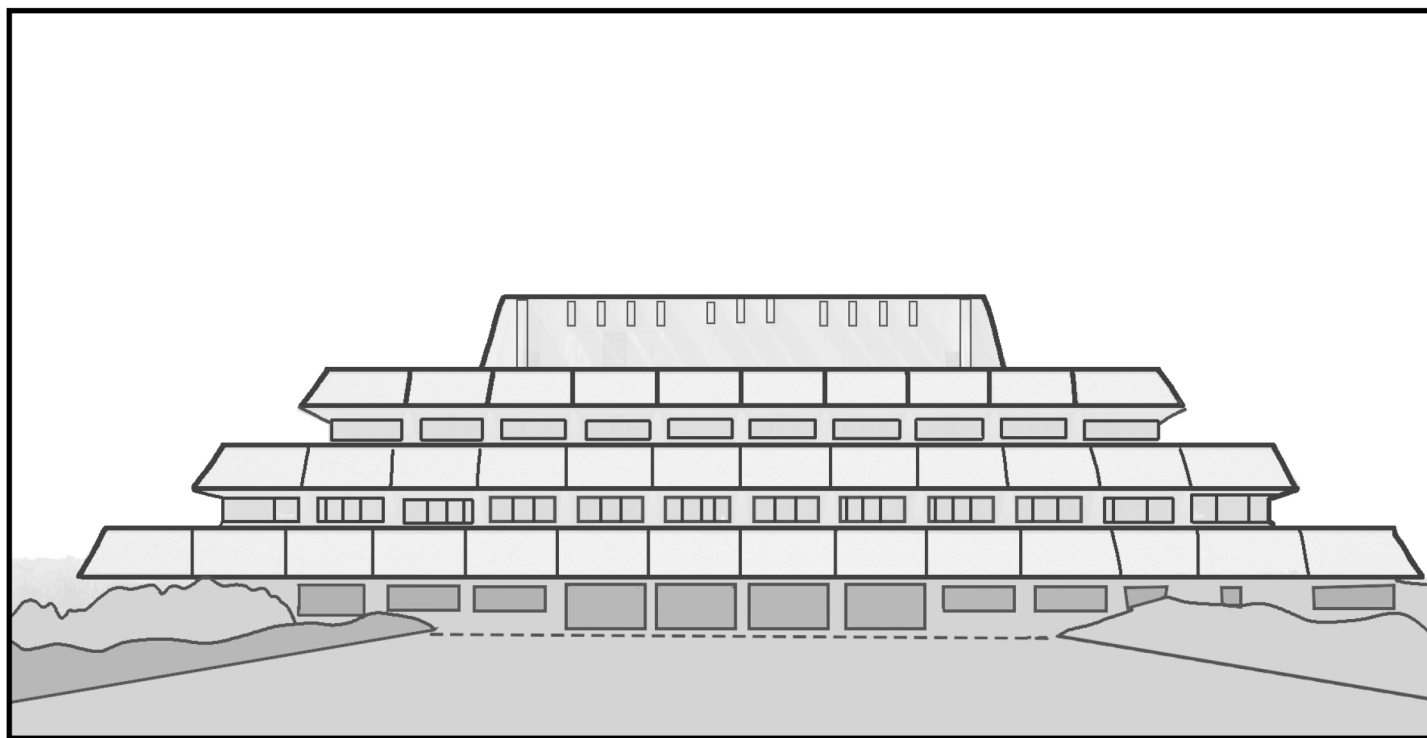




U.S. General Services Administration

Chet Holifield Federal Building

Laguna Niguel, CA



The Chet Holifield Federal Building is one of Orange County's largest and most easily recognizable buildings with its unique ziggurat-style architecture. Constructed between 1968 and 1971, it was designed by William L. Pereira & Associates, and is unlike any other in the GSA inventory.

In 1978, the building was rededicated in honor of Congressman Chet Holifield (1903-1995), who Represented California's 19th District from 1943 to 1974.



COLOR A HISTORIC FEDERAL BUILDING!

2020 Preservation Month

#ThisPlaceMatters