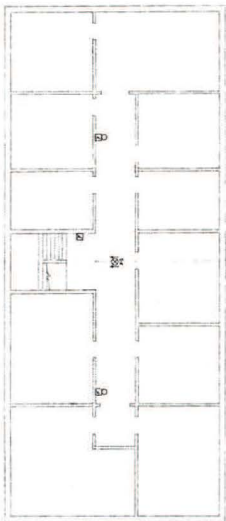


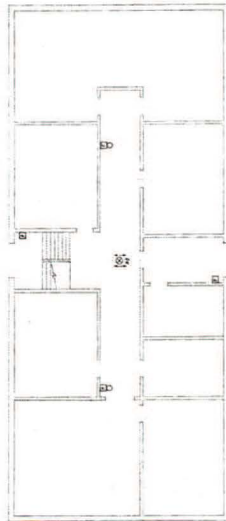
U.S. ARMY

CORPS OF ENGINEERS



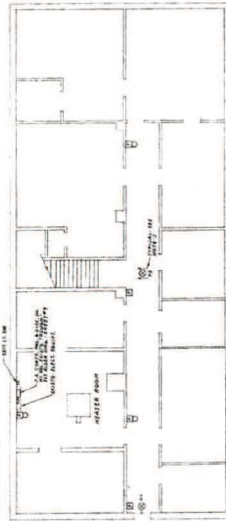
SECOND FLOOR PLAN - BLDG. NO. 171

SCALE: 1/8" = 1'-0"



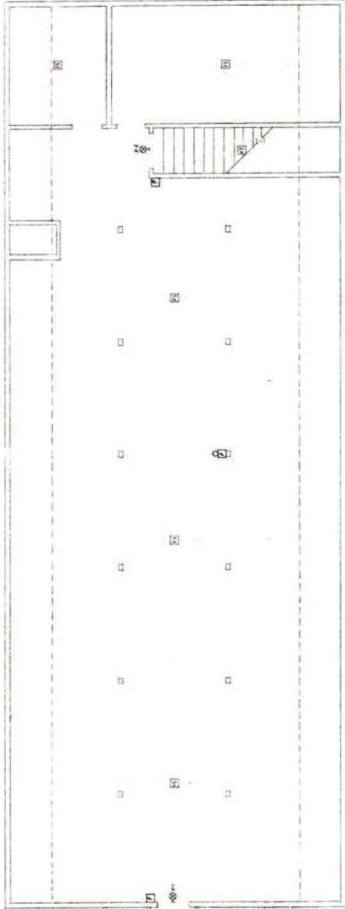
FIRST FLOOR PLAN - BLDG. NO. 171

SCALE: 1/8" = 1'-0"



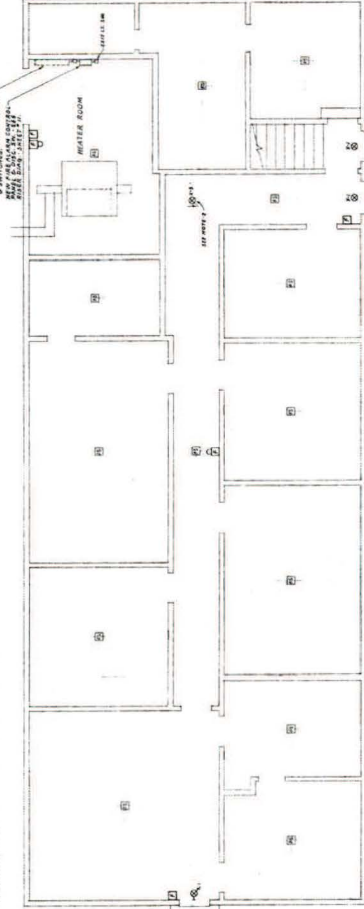
BASEMENT PLAN - BLDG. NO. 171

SCALE: 1/8" = 1'-0"



SECOND FLOOR PLAN - BLDG. NO. 282

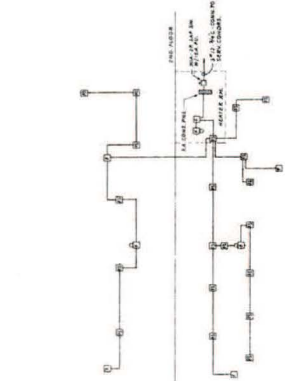
SCALE: 1/4" = 1'-0"



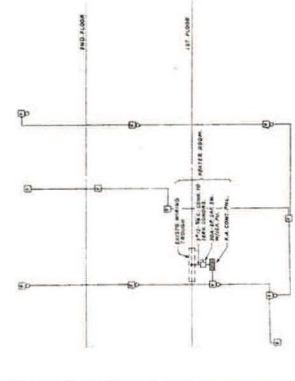
FIRST FLOOR PLAN - BLDG. NO. 282

SCALE: 1/4" = 1'-0"

NOTE:  
 1. LOCATE FIRE DETECTORS TO CLEAR LIGHTING FIXTURES.  
 2. DETECTORS TO BE LOCATED IN ALL ROOMS.  
 3. DETECTORS TO BE LOCATED IN ALL ROOMS.



FIRE ALARM RISER DIAGRAM - BLDG. 171



FIRE ALARM RISER DIAGRAM - BLDG. 282

VERIFY ALL CONDITIONS AND DIMENSIONS AT SITE.

<b>CRONHEIM &amp; WIEGER</b> ARCHITECTS & ENGINEERS 1000 MARKET STREET, PHILADELPHIA, PA. PHONE: 526-1111		U.S. ARMY ENGINEER DISTRICT, PHILADELPHIA OFFICE OF THE DISTRICT ENGINEER 2100 MARKET STREET, PHILADELPHIA, PA. PHONE: 526-1111
PROJECT NO. 4-2-11 DRAWING NO. 4-2-11-100	TITLE: FIRE ALARM RISER DIAGRAMS DATE: 11-1-50	U.S. ARMY ENGINEER DISTRICT, PHILADELPHIA OFFICE OF THE DISTRICT ENGINEER 2100 MARKET STREET, PHILADELPHIA, PA. PHONE: 526-1111
DELIVERED TO: U.S. ARMY ENGINEER DISTRICT, PHILADELPHIA DATE: 11-1-50	U.S. ARMY ENGINEER DISTRICT, PHILADELPHIA OFFICE OF THE DISTRICT ENGINEER 2100 MARKET STREET, PHILADELPHIA, PA. PHONE: 526-1111	U.S. ARMY ENGINEER DISTRICT, PHILADELPHIA OFFICE OF THE DISTRICT ENGINEER 2100 MARKET STREET, PHILADELPHIA, PA. PHONE: 526-1111

7325