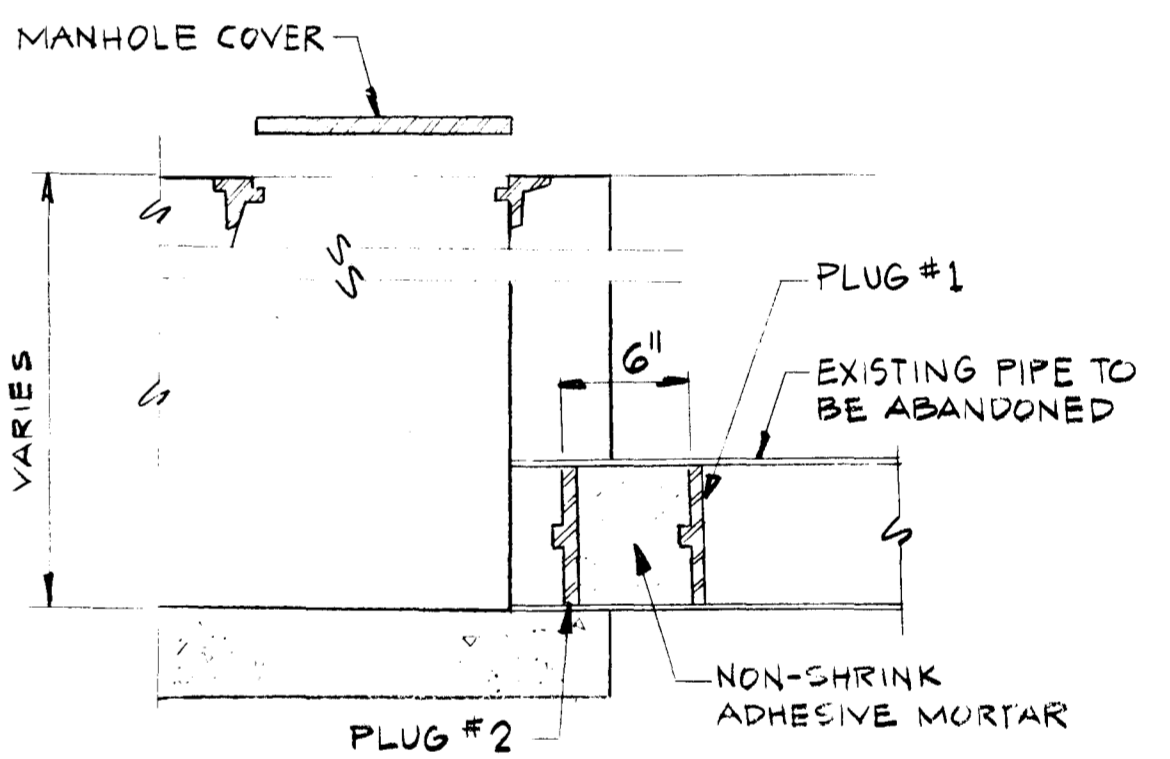


(SEE DETAIL)



SECTION AT ABANDONED PIPE
NTS

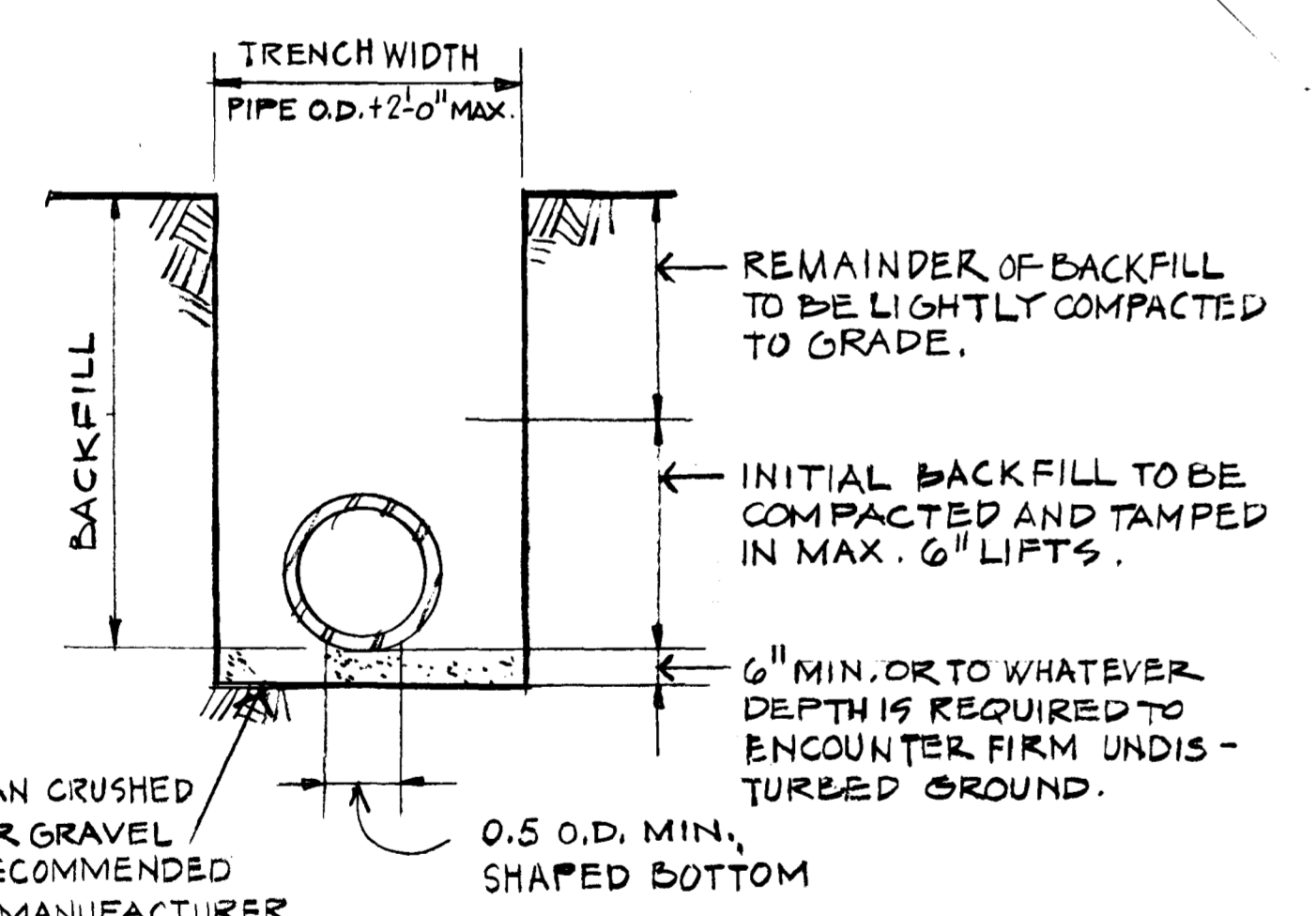
1. CLEAN PIPE TO BE ABANDONED.
2. INSTALL PLUG #1 AND TIGHTEN.
3. PLACE NON-SHRINK ADHESIVE MORTAR TO COMPLETELY FILL PIPE AS SHOWN.
4. RAM PLUG #2 INTO MORTAR TO CAUSE MORTAR TO COMPLETELY FILL ALL VOIDS. TIGHTEN PLUG #2.

WORK LEGEND

- NEW LINE, ○ NEW MANHOLE (TYPICAL 9)
- ||||| ABANDON LINE
- ==== REPLACE LINE
- ⊙ MANHOLE - SEE SPECIFICATION TABLE #1 FOR MANHOLE REHABILITATION WORK

REFER TO GENERAL SITE MAP FOR GENERAL SITE INFORMATION

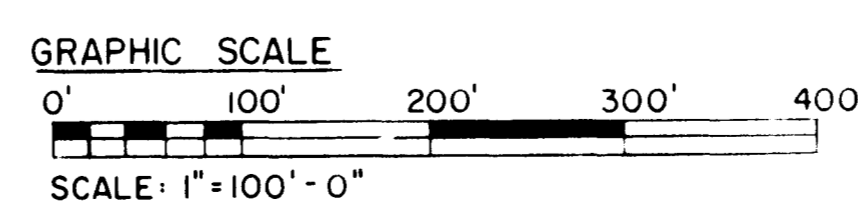
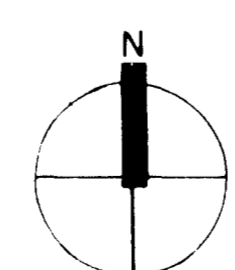
UTILITY LEGEND	
— E	ELECTRICAL LINE (UG-UNDERGND./OVERHEAD)
— G	GAS LINE
— S	SANITARY SEWER LINE
— ST	STORM DRAINAGE LINE
— T	TELEPHONE LINE
— W	WATER LINE
•	POLE, POLE W/LIGHT
⊙	MANHOLE
○	VENT (UNDERGROUND TANK)
—	FIRE HYDRANT
—	SIGNS
—	BOLLARDS
—	UTILITY EASEMENT
—	PROPERTY LINE
—	MATCH LINE
—	CENTER LINE
—	VALVES
—	ANCHOR WIRE
—	CHAIN FENCE
—	W/CHAIN FENCE
—	IRON PICKET FENCE



SECTIONAL ELEVATION OF MINIMUM STANDARD PIPE BEDDING
NO SCALE

NOTES:

1. THE CONTRACTOR SHALL BE RESPONSIBLE FOR OBTAINING ALL REQUIRED PERMITS AND ALSO COMPLIANCE WITH ALL THE REQUIREMENTS OF THE STATE OF NEW JERSEY CONSTRUCTION SAFETY CODE AS WELL AS THOSE REQUIREMENTS AS OUTLINED IN THE SPECIFICATIONS.
2. THE CONTRACTOR SHALL NOTE THAT THE EXISTING PIPELINES MAY NOT BE ABANDONED UNTIL THE NEW PIPELINES ARE INSTALLED, TESTED AND THE FLOW THEN DIVERTED.
- * 3. REPLACE LINES AT EXISTING INVERTS AND ELEVATIONS TO THE GREATEST EXTENT POSSIBLE, BUT IN EVERY CASE SLOPE SHALL BE POSITIVE TOWARD MANHOLE COUS.
4. ABANDONED LINES SHALL BE PLUGGED AT THE NEAREST MANHOLE AS SHOWN. ABANDONED MANHOLES SHALL HAVE FRAME AND COVER REMOVED, THEN BE FILLED WITH EARTH, COMPACTED, AND SEEDED OR PAVED AS APPROPRIATE. FRAMES AND COVERS MAY BE REUSED IF THEY MEET THE SPECIFICATIONS.



NT013_0135

DESCRIPTION		DATE	APPROVED
UNITED STATES ARMY TRAINING CENTER AND PORT OF DIRECTORATE OF ENGINEERING AND HOUSING PORT ORL, NEW JERSEY 08640			
DRAWN	RF		
DESIGNED	BJ		
CHECKED			
BY and P BY			
BY and S BY	Sw		
UTL BY	Sw		
WORK APPROVED	MH		
RECOMMENDED	MSS PM		
APPROVED	Director of Engineering and Housing		
SANITARY SEWER IMPROVEMENTS			
SIEVERS-SANDBERG USARC			
PEDRICKTOWN, NEW JERSEY			
SITE PLAN AND DETAILS			
SCALE:	1"=100'-0"	DRAWING NUMBER:	88-333-02
DATE:	01/30/89	PROJECT:	GM-00333-8J
		PAGE 2 OF 5	