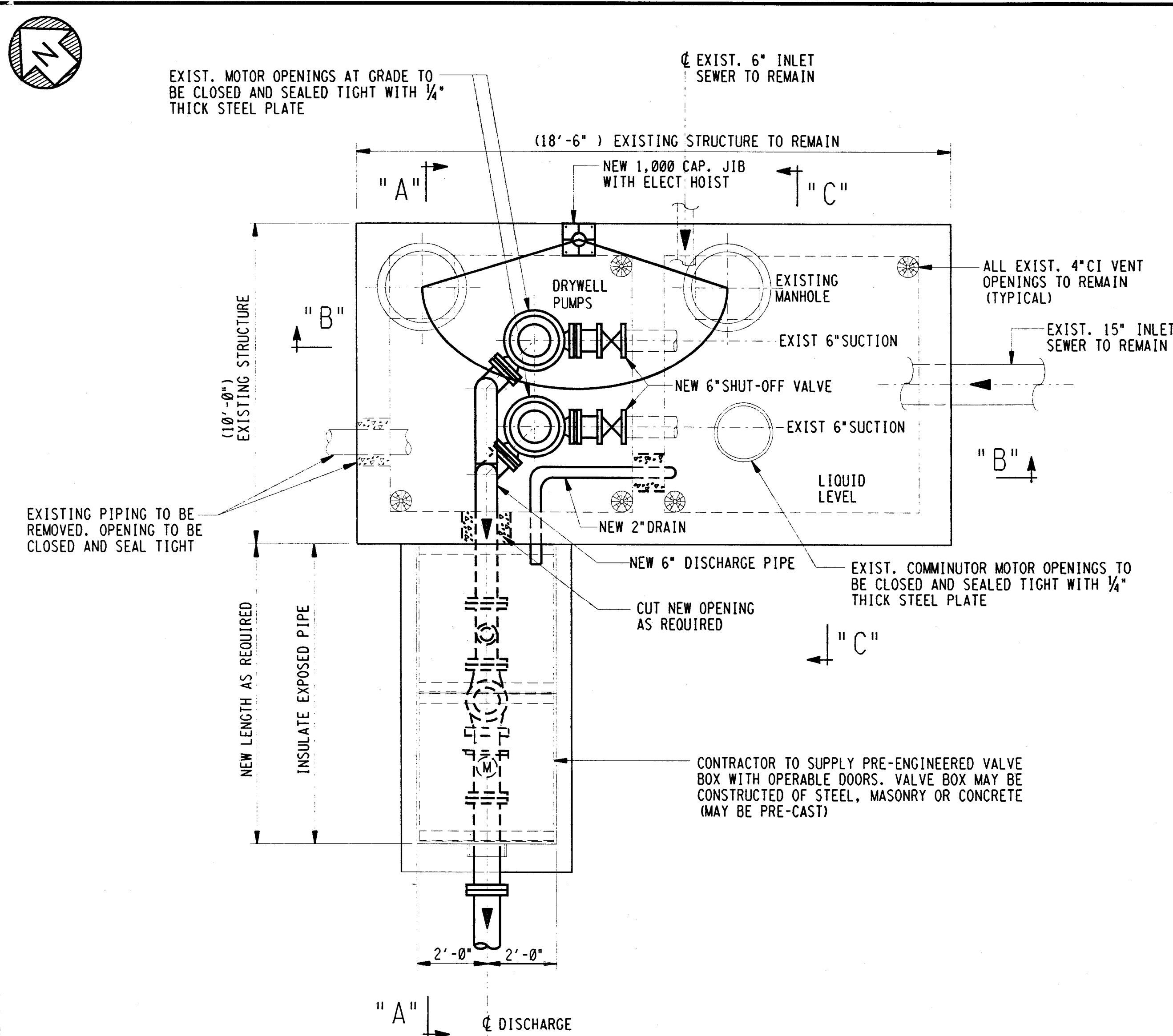
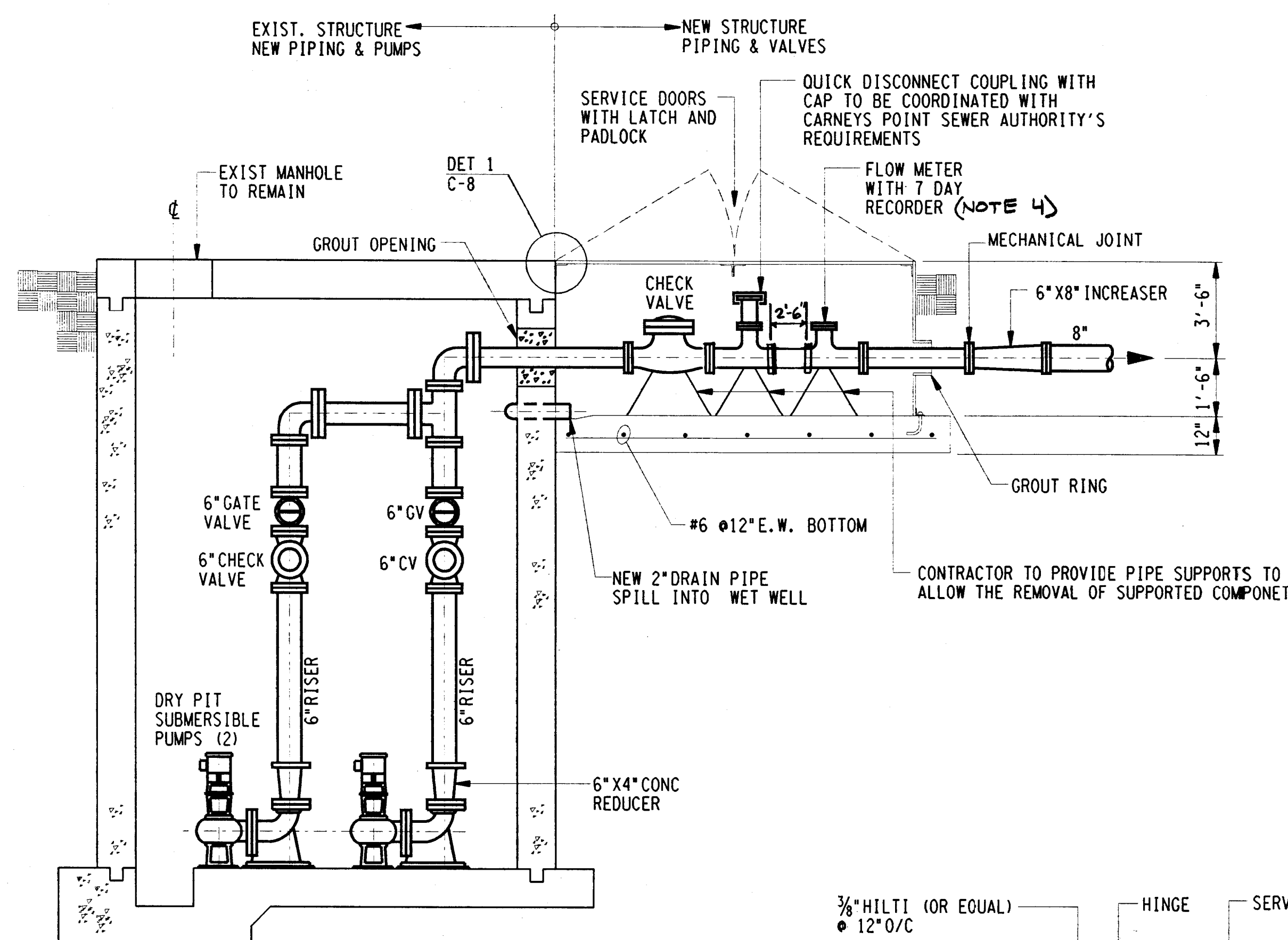


GENERAL NOTES

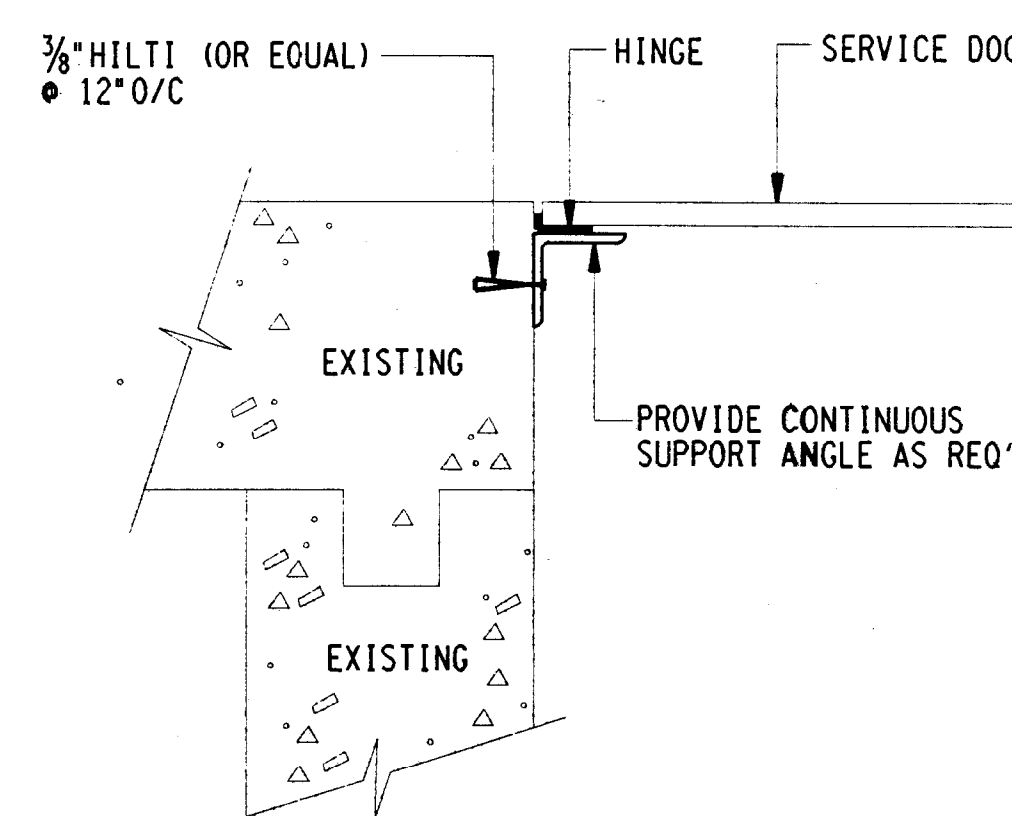
1. CONTRACTOR SHALL VERIFY ALL DIMENSIONS OF EXISTING STRUCTURE BEFORE PURCHASING EQUIPMENT & FABRICATION OF NEW PIPING.
2. CONTRACTOR SHALL COORDINATE THE NEW PUMPS AND PIPING WITH THE REQUIREMENTS OF THIS DRAWING, SPECIFICATIONS AND EXISTING STRUCTURE.
3. THE CONTRACTOR MUST VISIT THE SITE AND FAMILIARIZE HIMSELF WITH THE TYPE OF EXISTING SYSTEM AND STRUCTURE INVOLVED IN DEMOLITION AND NEW INSTALLATION. NO OMISSION ON THE PART OF THE CONTRACTOR SHALL BE JUSTIFICATION FOR ADDITIONAL COMPENSATION.
4. CONTRACTOR TO PROVIDE REQUIRED LENGTH OF STRAIGHT PIPE UPSTREAM OF METER (NOT LESS THAN 2'-0").



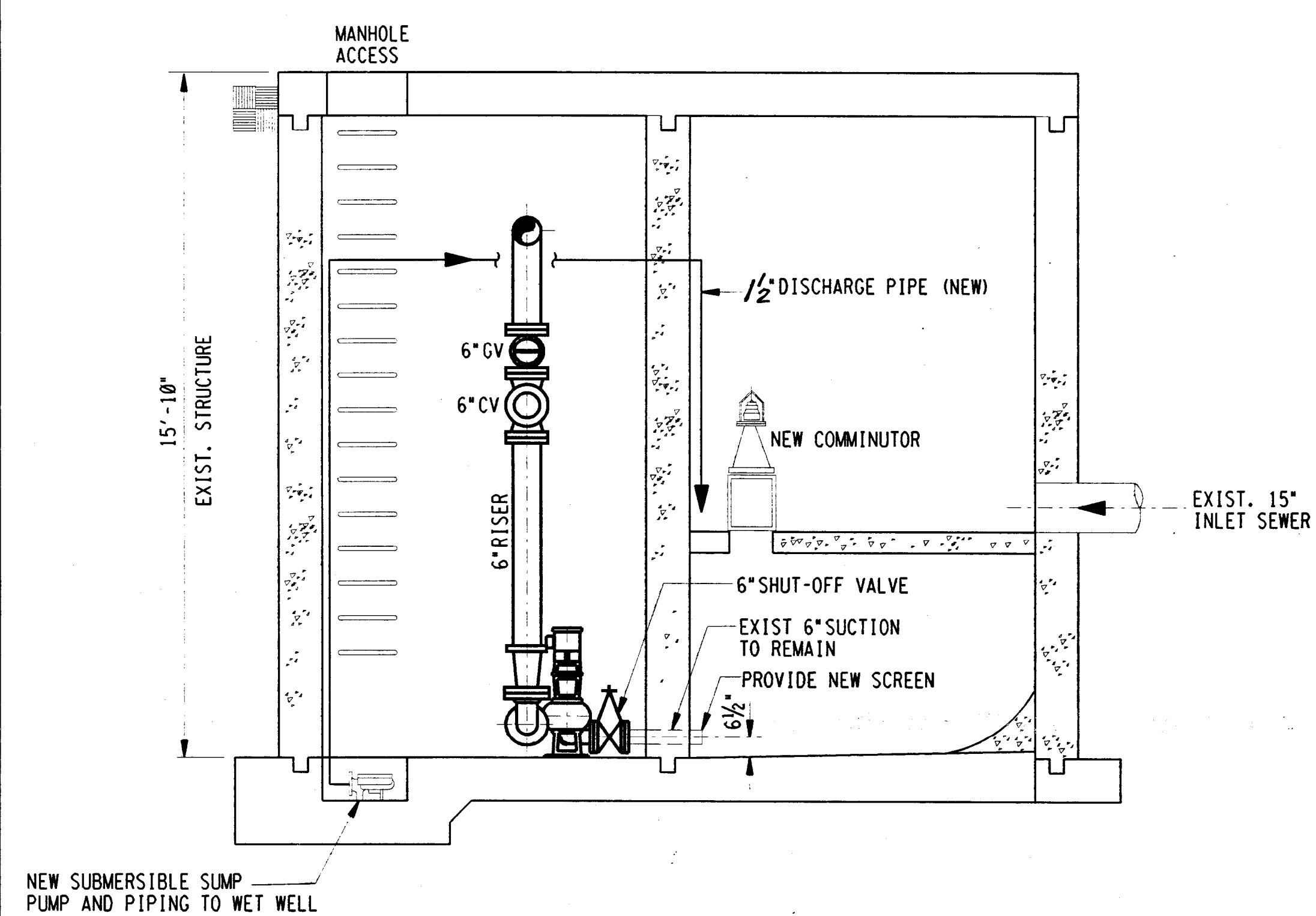
PLAN - LIFT STATION
SCALE: 3/8" = 1'-0"



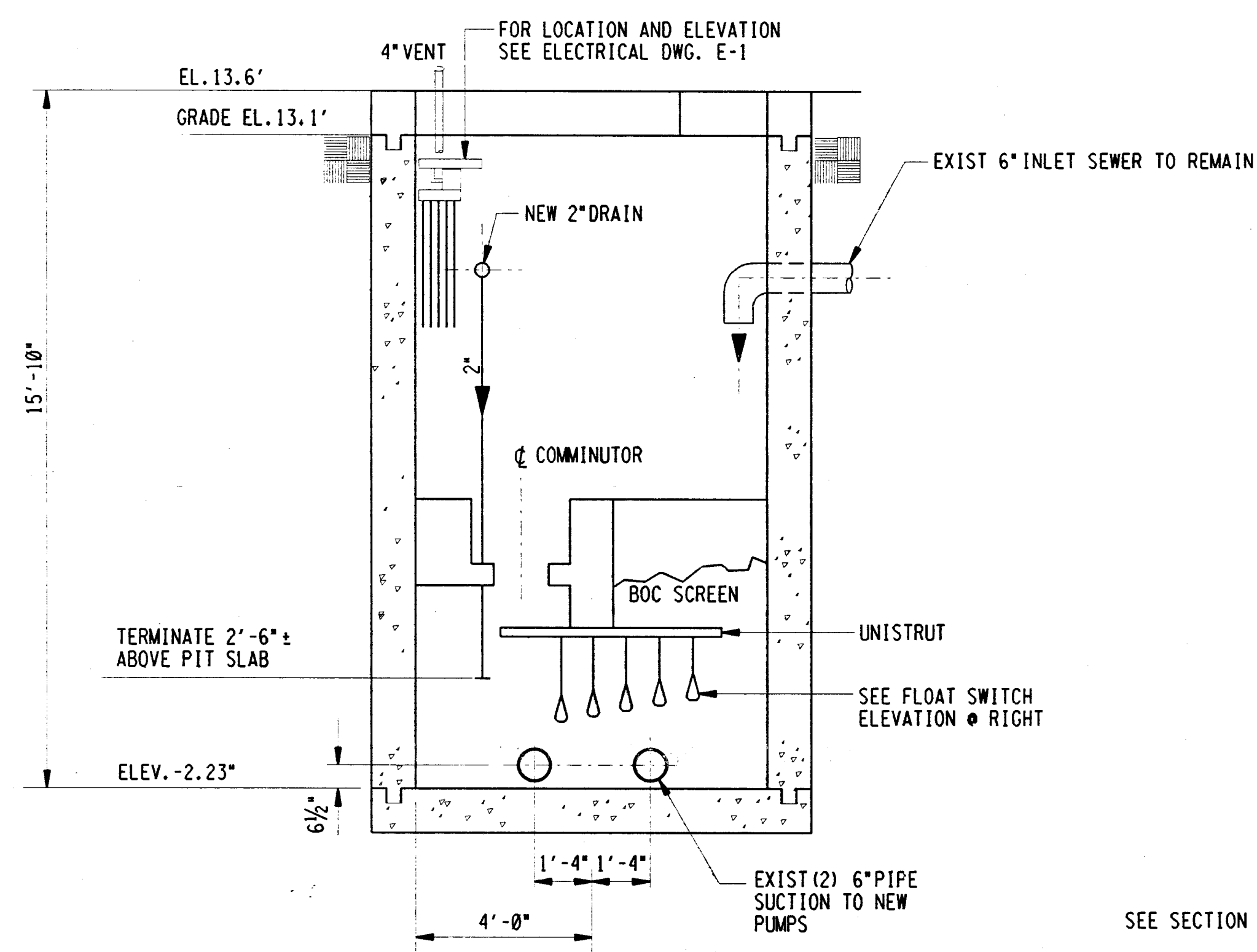
SECTION "A-A"
NTS



DETAIL 1
NTS C-8

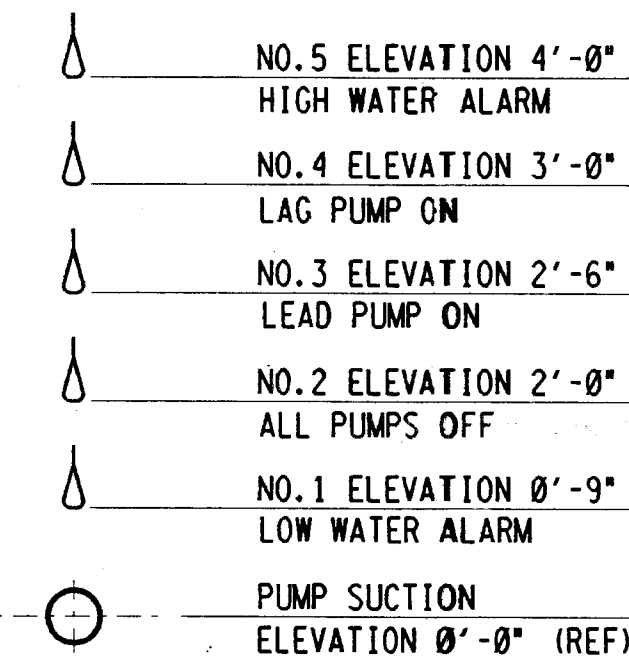


SECTION "B-B"
NTS



SECTION "C-C"
NTS

NOTE: SEE DRAWING E-1 FOR SEQUENCE OF OPERATION AND FLOAT CONTROLS.



FLOAT SWITCH ELEVATION
NTS

SYMBOL		DESCRIPTION	DATE	APPROVED
		REVISIONS		
FOSTER WHEELER USA CORPORATION PERRYVILLE CORPORATE PARK, CLINTON, N.J.		UNITED STATES ARMY GARRISON FORT DIX DIRECTORATE OF PUBLIC WORKS FORT DIX, NEW JERSEY 08640		
DRAWN	TT	NEW WASTEWATER LIFT STATION AND FORCED MAIN SIEVERS-SANDBERG US ARMY RESERVE CENTER PEDRICKTOWN, NEW JERSEY		
DESIGNED	EN			
CHECKED	JCM			
FP&P DIV				
ENV DIV	USING AGENCY			
O & M DIV	DOIM	LIFT STATION MODIFICATIONS		
RECOMMENDED:	CHIEF ENGINEERING PLANS & SERVICES	SCALE:	AS NOTED	DRAWING NUMBER
APPROVED:		DATE:	OCTOBER 25, 1996	C-8
REGIONAL DIRECTORATE OF PUBLIC WORKS		PR. NR:	GM-00036-5P	SHEET 17 OF 18

13-05-37389

C:\31389\31389-0124.dwg
 13-NOV-96
 T:\202023