

# **Appendix J: Historic Sanborn Maps, 1900 and 1950**

This page intentionally left blank.

PELHAM ST.

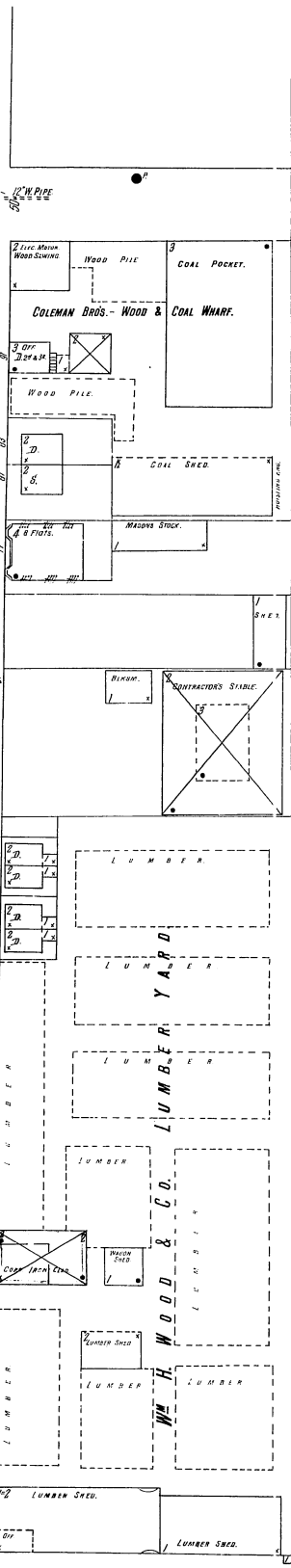
PIONEER ST.

30

PIONEER AV.

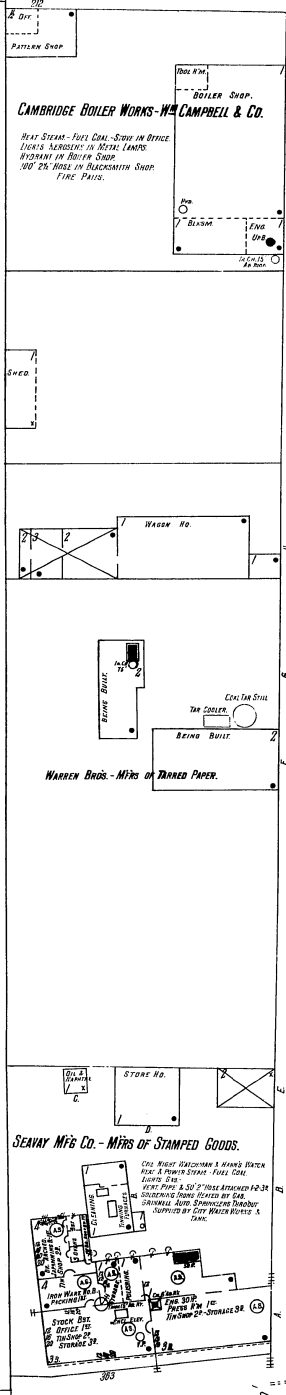
KENDALL SQ.

BROADWAY



24

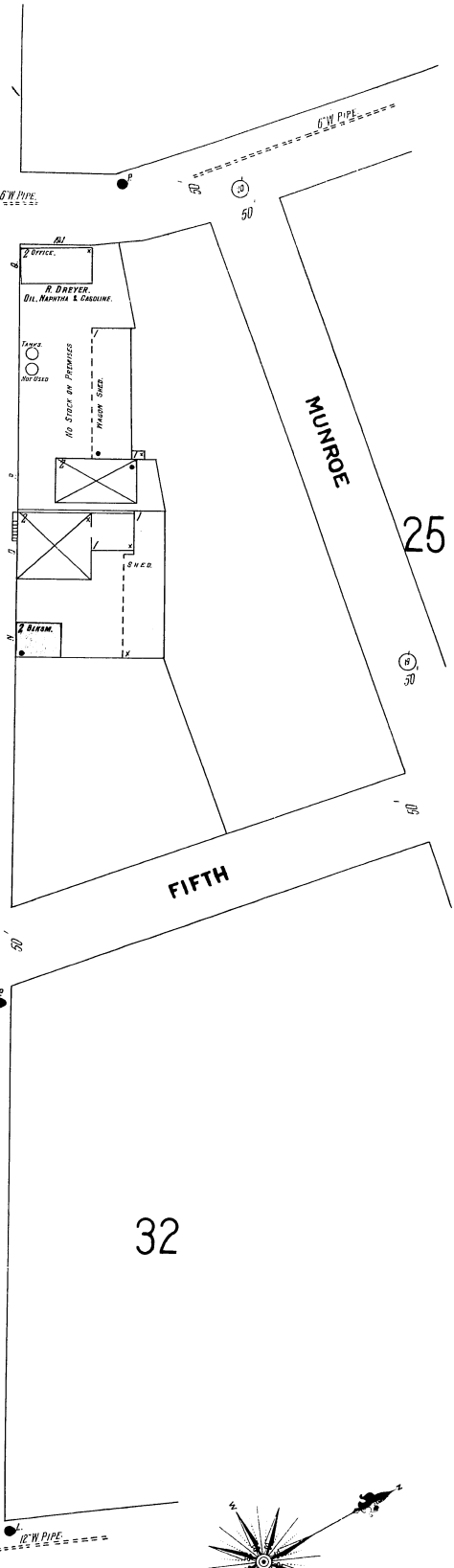
SIXTH



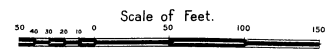
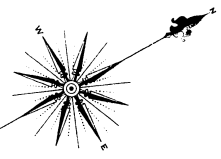
THIRD

32

POTTER



32





JOSEPH I RYERSON & SON, INC.  
METAL WORKING  
MUFFLE RINA  
WALWORTH, PUMP, STEEL, PUMPS &  
CONCRETE, STEEL, PIPE, STEAM HOOD,  
LUMBER, CRAN PATENT

28

29

BINNEY

MUNROE

POTTER

**RUSTIN HASTINGS CO. INC.**  
METAL WORKING  
MATERIALS  
RUBBER SUPPLIES  
REWER DANIELS  
WINDING CO.  
LUBRICATED OIL W. HO.  
WOOD

**JOSEPH I RYERSON & SON, INC.**  
METAL WORKING  
STEEL W. HO.  
STRUCTURE  
BRIDGE  
CONC. FIB.

**CAMBRIDGE GAS LIGHT CO.**  
FOR ACQUANT-SEE SHEET HERE  
IRON GASOMETER  
CAPAC. 4000000 GAL. FEET  
FUEL OIL TK  
15000

**PETROLEUM HEAT & POWER CO.**  
WALWORTH, NO. 1000, HEAT-STEAM-10  
FUEL OIL, CHEM. EXTG'S, SAND PALES  
TRUCK SHED  
20 STALLS

34

6TH ST.

**WARREN BROS. ROMBS CO.**  
MFG. ROAD PAVING MACHINES  
PLANT - CUTTING  
STEEL STOCK  
MACH. SHOP  
WOOD SHOP  
SAND & GRAVEL BIN

Broad Canal

**PHOTOSWITCH INC.**  
ASSEMBLING 1-2  
LOFTS  
MACHINERY MFG. & REPR.  
AUTO SERVICE  
TIRE SERVICE & FILLING STA.

BROADWAY

45

36

