



General Services Administration
Calais Ferry Point Land Port of Entry, Calais, Maine
Environmental Assessment
PUBLIC SCOPING MEETING HANDOUT



Summary

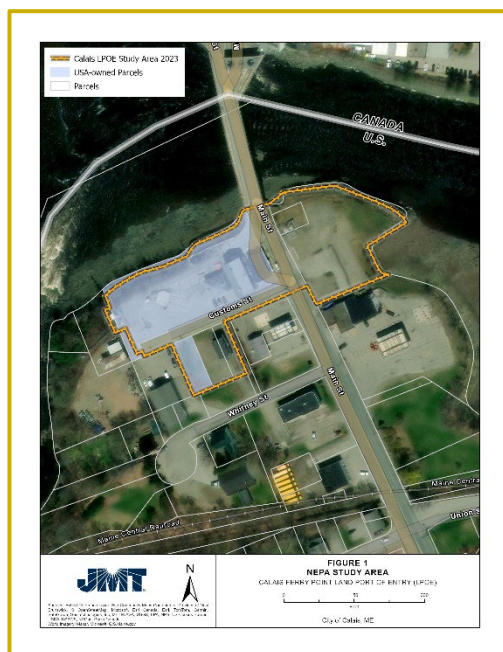
The U.S. General Services Administration (GSA) is proposing to modernize the Calais Ferry Point Land Port of Entry (LPOE) in Calais, Washington County, Maine. The proposed project would improve the operational efficiency, safety, and security for U.S. Customs and Border Protection (CBP) personnel and cross-border travelers at the LPOE. The existing facility can no longer adequately support the mission requirements of CBP. Specifically, the deficiencies at the LPOE fall into two broad categories: 1) limited capacity; and 2) the existing building's condition and available space allocations.

A Draft Environmental Assessment (EA) is being prepared in compliance with the National Environmental Policy Act (NEPA) of 1969, as amended (42 U.S. Code [U.S.C.] 4321), as implemented by Council on Environmental Quality (CEQ) regulations (40 Code of Federal Regulations [CFR] 1500–1508), and policies of the GSA as the lead federal agency. The Draft EA process provides steps and procedures to evaluate the potential natural and human environmental impacts for the proposed modernization and expansion of the Calais Ferry Point LPOE. Concurrently GSA will initiate consultation under the National Historic Preservation Act Section 106, along with NEPA compliance, as the current main building and the garage located on site are listed on the National Register of Historic Places (NRHP).

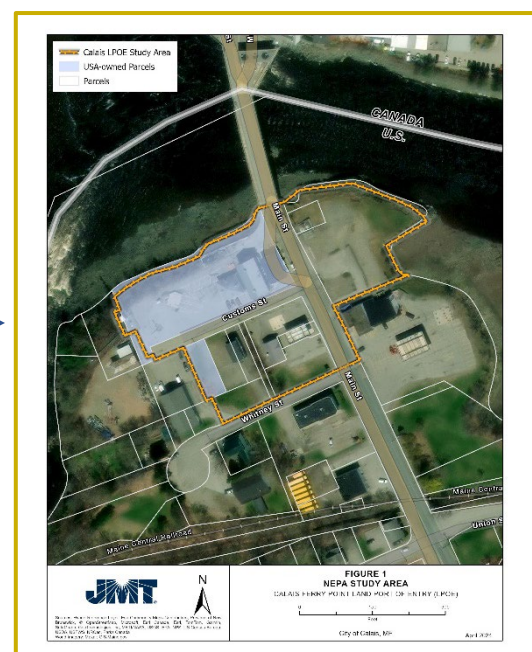
The GSA is providing an opportunity for the public and for local, state, or federal agencies to provide input and/or comment through scoping and public informational meetings concerning the preparation of the EA. The social, economic, and environmental considerations are evaluated and measured, as defined in the CEQ regulations, by their magnitude of impacts.

Since the initial Public Scoping Meeting in June 2023, the Study Area for the modernization efforts has expanded (see below). The updated Study Area now extends south to Whitney Street.

June 2023 Study Area



March 2024 Study Area



Further information about the project can be viewed at: <http://gsa.gov/calaisferrypoint>.



General Services Administration
 Calais Ferry Point Land Port of Entry, Calais, Maine
 Environmental Assessment
 PUBLIC SCOPING MEETING HANDOUT



Alternatives Considered

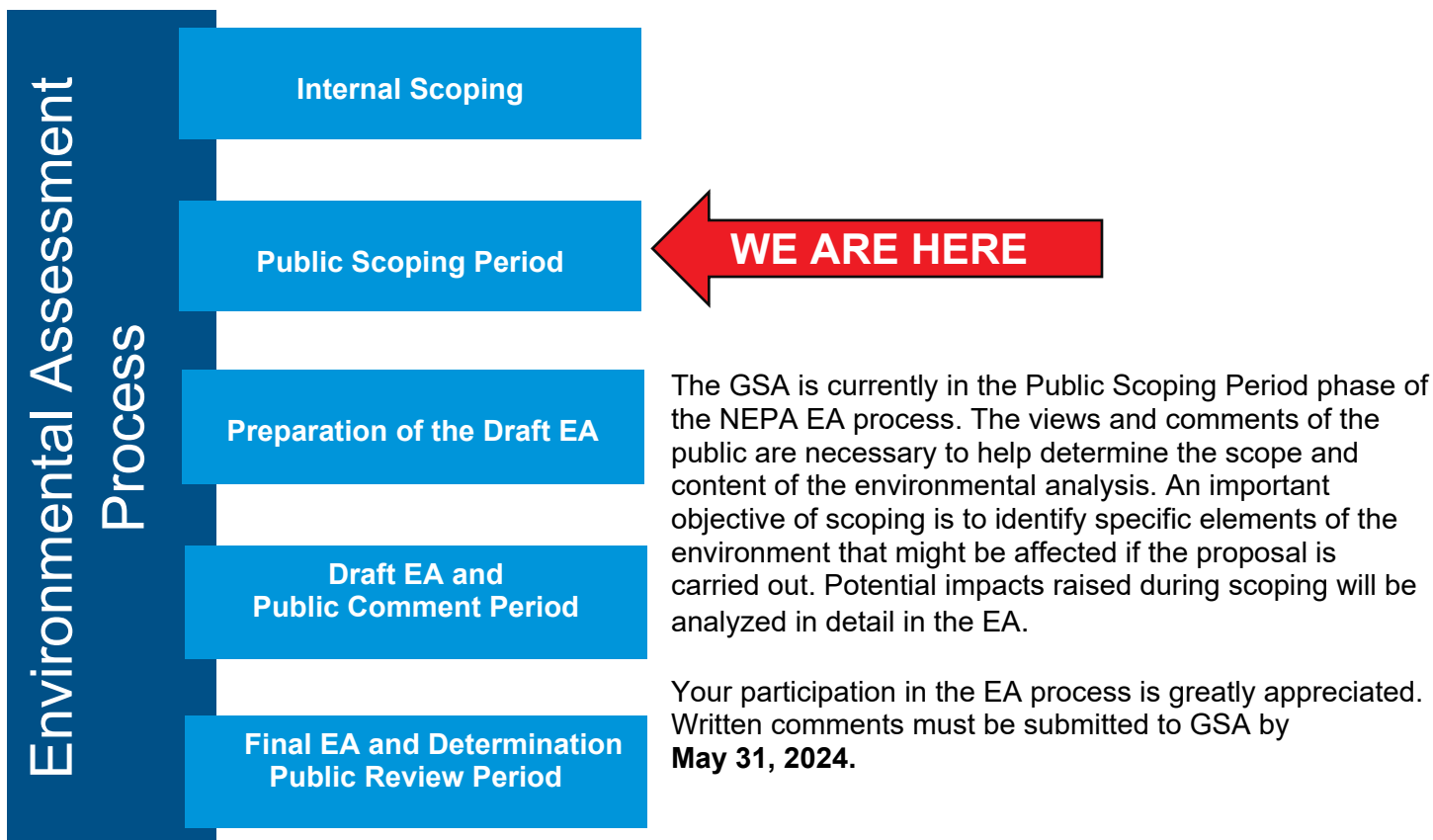
The EA will consider “action” alternatives and a “no action” alternative.

The action alternatives may include:

- Construction of a new garage; inspection canopies; inspection booths and lanes; additional parking; an impound lot; and outbound, inbound, and bypass lanes
- Acquisition of additional land
- Expansion of the existing main building listed on the NRHP
- Demolition of the existing garage listed on the NRHP

Under the no action alternative, CBP would continue to operate under existing conditions.

National Environmental Policy Act (NEPA) Process



Comments can be emailed to calaisferryport.lpoe@gsa.gov or mailed to:
 General Services Administration
 Attention: Li Wang, Project Manager
 T.P. O'Neill Federal Building
 10 Causeway Street, 11th Floor
 Boston, MA 02222



For further information, please contact Li Wang, Calais Ferry Point Project Manager, General Services Administration at (857) 246-6644 or calaisferryport.lpoe@gsa.gov.