



BRIDGE OF THE AMERICAS LAND PORT OF ENTRY MODERNIZATION PROJECT

Community Engagement Meeting

Chamizal National Memorial Theater
El Paso, Texas
April 4, 2023

Agenda

- Introduction
- Message from Congresswoman Escobar
- Project Overview
- Presentation of the Alternatives
- Community Comments

Message from Congresswoman Escobar

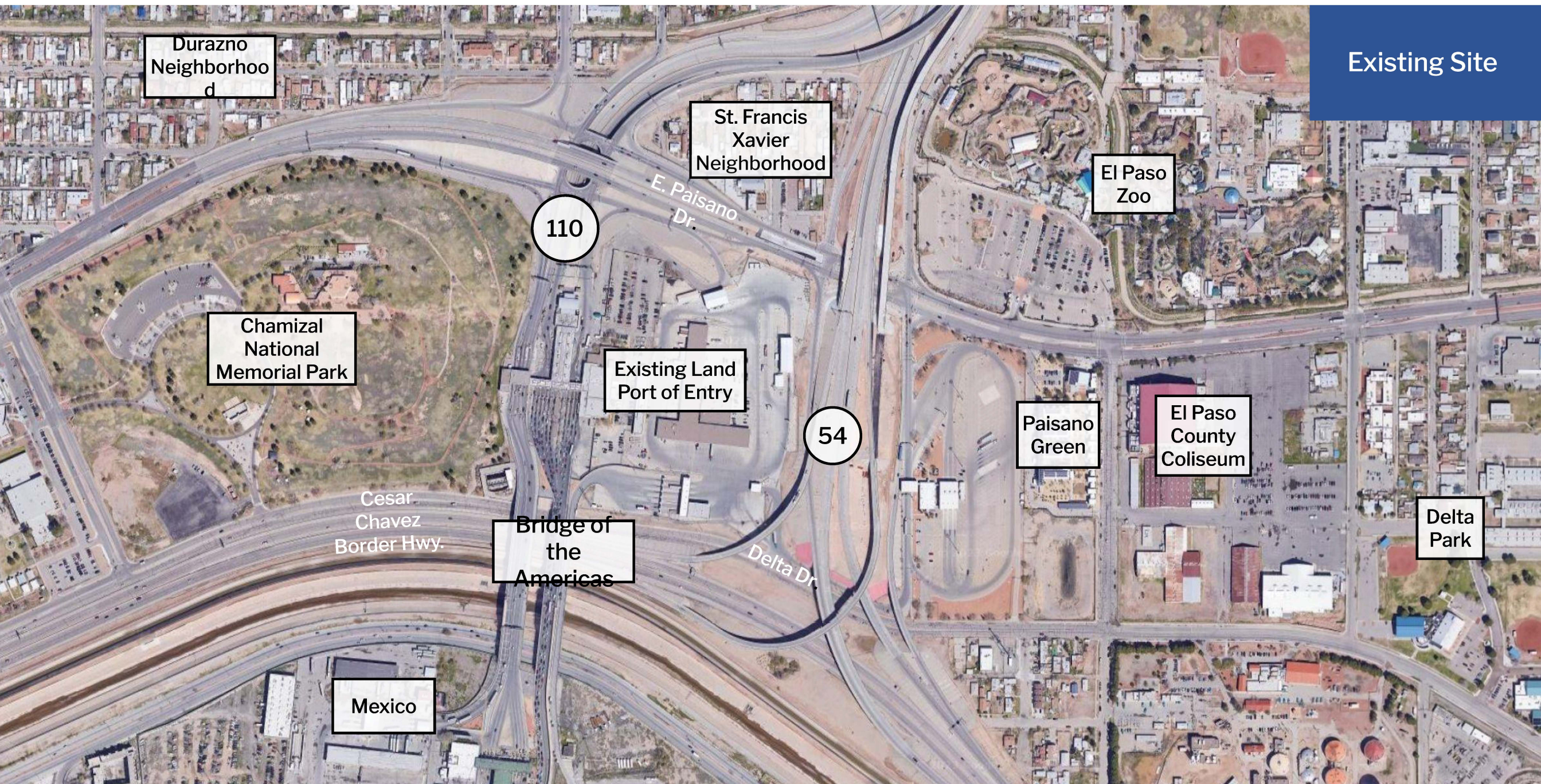


Bridge of the Americas Land Port of Entry Modernization
El Paso, Texas

COMMUNITY ENGAGEMENT MEETING
Chamizal National Memorial Theater | El Paso, Texas | April 4,
2023



Existing Site



Bridge of the Americas Land Port of Entry Modernization
El Paso, Texas

COMMUNITY ENGAGEMENT MEETING
Chamizal National Memorial Theater | El Paso, Texas | April 4,
2023



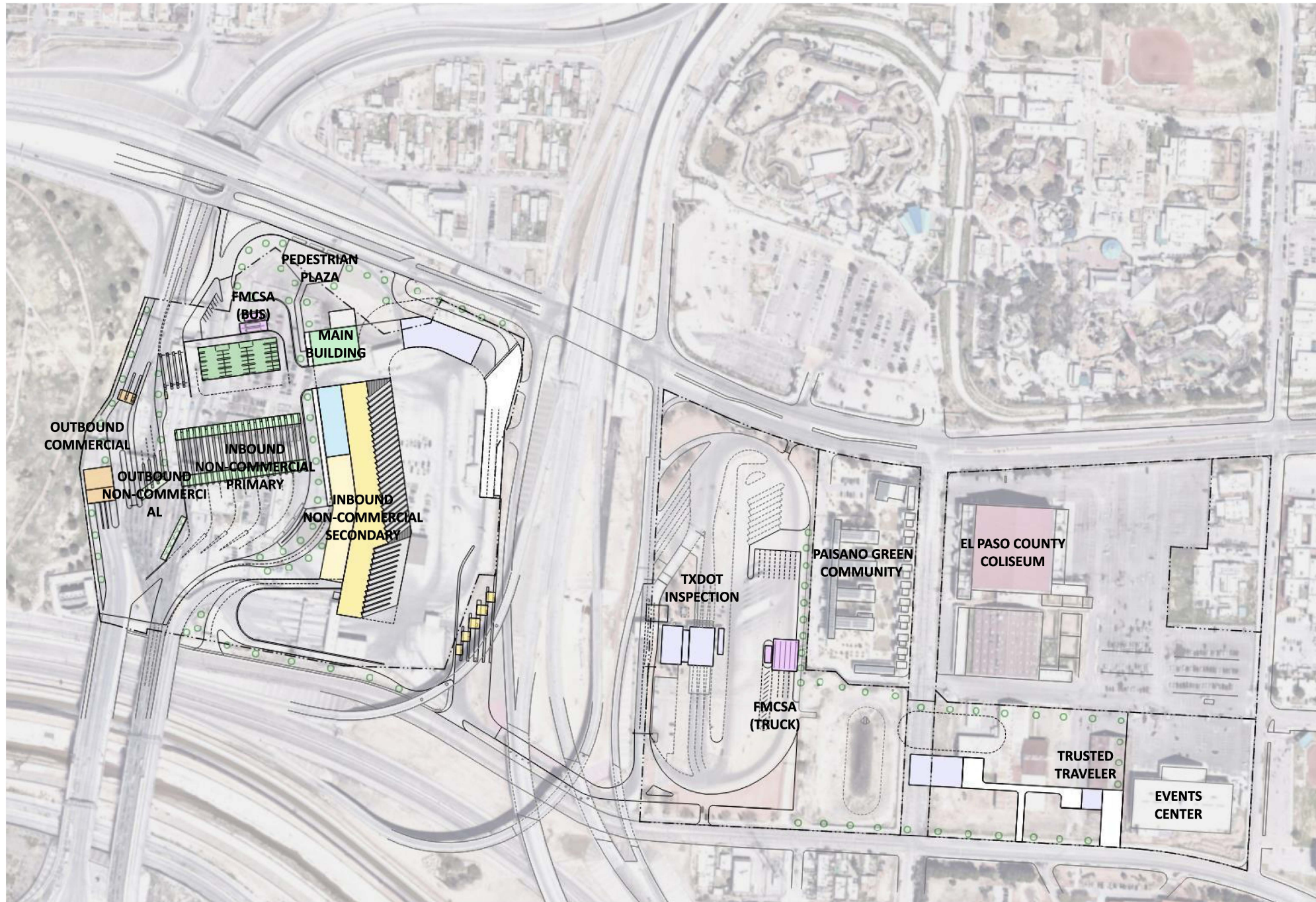
Alternative 1



Bridge of the Americas Land Port of Entry Modernization
El Paso, Texas

COMMUNITY ENGAGEMENT MEETING
Chamizal National Memorial Theater | El Paso, Texas | April 4,
2023





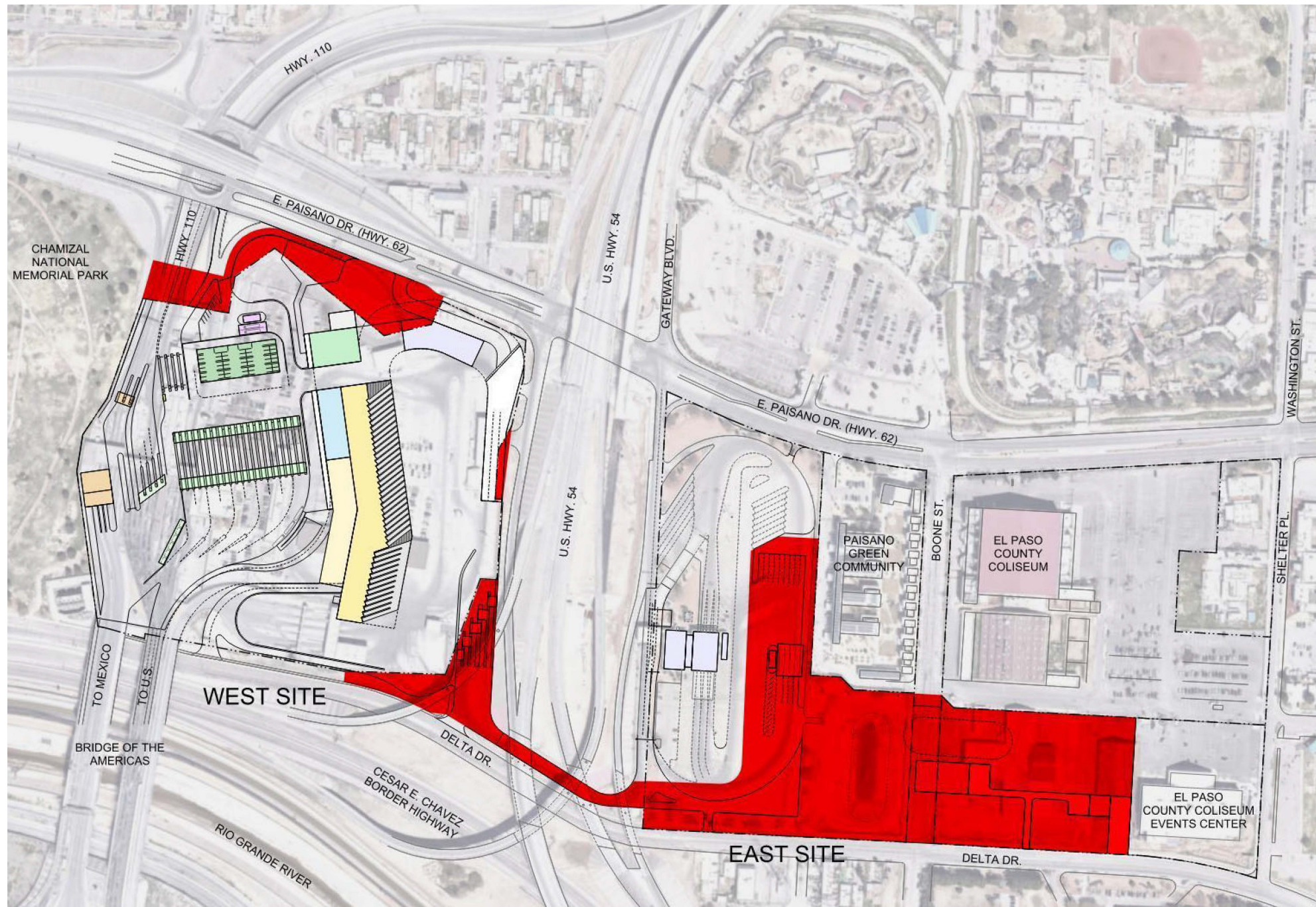
COMMUNITY ENGAGEMENT MEETING
 Chamizal National Memorial Theater | El Paso, Texas | April 4,
 2023



Bridge of the Americas Land Port of Entry Modernization
 El Paso, Texas



ALTERNATIVE 1 Land Use



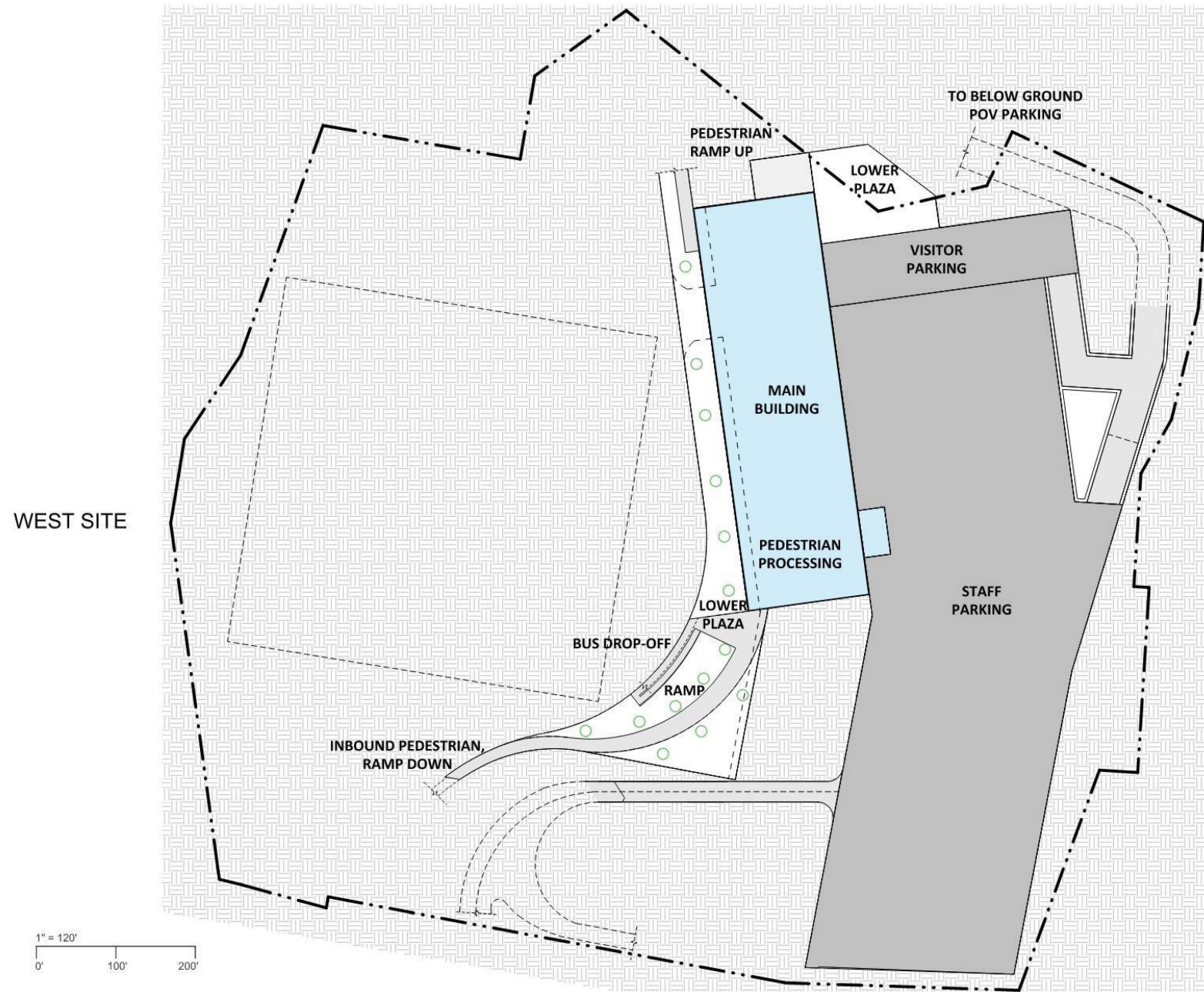
COMMUNITY ENGAGEMENT MEETING
Chamizal National Memorial Theater | El Paso, Texas | April 4,
2023



Bridge of the Americas Land Port of Entry Modernization
El Paso, Texas



ALTERNATIVE 1
Lower Level



COMMUNITY ENGAGEMENT MEETING
Chamizal National Memorial Theater | El Paso, Texas | April 4,
2023

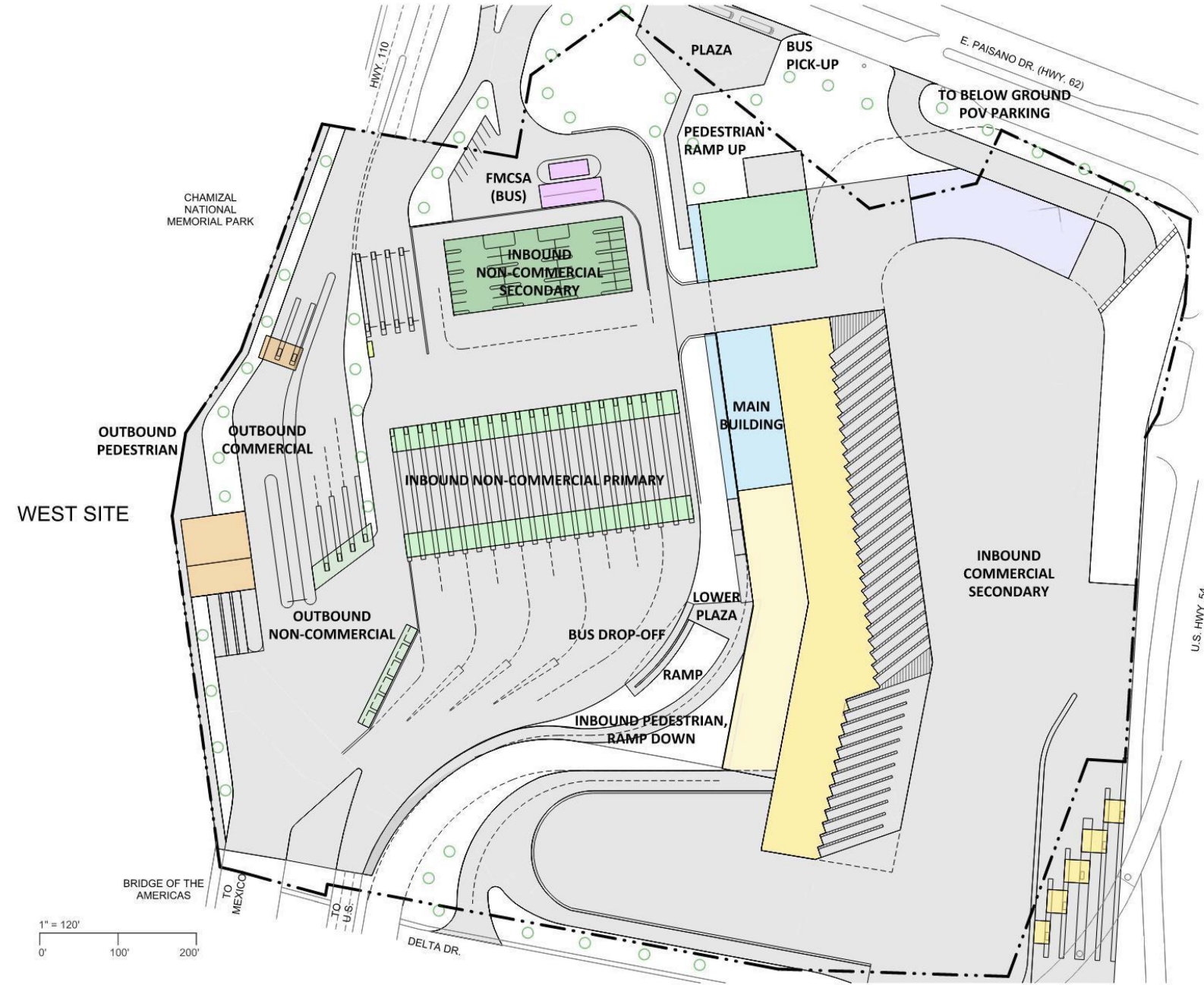


Bridge of the Americas Land Port of Entry Modernization
El Paso, Texas



ALTERNATIVE 1 Ground Level

• text



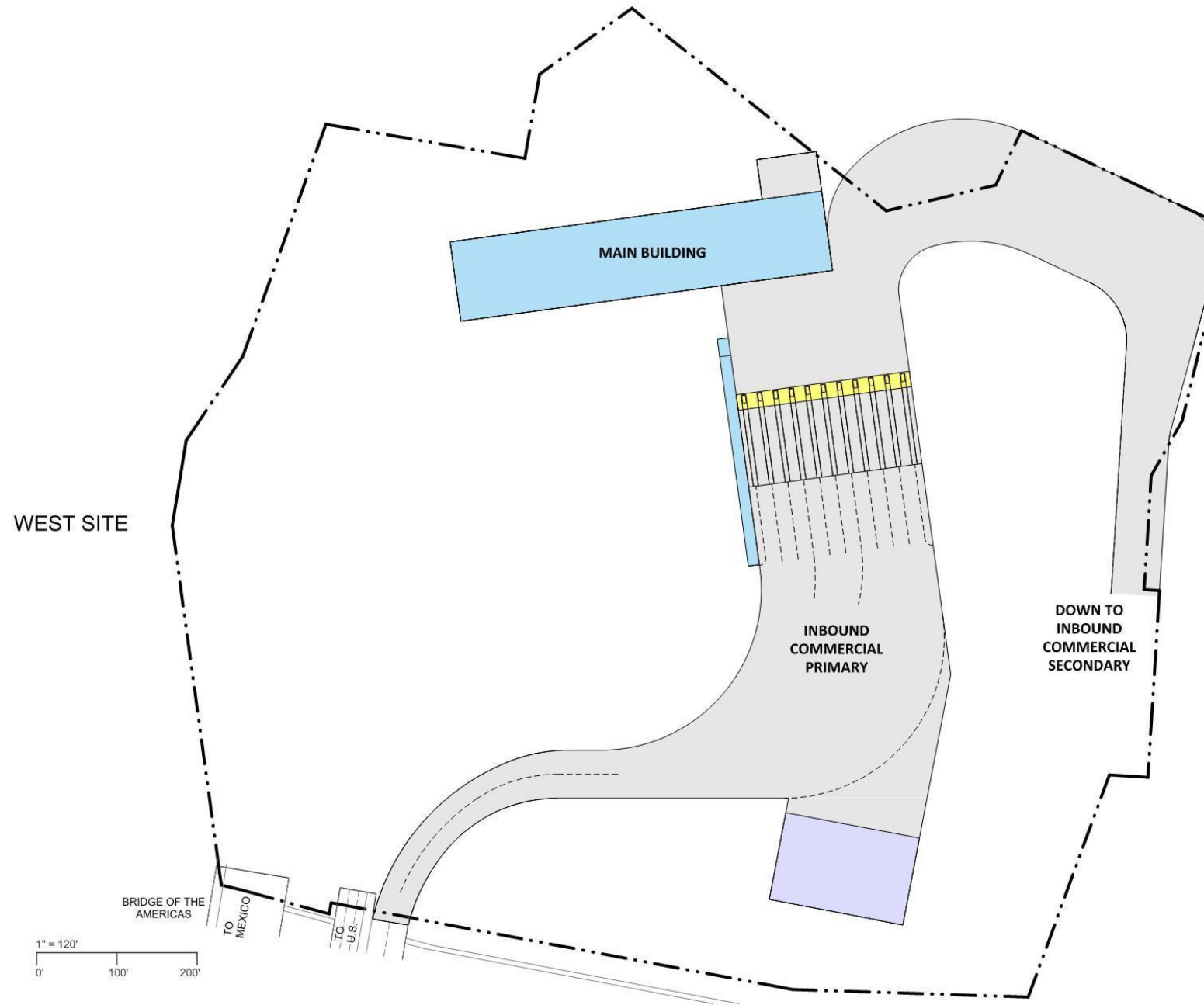
COMMUNITY ENGAGEMENT MEETING Chamizal National Memorial Theater | El Paso, Texas | April 4, 2023



Bridge of the Americas Land Port of Entry Modernization
El Paso, Texas



ALTERNATIVE 1
Upper Level



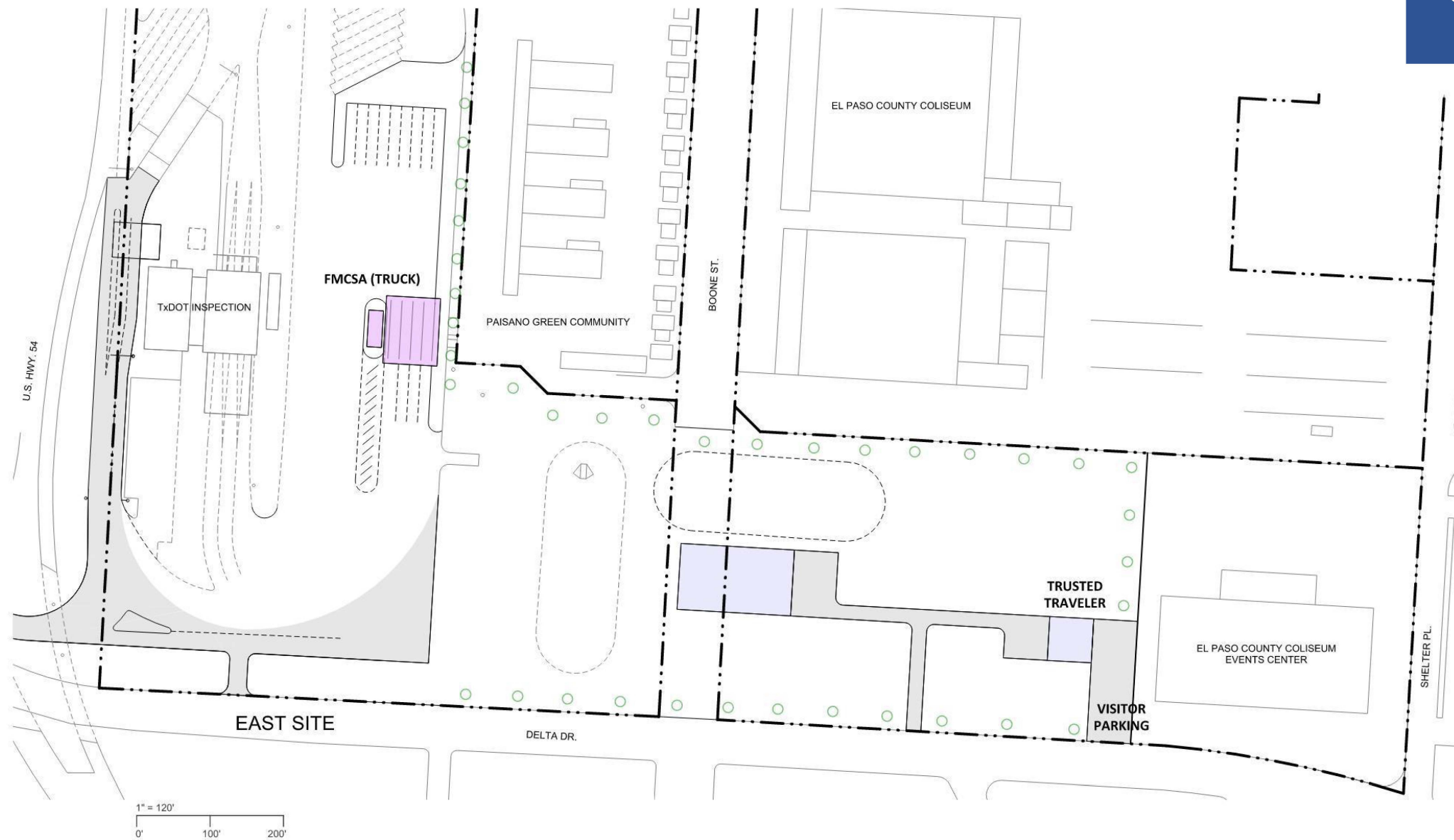
COMMUNITY ENGAGEMENT MEETING
Chamizal National Memorial Theater | El Paso, Texas | April 4,
2023



Bridge of the Americas Land Port of Entry Modernization
El Paso, Texas



ALTERNATIVE 1 Ground Level East



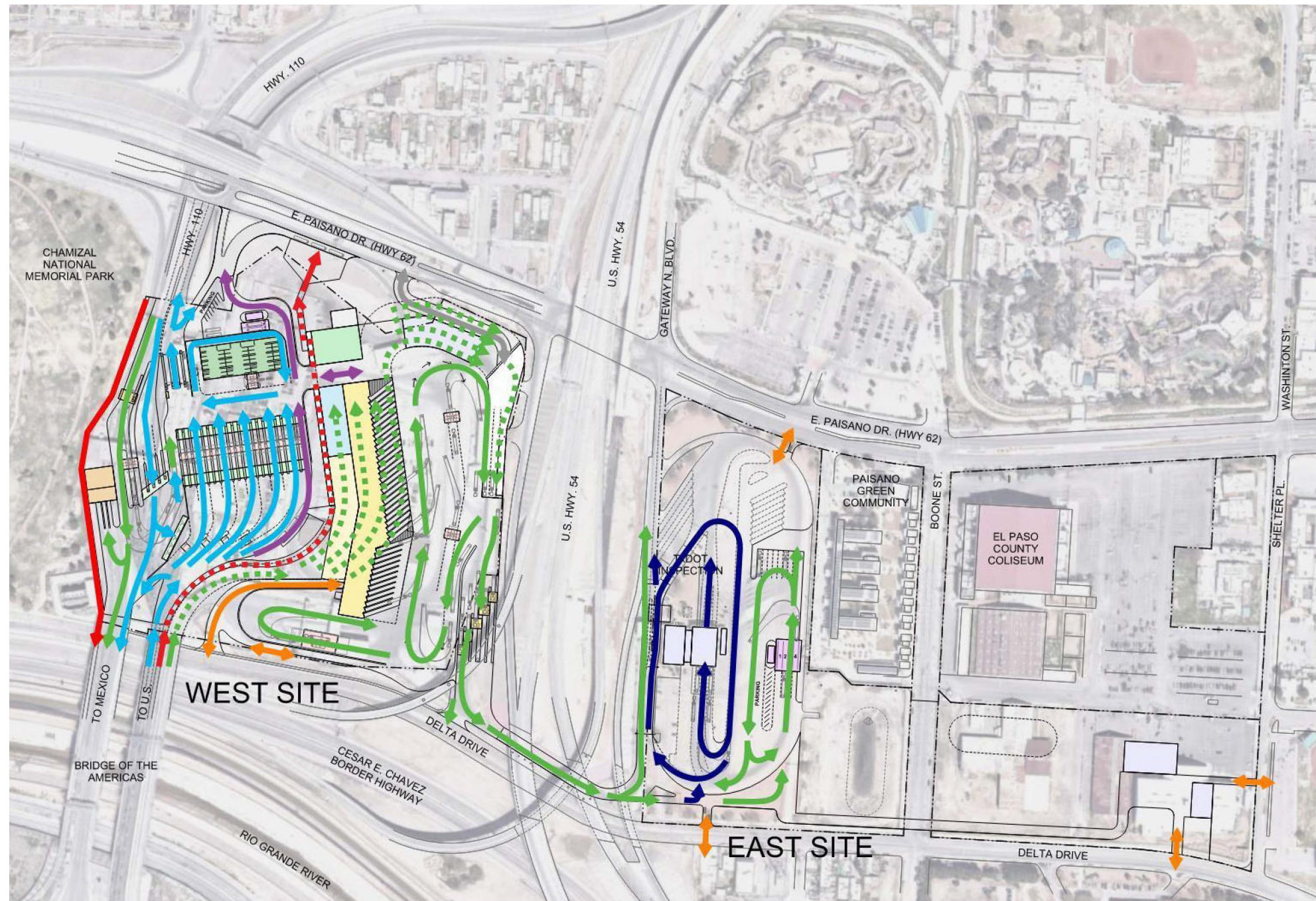
COMMUNITY ENGAGEMENT MEETING
Chamizal National Memorial Theater | El Paso, Texas | April 4,
2023



Bridge of the Americas Land Port of Entry Modernization
El Paso, Texas



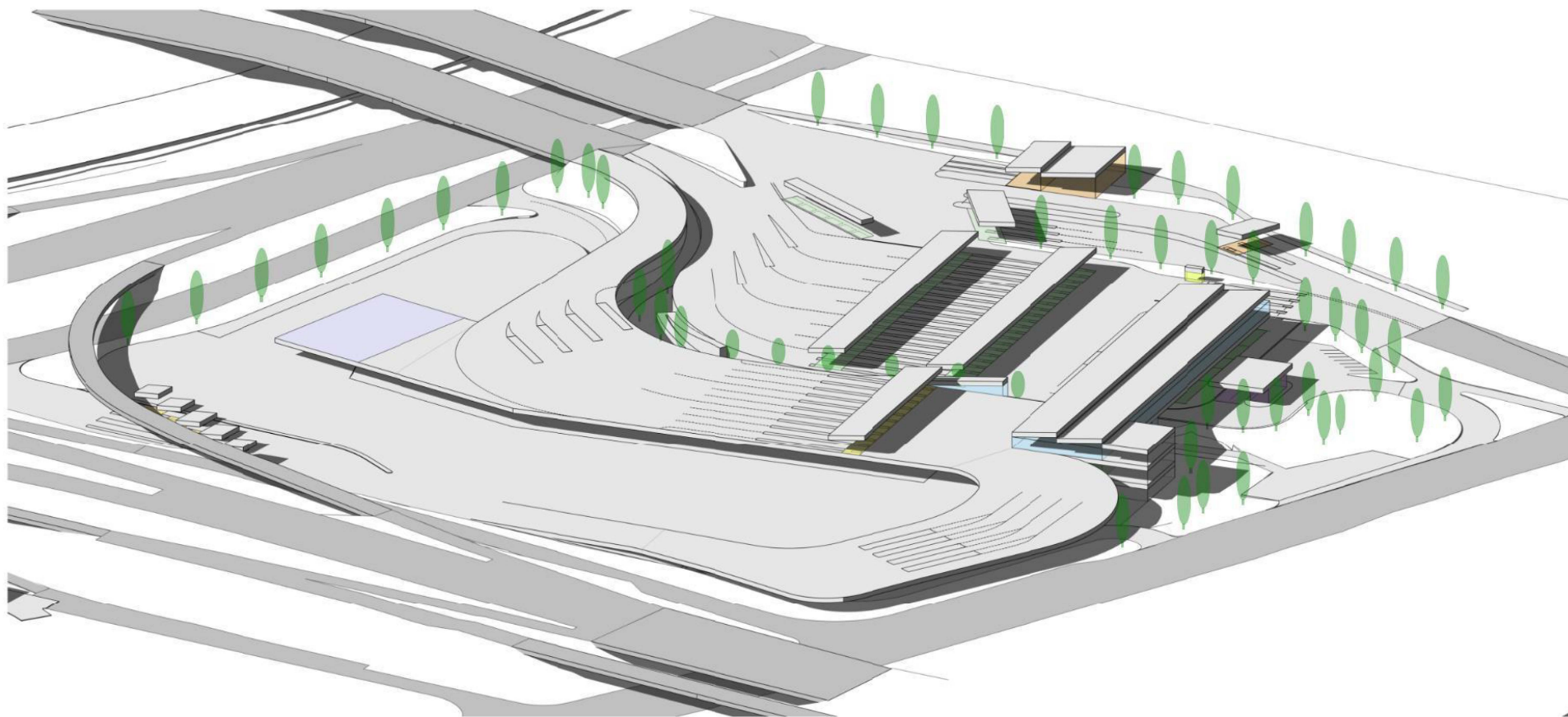
ALTERNATIVE 1 Traffic flow



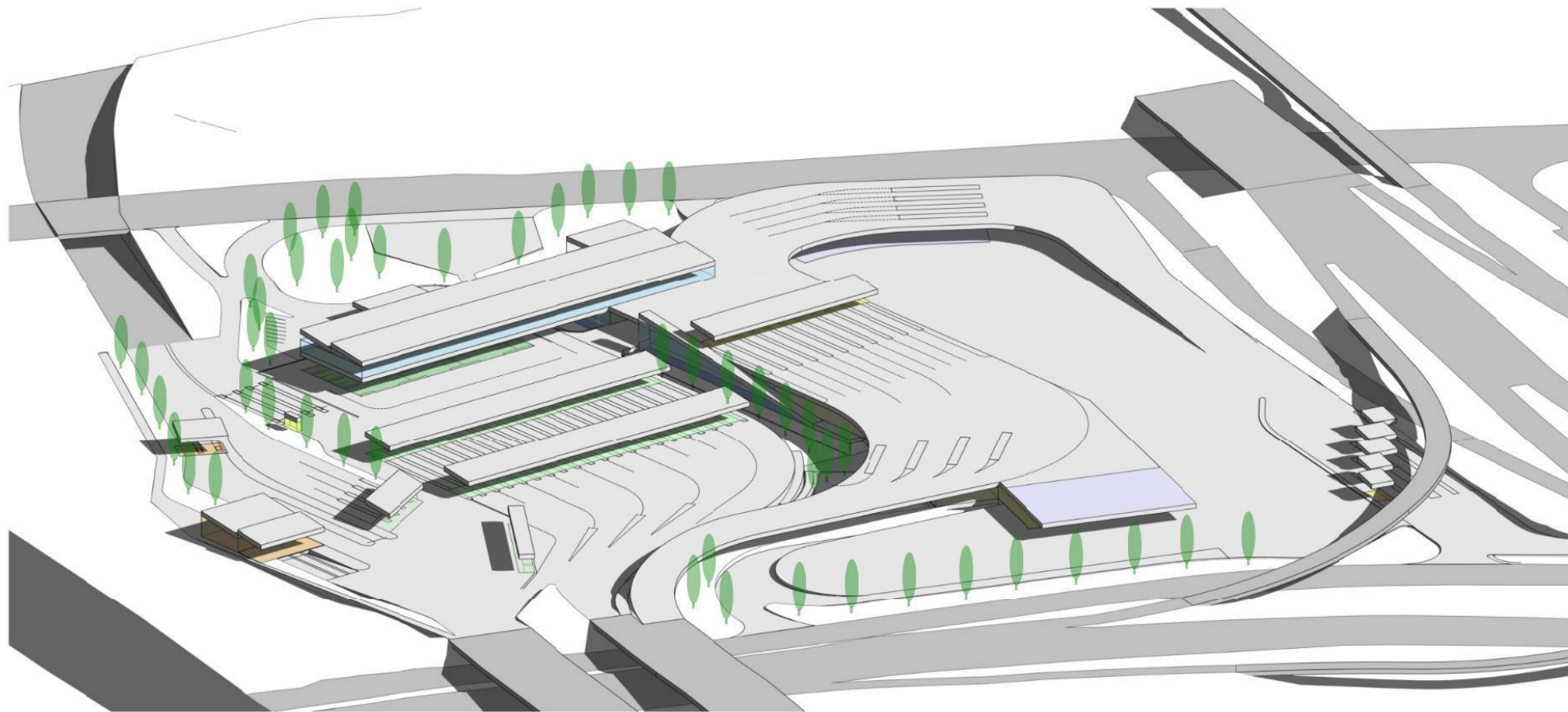
- TRAVEL PATHS**
- PEDESTRIAN
 - NON-COMMERCIAL
 - COMMERCIAL
 - BUS
 - VISITOR/SERVICE
 - STAFF
 - TxDOT

COMMUNITY ENGAGEMENT MEETING
 Chamizal National Memorial Theater | El Paso, Texas | April 4,
 2023

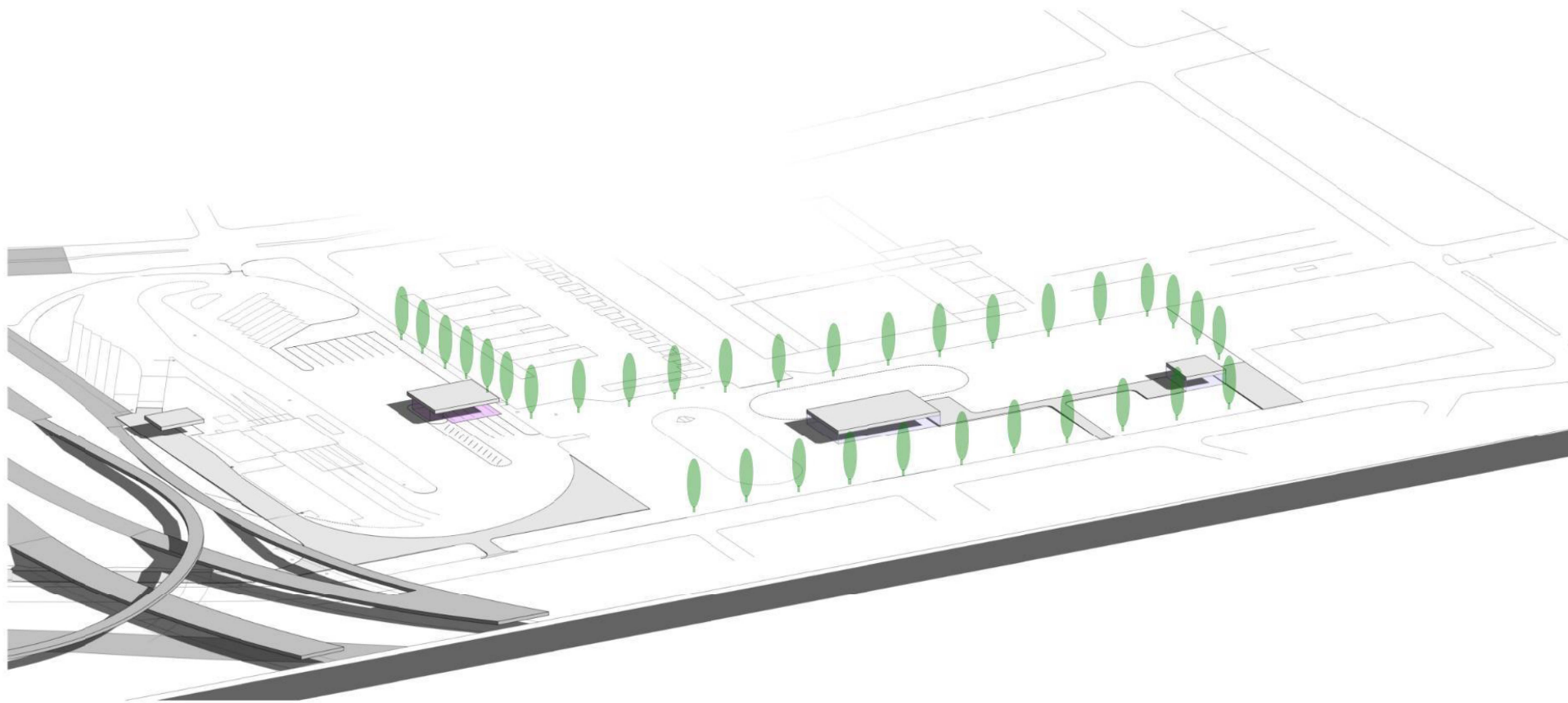
ALTERNATIVE 1
View to Bridge



ALTERNATIVE 1
View from
Bridge



ALTERNATIVE 1
View to East



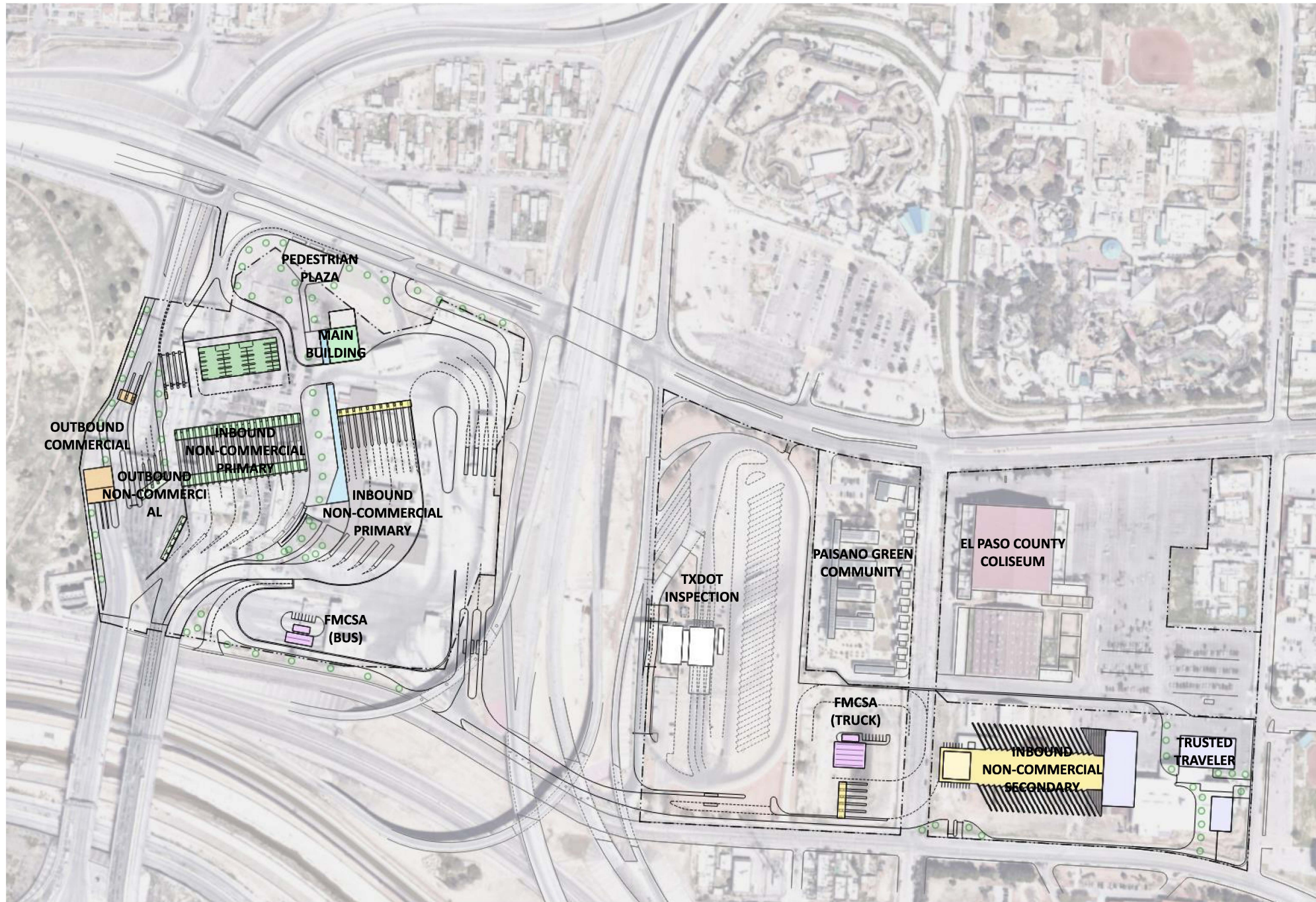
Alternative 2



Bridge of the Americas Land Port of Entry Modernization
El Paso, Texas

COMMUNITY ENGAGEMENT MEETING
Chamizal National Memorial Theater | El Paso, Texas | April 4,
2023





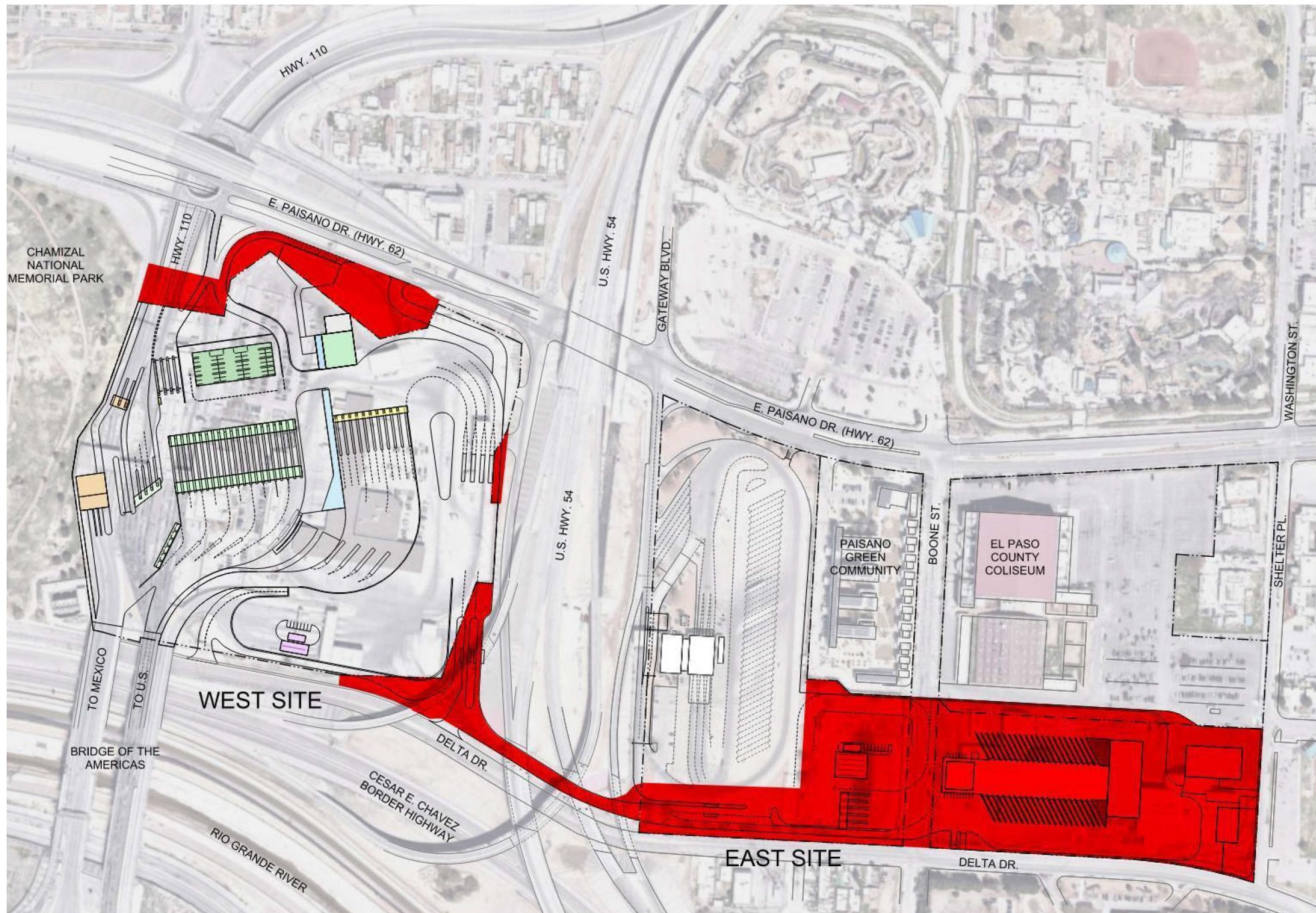
COMMUNITY ENGAGEMENT MEETING
 Chamizal National Memorial Theater | El Paso, Texas | April 4,
 2023



Bridge of the Americas Land Port of Entry Modernization
 El Paso, Texas



ALTERNATIVE 2 Land Use



COMMUNITY ENGAGEMENT MEETING
Chamizal National Memorial Theater | El Paso, Texas | April 4,
2023

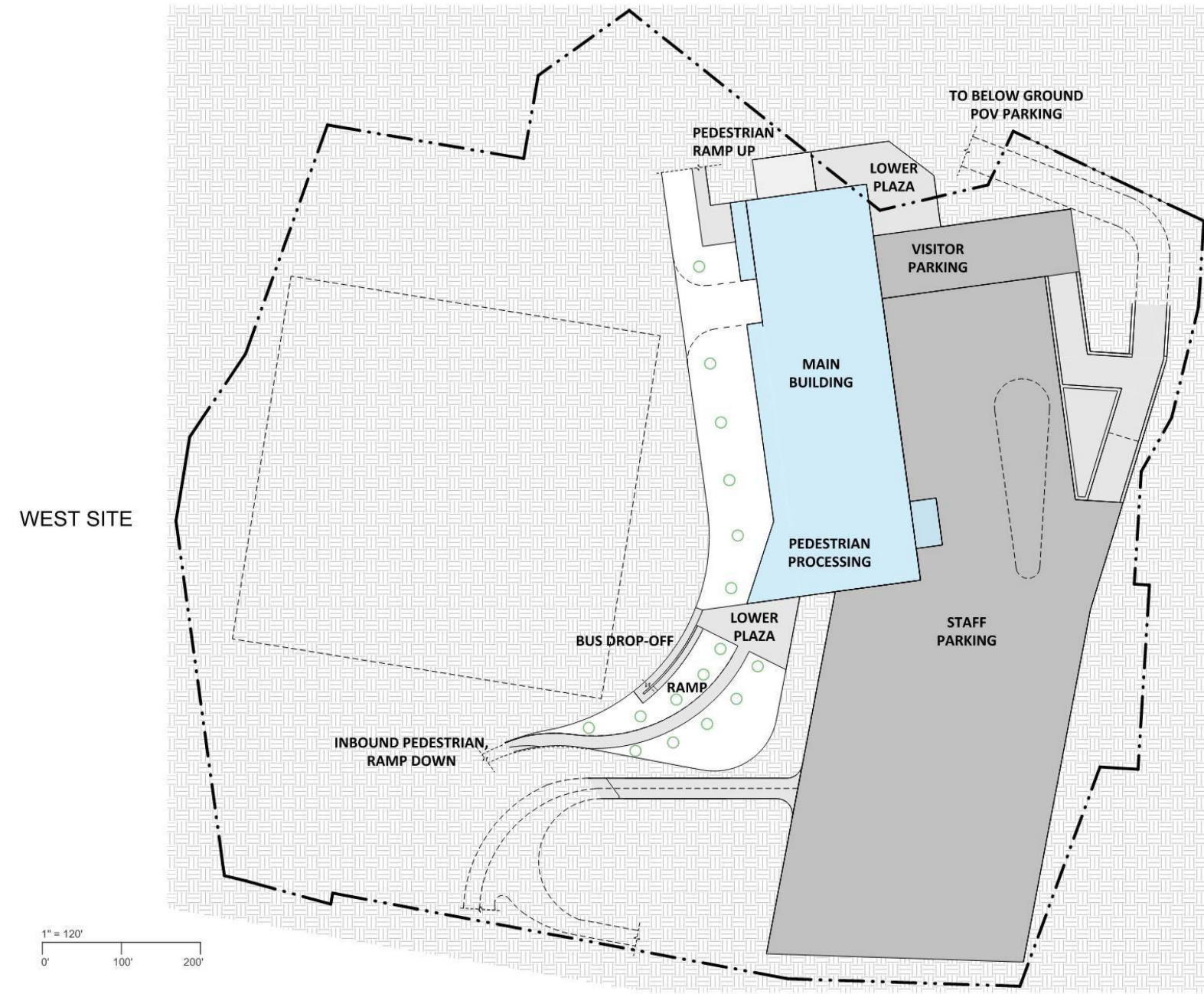


Bridge of the Americas Land Port of Entry Modernization
El Paso, Texas



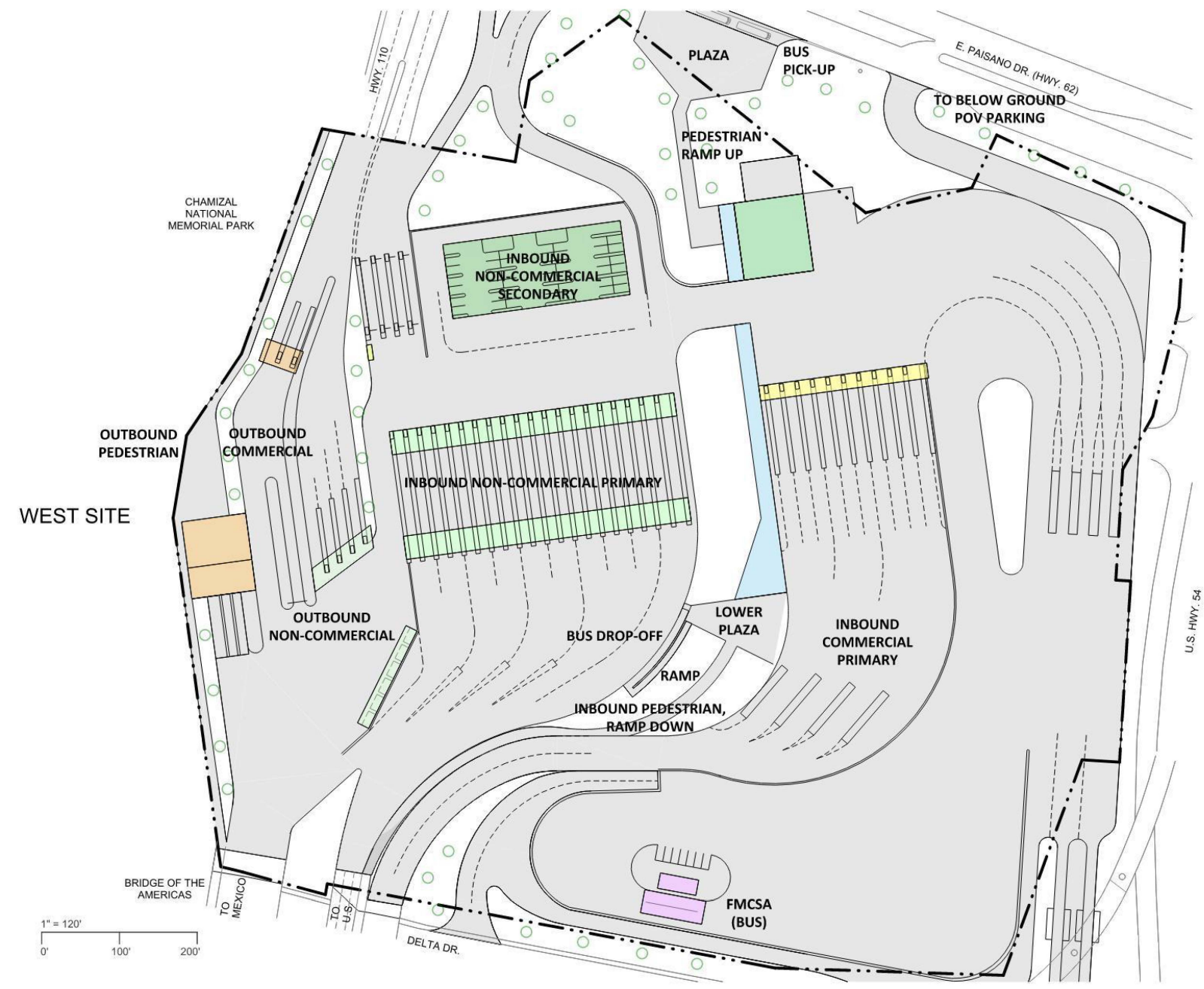
ALTERNATIVE 2 Lower Level

• text



ALTERNATIVE 2 Ground Level

• text



COMMUNITY ENGAGEMENT MEETING Chamizal National Memorial Theater | El Paso, Texas | April 4, 2023

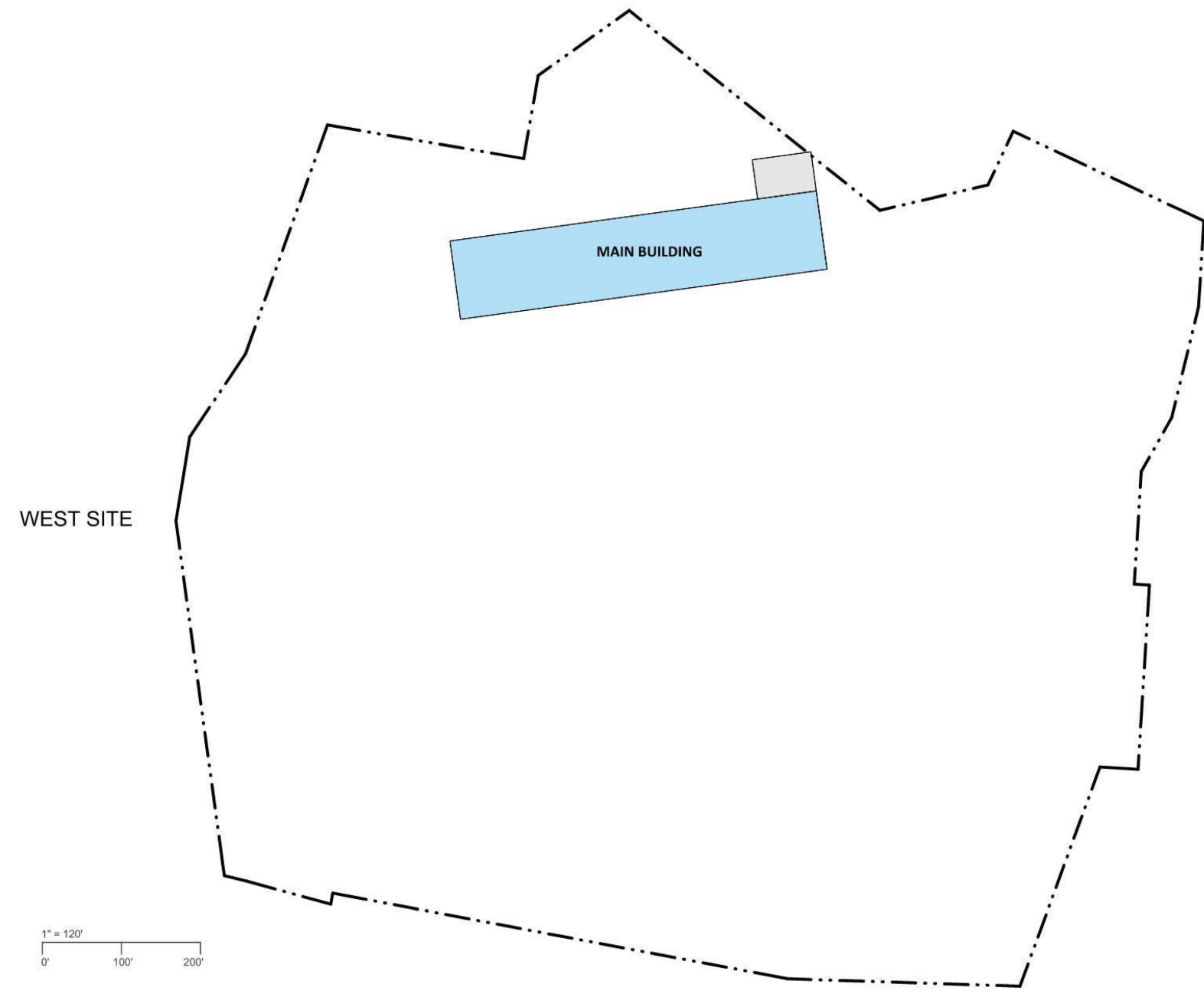


Bridge of the Americas Land Port of Entry Modernization
El Paso, Texas



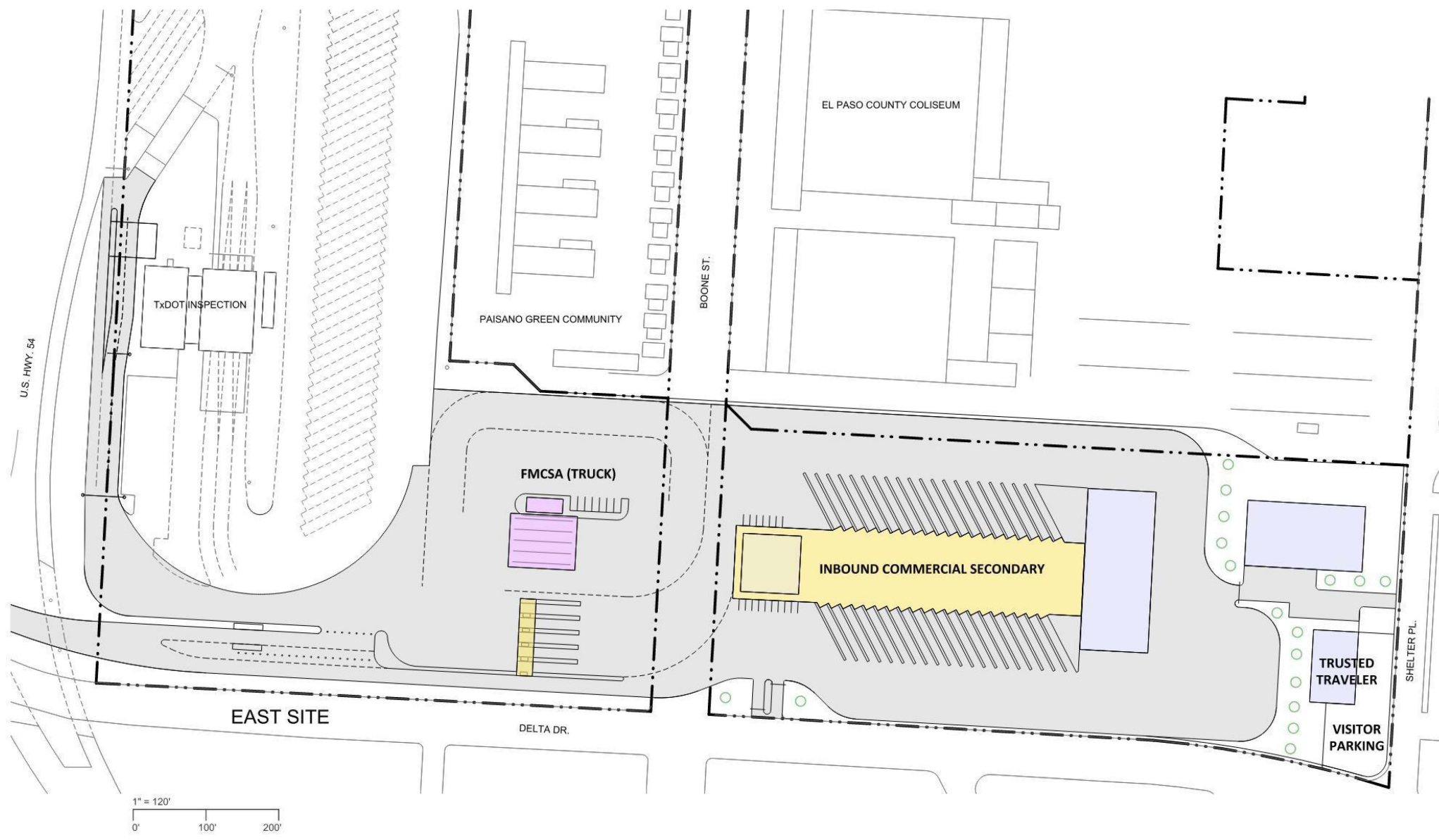
ALTERNATIVE 2 Upper Level

- text

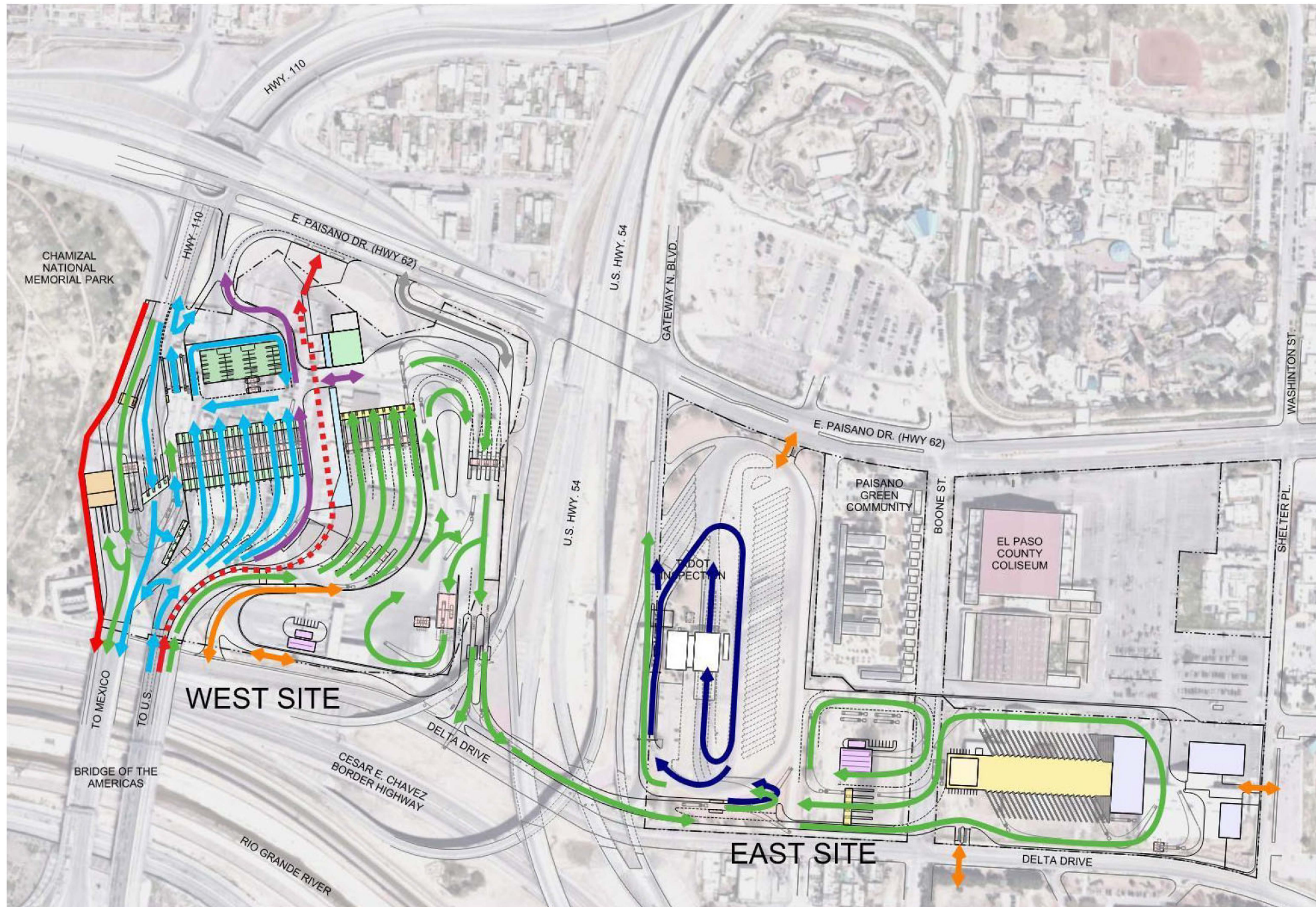


ALTERNATIVE 2 Ground Level East

•text



ALTERNATIVE 2 Traffic flow



- TRAVEL PATHS**
- PEDESTRIAN
 - NON-COMMERCIAL
 - COMMERCIAL
 - BUS
 - VISITOR/SERVICE
 - STAFF
 - TxDOT

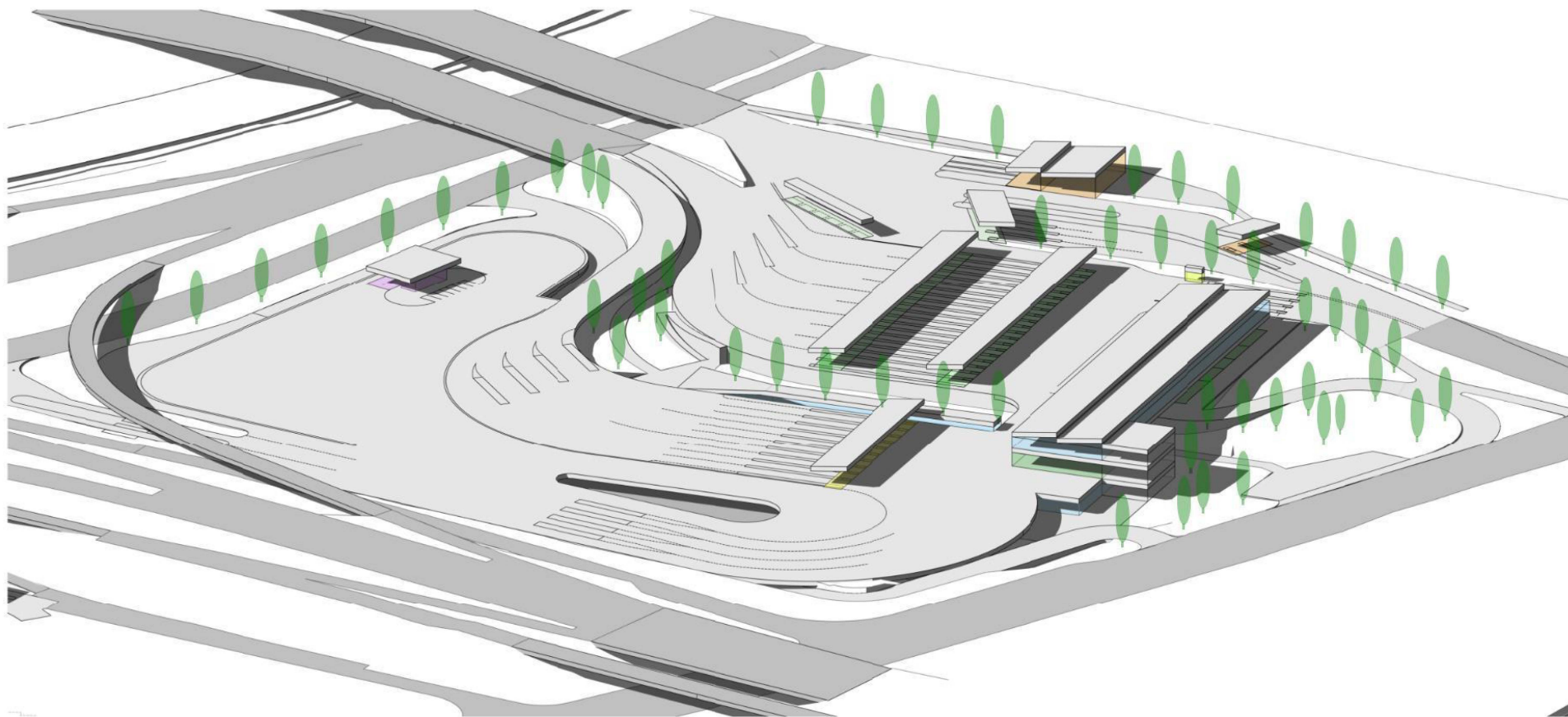
COMMUNITY ENGAGEMENT MEETING
 Chamizal National Memorial Theater | El Paso, Texas | April 4,
 2023



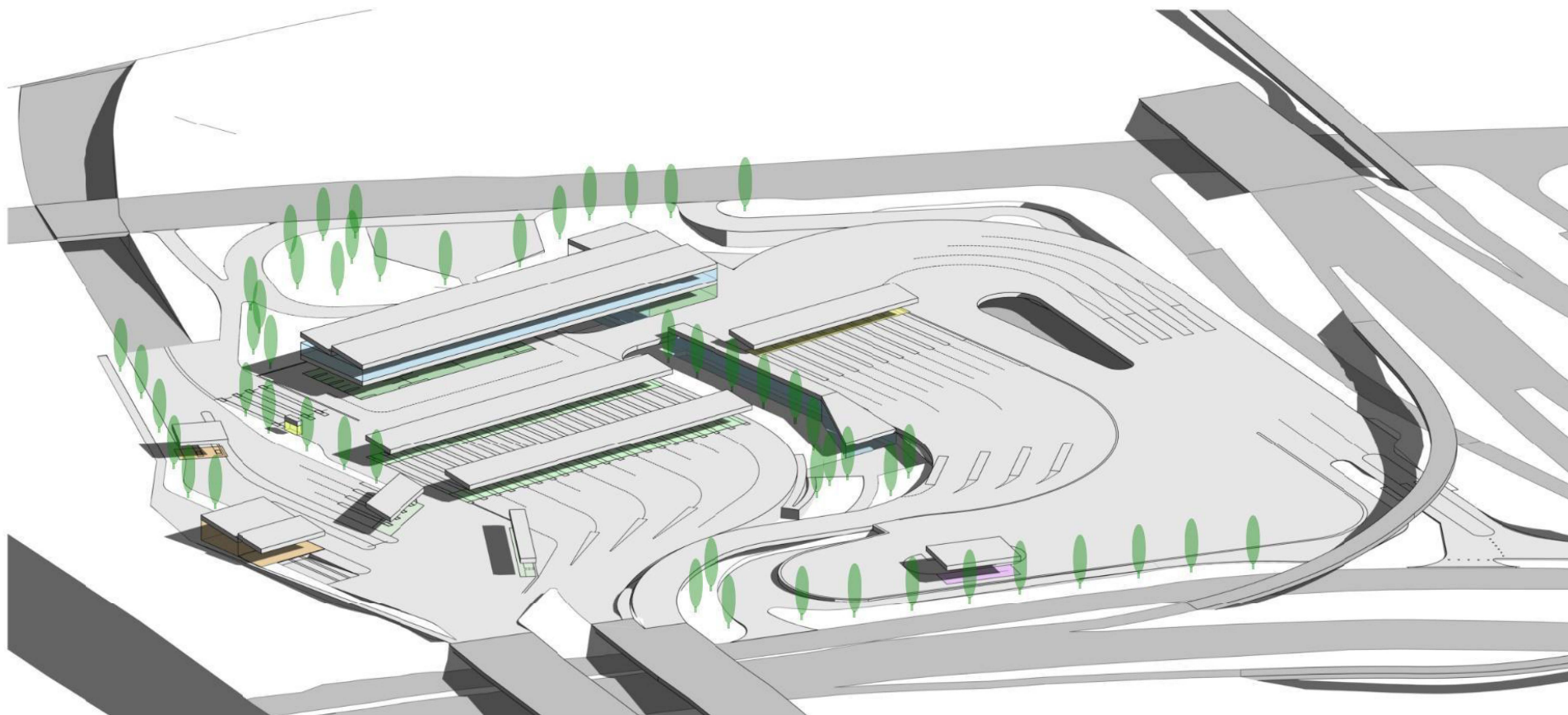
Bridge of the Americas Land Port of Entry Modernization
 El Paso, Texas



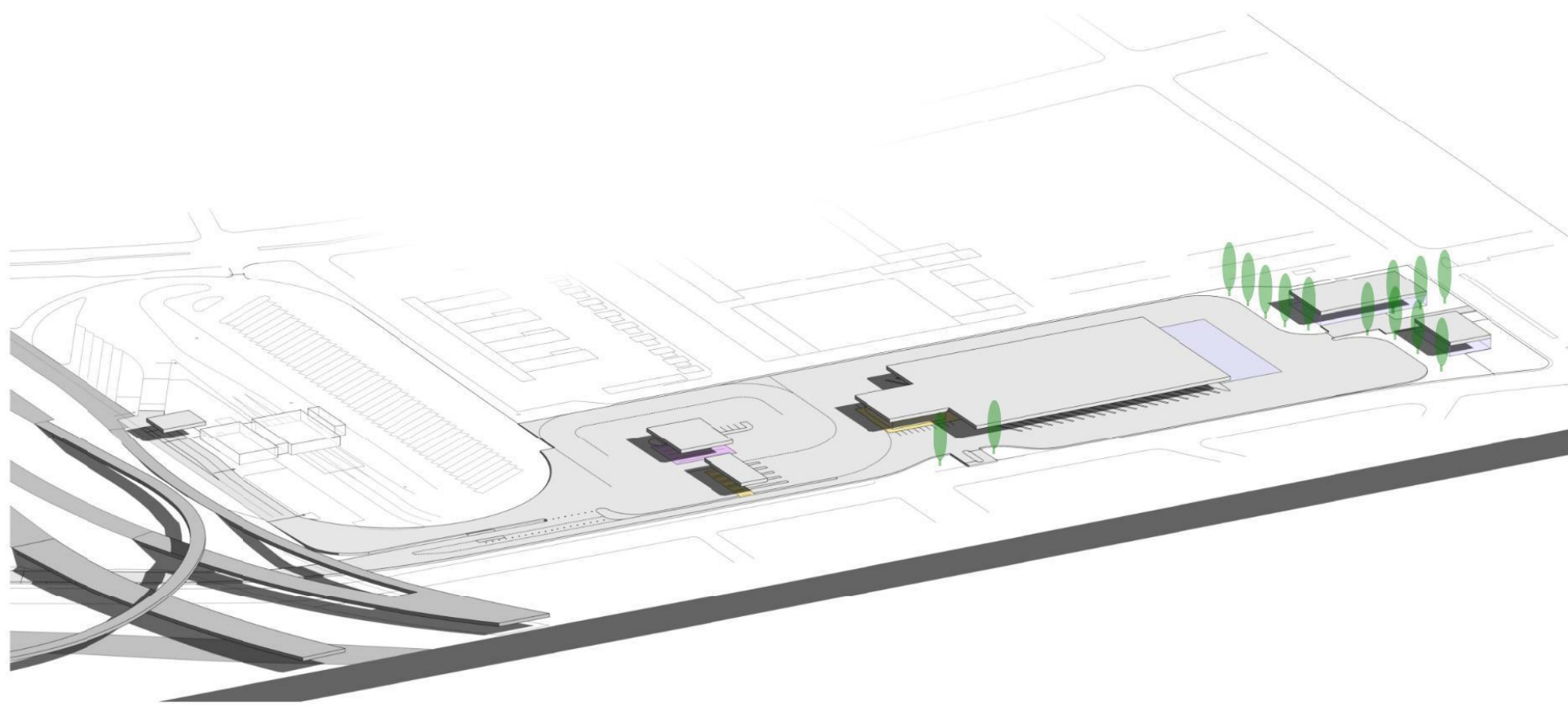
ALTERNATIVE 2
View to Bridge



ALTERNATIVE 2
View from
Bridge



ALTERNATIVE 2
View to East



Alternative 3



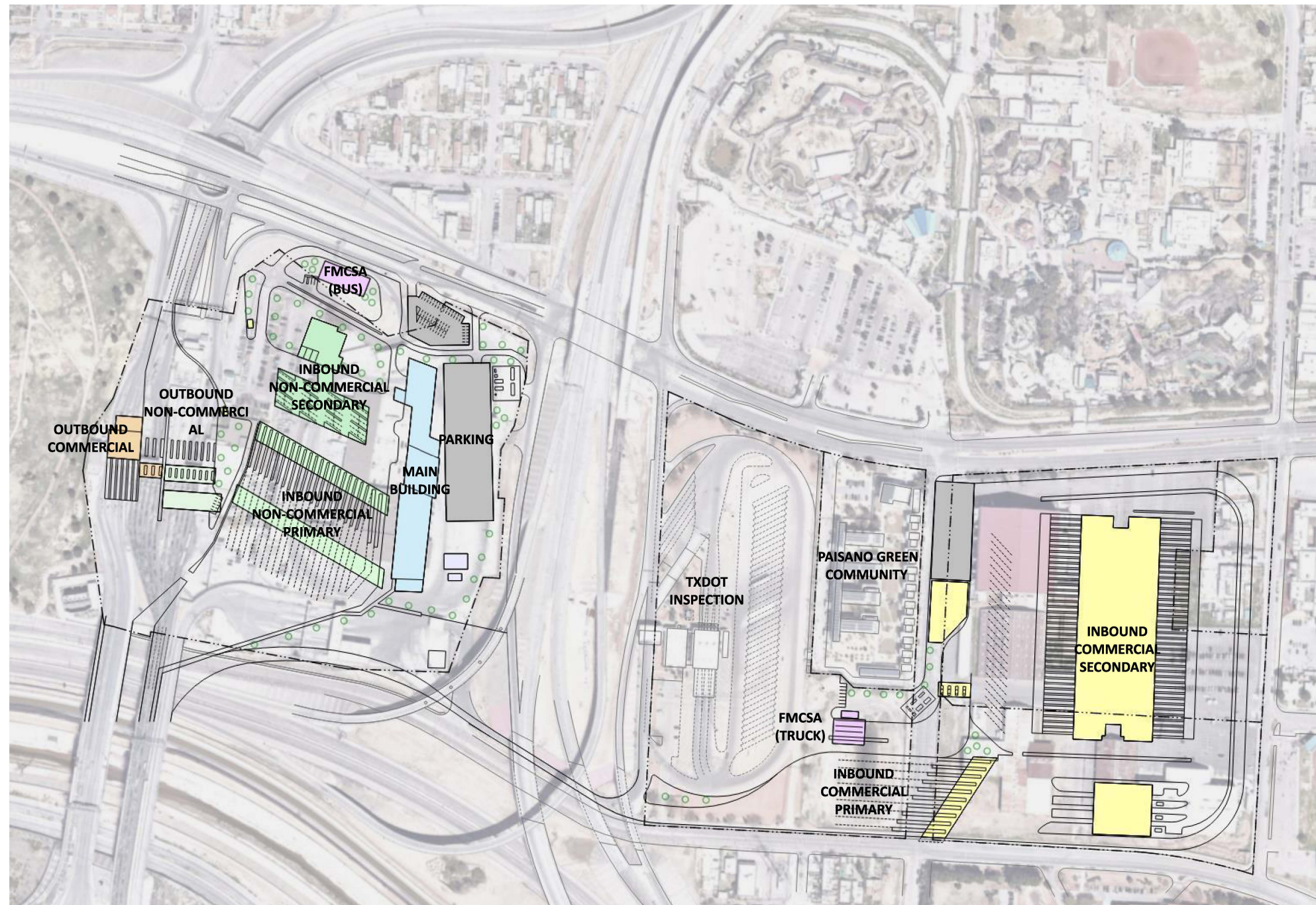
Bridge of the Americas Land Port of Entry Modernization
El Paso, Texas

COMMUNITY ENGAGEMENT MEETING
Chamizal National Memorial Theater | El Paso, Texas | April 4,
2023



ALTERNATIVE 3 Ground Level

• text



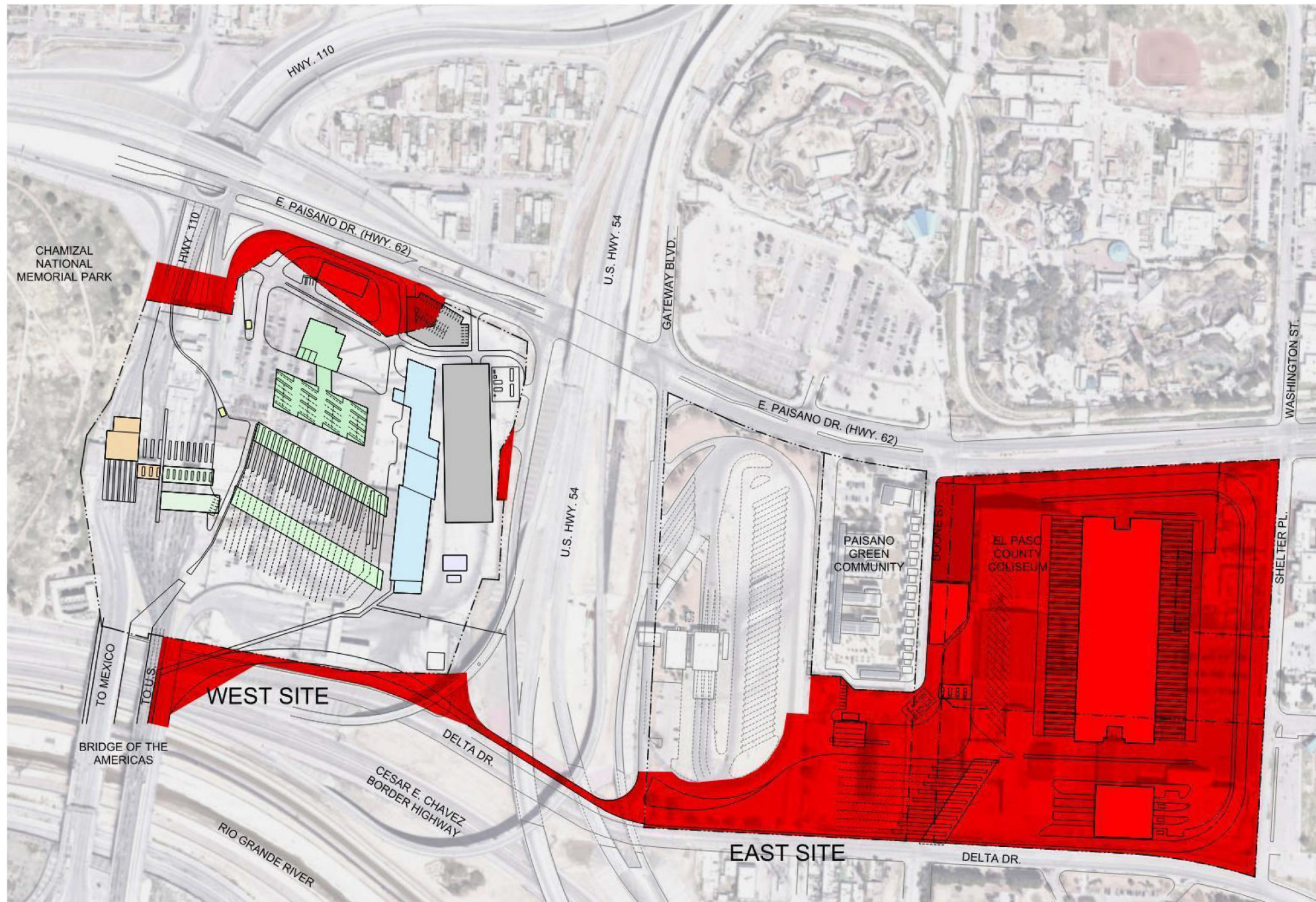
COMMUNITY ENGAGEMENT MEETING
Chamizal National Memorial Theater | El Paso, Texas | April 4,
2023



Bridge of the Americas Land Port of Entry Modernization
El Paso, Texas



ALTERNATIVE 3 Land Use



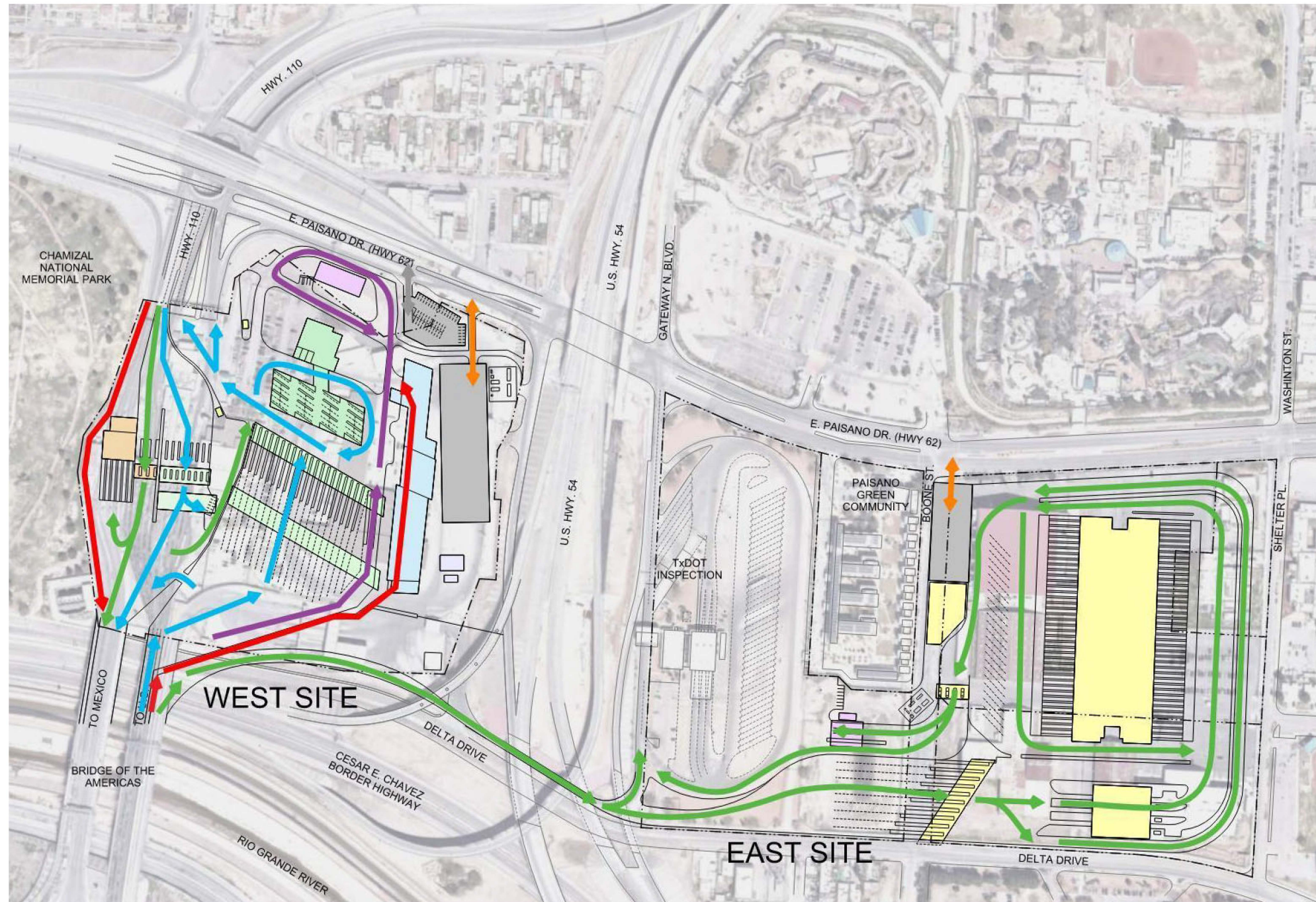
COMMUNITY ENGAGEMENT MEETING
Chamizal National Memorial Theater | El Paso, Texas | April 4,
2023



Bridge of the Americas Land Port of Entry Modernization
El Paso, Texas



ALTERNATIVE 3 Traffic flow



- TRAVEL PATHS**
- PEDESTRIAN
 - NON-COMMERCIAL
 - COMMERCIAL
 - BUS
 - VISITOR/SERVICE
 - STAFF
 - TxDOT

COMMUNITY ENGAGEMENT MEETING
 Chamizal National Memorial Theater | El Paso, Texas | April 4,
 2023



General Services Administration Expansion and Modernization of the Bridge of the Americas (BOTA) Land Port of Entry, El Paso, Texas **Environmental Assessment**

GSA has independent obligations under both NEPA and NHPA to seek public input to help ensure that our natural, cultural, and historic environment is given consideration in project planning. This process can be done by engaging the public in scoping meetings where you can provide input on the proposed project.

Today's meeting will begin the public scoping process for the BOTA EA. There will be a formal, environmental public meeting where you may offer comments, suggestions, concerns positive or negative to the team. The views and comments of the public are necessary to help determine the scope and content of the environmental analysis. An important objective of scoping is to identify specific elements of the environment that might be affected if the proposal is carried out. Potential impacts raised during scoping will be analyzed in the subsequent EA. We anticipate the Formal Public Scoping Meeting will occur in the upcoming summer months 2023. Details will be provided on the GSA Region 7 BIL website, posted in the local newspaper and other avenues available to reach interested parties.

<https://www.gsa.gov/about-us/regions/welcome-to-the-greater-southwest-region-7/buildings-and-facilities/texas/bridge-of-the-americas-land-port-of-entry>

Community Comments

Thank you for your input.

