

Raul Hector Castro Land Port of Entry, Douglas, Arizona Draft Supplemental Environmental Impact Statement

Public Meeting Handout

May 7, 2025, 4-6 p.m. MT

Introduction

The U.S. General Services Administration (GSA) has prepared a Draft Supplemental Environmental Impact Statement (DSEIS), which examines the potential impacts resulting from construction of flood control and utility upgrades in support of the Raul Hector Castro (RHC) Land Port of Entry (LPOE) Expansion and Modernization Project in Douglas, Arizona (Figure 1). The existing RHC LPOE is owned and managed by GSA and is operated by the U.S. Department of Homeland Security's Customs and Border Protection (CBP). The DSEIS describes the purpose and need for the project; alternatives considered; the existing environment that could be affected; the potential impacts resulting from each of the alternatives; and proposed best management practices and impact reduction and mitigation measures.



Project Background

The RHC LPOE is a full-service, multi-modal port, where CBP currently inspects commercially-owned vehicles (COVs), privately-owned vehicles (POVs), and pedestrians crossing the U.S.–Mexico border between Douglas, Arizona and Agua Prieta, Sonora in Mexico. The purpose of this project is to address overall flood control and utility requirements (i.e., stormwater, electrical, sanitary sewer, and fiber optic), as well as improve port operational efficiency for the RHC LPOE Expansion and Modernization Project. The project is needed to avoid engineering conflicts between the current alignment of the Rose Avenue channel with the current proposed layout for the expanded and modernized RHC LPOE; to provide sufficient stormwater capacity for the expanded and modernized RHC LPOE; and to enhance overall functionality and safety. In addition, the project is needed to meet proposed utility requirements of the expanded and modernized RHC LPOE and bring them in line with current land port design standards and operational requirements.

Further information on the project, including an electronic copy of the DSEIS, may be found online at: <https://www.gsa.gov/about-us/regions/welcome-to-the-pacific-rim-region-9/land-ports-of-entry/raul-hector-castro-land-port-of-entry>. A hard copy of the DSEIS can be viewed at the Douglas Public Library located at 560 E 10th Street, Douglas, Arizona 85607.

Proposed Alternatives

The DSEIS analyzes one "action" alternative and one "no action" alternative. Figure 1 provides a preliminary concept site plan for the project and was used for determining environmental analysis in the DSEIS.

Alternative 1 – Flood Control and Utility Upgrades:

- Construct an approximately 2,750-foot-long stormwater channel
- Evaluate and improve the existing concrete box culvert (CBC) beneath the LPOE
- Demolish the existing stormwater channel segment west of Pan American Avenue
- Install a new CBC where the proposed stormwater channel crosses Chino Road
- Construct a maintenance road on either the north or south side of the proposed stormwater channel
- Potentially construct security fencing on the north side of the proposed stormwater channel
- Construct a new approximately 6.2-acre stormwater basin
- Obtain necessary land and right-of-way permissions
- Replace or install approximately 6,500 feet of electrical, 4,700 feet of sanitary sewer, and 1,400 feet of fiber optic lines in the vicinity of the RHC LPOE

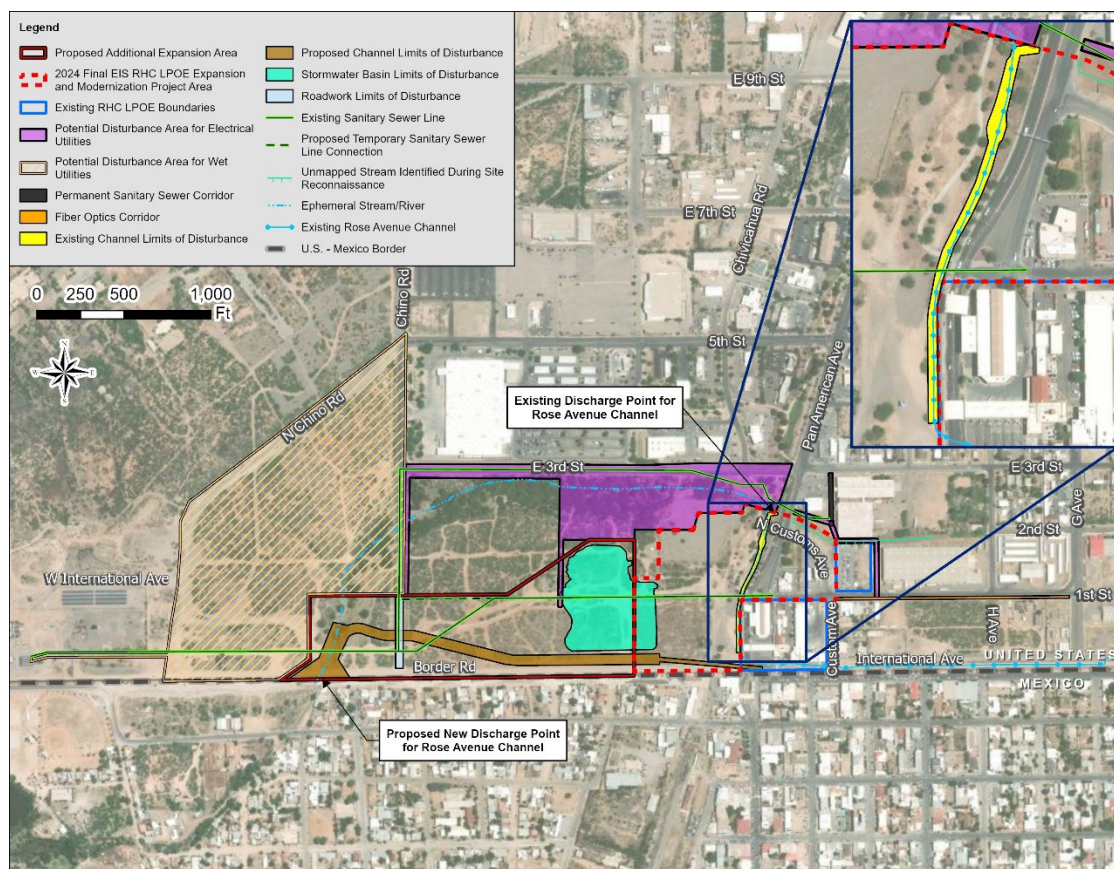


Figure 1. Proposed Action Limits of Disturbance

The "no action" alternative assumes that GSA would construct the RHC Expansion and Modernization Project as described in the 2024 Final EIS and would not construct flood control or utility upgrades in support of that project. This would result in an increase in flood potential at the expanded and modernized RHC LPOE and the surrounding area, increasing risk that the RHC LPOE could be partially shutdown or impacted during a storm event, impeding functionality and jeopardizing the security and safety at the LPOE. In addition, utility requirements for the expanded and modernized RHC LPOE would not be met, lessening the port's operational efficiency and its ability to support the CBP mission.

National Environmental Policy Act (NEPA) Process

We are currently in the DSEIS Public Comment Period of the NEPA process. Scoping comments were previously solicited during the Public Scoping Period and have been incorporated into the DSEIS. Public comments on the DSEIS are encouraged. Following the end of the DSEIS Public Comment Period, GSA will address comments and prepare the Final SEIS.



Public Comments

Written comments on the DSEIS must be received or postmarked by May 19, 2025 to be considered in the Final SEIS. Comments may be submitted at the in-person public meeting, by email, or by regular mail.

- By email, send to: osmahn.kadri@gsa.gov (reference "RHC LPOE DSEIS" in subject line).
- By U.S. mail, send to: Attention: Osmahn Kadri, RHC LPOE EIS
U.S. General Services Administration
c/o Potomac-Hudson Engineering, Inc.
77 Upper Rock Circle, Suite 302
Rockville, MD 20850

For more information concerning this DSEIS, please contact Osmahn Kadri, GSA NEPA Project Manager, at the email provided above or call 415-522-3617.