

# EVSE Software Part 1

*April 11, 2023*

*Lynkwell*

*bp pulse*

*Noodoe*

*EVGateway*

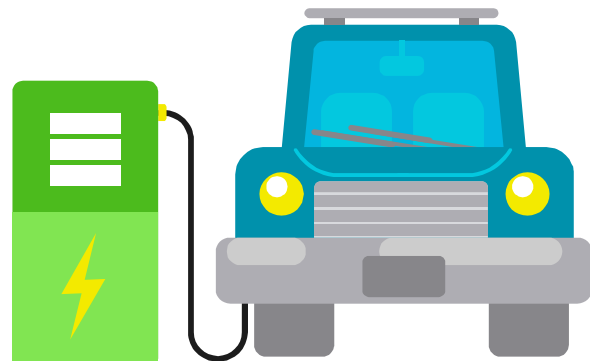
*Siemens (DepotFinity)*





# EVSE Software: Some of the many features available (CLIN 008)

- Set pricing policy (by kWh or time and time of day)
- Dashboard with analytics such as energy usage, frequency of charging and unique users
- Set access control: Who can use the stations and when
- View waitlist & get in line when one/both ports are in use
- Schedule charging
- Power sharing to maximize ports while avoiding costly upgrades
- Proactive monitoring and remote or over the air diagnosis
- Power management to avoid demand charges
- Uptime guarantee with non-performance penalties



# Part 1 Software Providers:

Lykwell

bp  
pulse

noodoe

 EV GATEWAY

SIEMENS

Part 2: Wednesday April 19 at 2:30PM ET

evconnect

blink<sup>®</sup>

Chargie

# Want to learn more about these and other EVSE Software solutions?

Visit [gsa.gov/evse](https://gsa.gov/evse) and click EVSE BPA Information  
view our EVSE BPA offerings by CLIN (CLIN 008 is  
software)



Fleet<sup>®</sup>