



2604 NE Industrial Drive, Suite 230
North Kansas City, Missouri 64117
Telephone: 816.231.5580
Fax: 816.231.5641
www.occutec.com

September 15, 2021

Diane Czarnecki
Industrial Hygienist
Facilities Management Division
GSA Public Buildings Service - Heartland Region

Re: Limited XRF Testing – Goodfellow Federal Center
4300 Goodfellow Blvd., St. Louis, MO 63120
Project Number: 920015

Dear Ms. Czarnecki,

OCCU-TEC, Inc. (OCCU-TEC) is pleased to present the following report outlining the recent X-Ray Fluorescent (XRF) testing for lead-based paint (LBP) associated with the stairwell handrails at the Goodfellow Federal Center in St. Louis, Missouri.

On August 30, 2021, through September 1, 2021, Mr. Jeff Smith of OCCU-TEC was onsite to complete XRF testing of surfaces associated with the stairwell handrails at the complex. Mr. Smith is a licensed LBP Risk Assessor with the State of Missouri Department of Health and Human Services. A copy of the inspectors' qualifications is attached to this report. The testing was in response to recent dust wipe sampling of various handrails that indicated the presence of lead-based paint. XRF testing was completed to determine if the paint itself contained lead or if the elevated wipe sampling results were from another source.

XRF testing was conducted using Heuresis Corporation Model Pb200i X-ray Florescence (XRF) detector, Serial #01098, General License # 53-0720, utilizing a Cobalt - 57 radioisotope source with an activity level of 5.0 millicuries (mCi). XRF results are classified as positive if they are greater than or equal to the stated threshold for the instrument (1.0 mg/cm²), and *negative* if they are *less than* the threshold. A minimum of three calibration check readings were taken, using a 1.0 mg/cm² calibration block, before beginning the inspection and at the end of the inspection.

Housing and Urban Development (HUD) and the State of Missouri defines lead-based paint as any paint or other surface coating materials that contain lead equal to or in excess of 1.0 mg/cm² or more than five-tenths percent by weight. OSHA's lead-in-construction standard was intended to apply to any detectable concentration of lead in paint, as even small concentrations of lead can result in unacceptable employee exposures depending upon the method of removal and other workplace conditions.

The lead testing data will show all components that were tested. Components with results at or above the HUD lead standard of 1.0 mg/cm² are highlighted in red. As per OSHA, the 1.0 mg/cm² threshold should not be interpreted as a "safe" level of lead. Also, if there are components that were not tested, they should be considered lead containing until additional testing proves otherwise.

Results of the XRF testing indicated that various handrail surfaces did contain lead. Of the 141 stair rail component assays, 66 of the results (47%) indicated lead above the HUD and State of Missouri standard. There were numerous handrail configurations, each of different age and painting histories. Apparently, some have had ADA improvements with both positive and negative paint on the same handrail assembly. In general, the high touch point surfaces along the handrails have the most paint chipping and/or chalking. Lower stair rail components are substantially intact.

A copy of the XRF analytical results is attached to this document.

OCCU-TEC appreciates the opportunity to provide the above referenced consulting services to the General Services Administration. If you have any questions, please contact us at (816) 231-5580.

Sincerely,

(b) (6)

Jeff Smith
Senior Project Manager

(b) (6)

Justin Arnold, CIEC
Project Manager (QA/QC)

Attachments:

XRF Analytical Results
Photo Log
Inspector Qualifications

Company	Heuresis Corp.
Model	Pb200i
Type	XRF Lead Paint Analyzer
Serial Num.	1098
App Version	Pb200i-REL-4.0-29

Limited Lead Based Paint Testing
GSA-Goodfellow Federal Center
Building 102E



Job Id	Reading #	Concentration	Units	3 SD	Result	Action Level	Nom secs	Date	Time	User	Mode	Analytic Mode	Floor	Room	Side	Component	Color	Substrate	Condition
920015	753	3.8	mg/cm2	0.5	Positive	1	1	8/30/2021	16:57:07	Smith	Action Level	Lead Paint	1.5	Stairwell	South	Handrail	Green	Metal	Intact
920015	754	4.4	mg/cm2	0.4	Positive	1	2	8/30/2021	16:58:06	Smith	Action Level	Lead Paint	1.5	Stairwell	South	Midrail	Green	Metal	Intact
920015	755	4.2	mg/cm2	0.4	Positive	1	2	8/30/2021	16:59:06	Smith	Action Level	Lead Paint	1.5	Stairwell	South	Stringer	Green	Metal	Intact
920015	756	0	mg/cm2	0.4	Negative	1	2	8/30/2021	16:59:56	Smith	Action Level	Lead Paint	1.5	Stairwell	South	Baluster	Green	Metal	Intact
920015	757	-0.1	mg/cm2	0.4	Negative	1	2	8/30/2021	17:03:33	Smith	Action Level	Lead Paint	1	Stairwell	North	Handrail	Brown	Metal	Intact
920015	758	0	mg/cm2	0.4	Negative	1	2	8/30/2021	17:04:13	Smith	Action Level	Lead Paint	1	Stairwell	North	Midrail	Brown	Metal	Intact
920015	759	0.4	mg/cm2	0.4	Negative	1	2	8/30/2021	17:04:52	Smith	Action Level	Lead Paint	1	Stairwell	North	Baluster	Brown	Metal	Intact
920015	760	0.2	mg/cm2	0.4	Negative	1	2	8/30/2021	17:05:32	Smith	Action Level	Lead Paint	1	Stairwell	North	Stringer	Brown	Metal	Intact
920015	761	0.9	mg/cm2	0.2		1	5	8/30/2021	17:16:24	Smith	Action Level	Lead Paint							
920015	762	0.9	mg/cm2	0.2		1	5	8/30/2021	17:20:59	Smith	Action Level	Lead Paint							
920015	763	0.9	mg/cm2	0.2		1	5	8/30/2021	17:22:51	Smith	Action Level	Lead Paint							

Black = Negative
Blue = Calibration/Null
Red = Positive

Intact = Paint in good condition
Fair = below De minimis levels
Poor = Above De minimis levels

Company	Heuresis Corp.
Model	Pb200i
Type	XRF Lead Paint Analyzer
Serial Num.	1098
App Version	Pb200i-REL-4.0-29

Limited Lead Based Paint Testing
GSA-Goodfellow Federal Center
Building 103



Job Id	Reading #	Concentration	Units	3 SD	Result	Action Level	Nom secs	Date	Time	User	Mode	Analytic Mode	Floor	Room	Side	Component	Color	Substrate	Condition
920015	853	0.8	mg/cm2	0.2		1	5	9/1/2021	10:39:53	Smith	Action Level	Lead Paint							
920015	854	0.8	mg/cm2	0.2		1	5	9/1/2021	10:41:43	Smith	Action Level	Lead Paint							
920015	855	0.8	mg/cm2	0.2		1	5	9/1/2021	10:43:23	Smith	Action Level	Lead Paint							
920015	856	-0.1	mg/cm2	0.4	Negative	1	2	9/1/2021	11:03:04	Smith	Action Level	Lead Paint	1	Stairwell	J-21	Handrail	Brown	Metal	Intact
920015	857	0.5	mg/cm2	0.4	Negative	1	2	9/1/2021	11:03:43	Smith	Action Level	Lead Paint	1	Stairwell	J-21	Midrail	Brown	Metal	Intact
920015	858	-0.7	mg/cm2	0.5	Negative	1	1	9/1/2021	11:04:34	Smith	Action Level	Lead Paint	1	Stairwell	J-21	Balluster	Brown	Metal	Intact
920015	859	8	mg/cm2	0.4	Positive	1	2	9/1/2021	11:05:13	Smith	Action Level	Lead Paint	1	Stairwell	J-21	Stringer	Brown	Metal	Intact
920015	860	0.4	mg/cm2	0.4	Negative	1	2	9/1/2021	11:09:01	Smith	Action Level	Lead Paint	1	Stairwell	J-32	Handrail	Brown	Metal	Intact
920015	861	-0.5	mg/cm2	0.5	Negative	1	1	9/1/2021	11:09:47	Smith	Action Level	Lead Paint	1	Stairwell	J-32	Midrail	Brown	Metal	Intact
920015	862	0.3	mg/cm2	0.4	Negative	1	2	9/1/2021	11:10:20	Smith	Action Level	Lead Paint	1	Stairwell	J-32	Balluster	Brown	Metal	Intact
920015	863	-0.3	mg/cm2	0.4	Negative	1	2	9/1/2021	11:10:53	Smith	Action Level	Lead Paint	1	Stairwell	J-32	Stringer	Brown	Metal	Intact
920015	864	0.4	mg/cm2	0.4	Negative	1	2	9/1/2021	11:16:46	Smith	Action Level	Lead Paint	1.5	Stairwell	B-32	Handrail	Brown	Metal	Intact
920015	865	0.2	mg/cm2	0.4	Negative	1	2	9/1/2021	11:17:29	Smith	Action Level	Lead Paint	1.5	Stairwell	B-32	Midrail	Brown	Metal	Intact
920015	866	-0.4	mg/cm2	0.5	Negative	1	1	9/1/2021	11:18:08	Smith	Action Level	Lead Paint	1.5	Stairwell	B-32	Balluster	Brown	Metal	Intact
920015	867	2.6	mg/cm2	0.4	Positive	1	1	9/1/2021	11:18:42	Smith	Action Level	Lead Paint	1.5	Stairwell	B-32	Stringer	Brown	Metal	Intact
920015	868	-0.8	mg/cm2	0.5	Negative	1	1	9/1/2021	11:25:12	Smith	Action Level	Lead Paint	1	Stairwell	J-39	Handrail	Brown	Metal	Intact
920015	869	0.4	mg/cm2	0.4	Negative	1	2	9/1/2021	11:25:48	Smith	Action Level	Lead Paint	1	Stairwell	J-39	Midrail	Brown	Metal	Intact
920015	870	0.3	mg/cm2	0.4	Negative	1	2	9/1/2021	11:26:24	Smith	Action Level	Lead Paint	1	Stairwell	J-39	Balluster	Brown	Metal	Intact
920015	871	2.3	mg/cm2	0.4	Positive	1	2	9/1/2021	11:27:00	Smith	Action Level	Lead Paint	1	Stairwell	J-39	Stringer	Brown	Metal	Intact

Black = Negative
Blue = Calibration/Null
Red = Positive

Intact = Paint in good condition
Fair = below De minimis levels
Poor = Above De minimis levels

Company	Heuresis Corp.
Model	Pb200i
Type	XRF Lead Paint Analyzer
Serial Num.	1098
App Version	Pb200i-REL-4.0-29

Limited Lead Based Paint Testing
GSA-Goodfellow Federal Center
Building 103D



Job Id	Reading #	Concentration	Units	3 SD	Result	Action Level	Nom secs	Date	Time	User	Mode	Analytic Mode	Floor	Room	Side	Component	Color	Substrate	Condition
920015	872	3.5	mg/cm2	0.5	Positive	1	1	9/1/2021	11:29:49	Smith	Action Level	Lead Paint	1	Stairwell	South	Handrail	Blue	Metal	Fair
920015	873	4.4	mg/cm2	0.5	Positive	1	1	9/1/2021	11:30:25	Smith	Action Level	Lead Paint	1	Stairwell	South	Midrail	Blue	Metal	Intact
920015	874	7.7	mg/cm2	0.5	Positive	1	1	9/1/2021	11:31:03	Smith	Action Level	Lead Paint	1	Stairwell	South	Balluster	Blue	Metal	Intact
920015	875	4.5	mg/cm2	0.4	Positive	1	2	9/1/2021	11:31:41	Smith	Action Level	Lead Paint	1	Stairwell	South	Stringer	Blue	Metal	Intact
920015	876	3.6	mg/cm2	0.5	Positive	1	1	9/1/2021	11:37:54	Smith	Action Level	Lead Paint	1.5	Stairwell	North	Handrail	Blue	Metal	Poor
920015	877	9.5	mg/cm2	0.5	Positive	1	1	9/1/2021	11:38:32	Smith	Action Level	Lead Paint	1.5	Stairwell	North	Midrail	Blue	Metal	Intact
920015	878	5.7	mg/cm2	0.4	Positive	1	2	9/1/2021	11:39:12	Smith	Action Level	Lead Paint	1.5	Stairwell	North	Balluster	Blue	Metal	Intact
920015	879	1.9	mg/cm2	0.4	Positive	1	2	9/1/2021	11:39:47	Smith	Action Level	Lead Paint	1.5	Stairwell	North	Stringer	Blue	Metal	Intact

Black = Negative
Blue = Calibration/Null
Red = Positive

Intact = Paint in good condition
Fair = below De minimis levels
Poor = Above De minimis levels

Company	Heuresis Corp.
Model	Pb200i
Type	XRF Lead Paint Analyzer
Serial Num.	1098
App Version	Pb200i-REL-4.0-29

Limited Lead Based Paint Testing
GSA-Goodfellow Federal Center
Building 103E



Job Id	Reading #	Concentration	Units	3 SD	Result	Action Level	Nom secs	Date	Time	User	Mode	Analytic Mode	Floor	Room	Side	Component	Color	Substrate	Condition
920015	880	0	mg/cm2	0.4	Negative	1	2	9/1/2021	11:43:36	Smith	Action Level	Lead Paint	1	Stairwell	South	Handrail	Brown	Metal	Intact
920015	881	0	mg/cm2	0.4	Negative	1	2	9/1/2021	11:44:11	Smith	Action Level	Lead Paint	1	Stairwell	South	Midrail	Brown	Metal	Intact
920015	882	0.4	mg/cm2	0.4	Negative	1	2	9/1/2021	11:44:50	Smith	Action Level	Lead Paint	1	Stairwell	South	Balluster	Brown	Metal	Intact
920015	883	-0.3	mg/cm2	0.4	Negative	1	2	9/1/2021	11:45:26	Smith	Action Level	Lead Paint	1	Stairwell	South	Stringer	Brown	Metal	Intact
920015	884	3.3	mg/cm2	0.5	Positive	1	1	9/1/2021	11:49:21	Smith	Action Level	Lead Paint	1	Stairwell	North	Handrail	Blue	Metal	Intact
920015	885	2.1	mg/cm2	0.4	Positive	1	2	9/1/2021	11:50:00	Smith	Action Level	Lead Paint	1	Stairwell	North	Midrail	Blue	Metal	Intact
920015	886	4.4	mg/cm2	0.5	Positive	1	1	9/1/2021	11:50:39	Smith	Action Level	Lead Paint	1	Stairwell	North	Balluster	Blue	Metal	Intact
920015	887	4.5	mg/cm2	0.4	Positive	1	2	9/1/2021	11:51:19	Smith	Action Level	Lead Paint	1	Stairwell	North	Stringer	Blue	Metal	Intact
920015	888	0.8	mg/cm2	0.2		1	5	9/1/2021	12:01:09	Smith	Action Level	Lead Paint							
920015	889	0.8	mg/cm2	0.2		1	5	9/1/2021	12:02:43	Smith	Action Level	Lead Paint							
920015	890	0.8	mg/cm2	0.2		1	5	9/1/2021	12:04:25	Smith	Action Level	Lead Paint							

Black = Negative

Blue = Calibration/Null

Red = Positive

Intact = Paint in good condition

Fair = below De minimis levels

Poor = Above De minimis levels

Company	Heuresis Corp.
Model	Pb200i
Type	XRF Lead Paint Analyzer
Serial Num.	1098
App Version	Pb200i-REL-4.0-29

Limited Lead Based Paint Testing
GSA-Goodfellow Federal Center
Building 104



Job Id	Reading #	Concentration	Units	3 SD	Result	Action Level	Nom secs	Date	Time	User	Mode	Analytic Mode	Floor	Room	Side	Component	Color	Substrate	Condition
920015	806	0.9	mg/cm2	0.2		1	5	8/31/2021	14:16:44	Smith	Action Level	Lead Paint							
920015	807	0.8	mg/cm2	0.2		1	5	8/31/2021	14:18:27	Smith	Action Level	Lead Paint							
920015	808	0.8	mg/cm2	0.2		1	5	8/31/2021	14:20:11	Smith	Action Level	Lead Paint							
920015	809	0.4	mg/cm2	0.4	Negative	1	2	8/31/2021	14:31:57	Smith	Action Level	Lead Paint	1.5	Stairwell	J-16	Handrail Extension	Gray	Metal	Intact
920015	810	3.1	mg/cm2	0.4	Positive	1	2	8/31/2021	14:32:42	Smith	Action Level	Lead Paint	1.5	Stairwell	J-16	Midrail	Gray	Metal	Intact
920015	811	3.7	mg/cm2	0.5	Positive	1	1	8/31/2021	14:33:21	Smith	Action Level	Lead Paint	1.5	Stairwell	J-16	Balluster	Gray	Metal	Intact
920015	812	9.1	mg/cm2	0.4	Positive	1	2	8/31/2021	14:33:54	Smith	Action Level	Lead Paint	1.5	Stairwell	J-16	Stringer	Gray	Metal	Intact
920015	813	0.4	mg/cm2	0.4	Negative	1	2	8/31/2021	14:38:55	Smith	Action Level	Lead Paint	2	Stairwell	B-17	Handrail Extension	Gray	Metal	Fair
920015	814	3	mg/cm2	0.5	Positive	1	1	8/31/2021	14:39:32	Smith	Action Level	Lead Paint	2	Stairwell	B-17	Midrail	Gray	Metal	Intact
920015	815	6.8	mg/cm2	0.4	Positive	1	2	8/31/2021	14:40:10	Smith	Action Level	Lead Paint	2	Stairwell	B-17	Balluster	Gray	Metal	Intact
920015	816	2	mg/cm2	0.4	Positive	1	2	8/31/2021	14:40:43	Smith	Action Level	Lead Paint	2	Stairwell	B-17	Stringer	Gray	Metal	Intact
920015	817	-0.1	mg/cm2	0.4	Negative	1	2	8/31/2021	14:41:50	Smith	Action Level	Lead Paint	2	Stairwell	B-17	S. Handrail	Gray	Metal	Intact
920015	818	0.3	mg/cm2	0.4	Negative	1	2	8/31/2021	14:46:11	Smith	Action Level	Lead Paint	1.5	Stairwell	J-28	Handrail Extension	Black	Metal	Intact
920015	819	0.5	mg/cm2	0.3	Negative	1	3	8/31/2021	14:46:46	Smith	Action Level	Lead Paint	1.5	Stairwell	J-28	Midrail	Black	Metal	Intact
920015	820	2.8	mg/cm2	0.4	Positive	1	2	8/31/2021	14:47:45	Smith	Action Level	Lead Paint	1.5	Stairwell	J-28	Balluster	Black	Metal	Intact
920015	821	4.1	mg/cm2	0.4	Positive	1	2	8/31/2021	14:48:18	Smith	Action Level	Lead Paint	1.5	Stairwell	J-28	Stringer	Black	Metal	Intact
920015	822	-0.1	mg/cm2	0.4	Negative	1	2	8/31/2021	14:56:49	Smith	Action Level	Lead Paint	2	Stairwell	B-44	Handrail	Lt. Gray	Metal	Intact
920015	823	-0.1	mg/cm2	0.4	Negative	1	2	8/31/2021	14:57:26	Smith	Action Level	Lead Paint	2	Stairwell	B-44	Midrail	Lt. Gray	Metal	Intact
920015	824	0.4	mg/cm2	0.4	Negative	1	2	8/31/2021	14:58:05	Smith	Action Level	Lead Paint	2	Stairwell	B-44	Balluster	Lt. Gray	Metal	Intact
920015	825	4.4	mg/cm2	0.5	Positive	1	1	8/31/2021	14:58:44	Smith	Action Level	Lead Paint	2	Stairwell	B-44	Stringer	Lt. Gray	Metal	Intact
920015	826	-0.2	mg/cm2	0.4	Negative	1	2	8/31/2021	15:03:01	Smith	Action Level	Lead Paint	1.5	Stairwell	J-45	Handrail	Lt. Gray	Metal	Intact
920015	827	0	mg/cm2	0.4	Negative	1	2	8/31/2021	15:03:34	Smith	Action Level	Lead Paint	1.5	Stairwell	J-45	Midrail	Lt. Gray	Metal	Intact
920015	828	-0.1	mg/cm2	0.4	Negative	1	2	8/31/2021	15:04:08	Smith	Action Level	Lead Paint	1.5	Stairwell	J-45	Balluster	Lt. Gray	Metal	Intact
920015	829	2	mg/cm2	0.4	Positive	1	2	8/31/2021	15:04:53	Smith	Action Level	Lead Paint	1.5	Stairwell	J-45	Stringer	Lt. Gray	Metal	Intact
920015	830	0.4	mg/cm2	0.4	Negative	1	2	8/31/2021	15:10:19	Smith	Action Level	Lead Paint	1	Stairwell	J-53	Handrail	Lt. Gray	Metal	Intact
920015	831	-0.1	mg/cm2	0.4	Negative	1	2	8/31/2021	15:11:02	Smith	Action Level	Lead Paint	1	Stairwell	J-53	Midrail	Lt. Gray	Metal	Intact
920015	832	-0.1	mg/cm2	0.4	Negative	1	2	8/31/2021	15:11:35	Smith	Action Level	Lead Paint	1	Stairwell	J-53	Balluster	Lt. Gray	Metal	Intact
920015	833	2.6	mg/cm2	0.4	Positive	1	2	8/31/2021	15:12:13	Smith	Action Level	Lead Paint	1	Stairwell	J-53	Stringer	Lt. Gray	Metal	Intact

Black = Negative


Blue = Calibration/Null

Red = Positive

Intact = Paint in good condition

Fair = below De minimis levels

Poor = Above De minimis levels

Company	Heuresis Corp.	Limited Lead Based Paint Testing GSA-Goodfellow Federal Center Building 104E	 <small>ENERGY, ENVIRONMENTAL AND SAFETY SOLUTIONS</small> <small>2604 NE Industrial Drive, Suite 230 • North Kansas City, MO 64117</small> <small>816-231-5580 • www.occutec.com</small>
Model	Pb200i		
Type	XRF Lead Paint Analyzer		
Serial Num.	1098		
App Version	Pb200i-REL-4.0-29		

Job Id	Reading #	Concentration	Units	3 SD	Result	Action Level	Nom secs	Date	Time	User	Mode	Analytic Mode	Floor	Room	Side	Component	Color	Substrate	Condition
920015	834	0.1	mg/cm2	0.4	Negative	1	2	8/31/2021	15:16:15	Smith	Action Level	Lead Paint	1	Stairwell	Southeast	Handrail	White	Metal	Intact
920015	835	0.4	mg/cm2	0.4	Negative	1	2	8/31/2021	15:17:26	Smith	Action Level	Lead Paint	1	Stairwell	Southeast	Balluster	White	Metal	Intact
920015	836	-0.6	mg/cm2	0.5	Negative	1	1	8/31/2021	15:18:08	Smith	Action Level	Lead Paint	1	Stairwell	Southeast	Stringer	White	Metal	Intact
920015	837	-0.1	mg/cm2	0.4	Negative	1	2	8/31/2021	15:20:58	Smith	Action Level	Lead Paint	1	Stairwell	Northeast	Handrail	Lt. Gray	Metal	Intact
920015	838	-0.1	mg/cm2	0.4	Negative	1	2	8/31/2021	15:21:31	Smith	Action Level	Lead Paint	1	Stairwell	Northeast	Midrail	Lt. Gray	Metal	Intact
920015	839	-0.1	mg/cm2	0.4	Negative	1	2	8/31/2021	15:22:06	Smith	Action Level	Lead Paint	1	Stairwell	Northeast	Balluster	Lt. Gray	Metal	Intact
920015	840	2.2	mg/cm2	0.4	Positive	1	2	8/31/2021	15:22:41	Smith	Action Level	Lead Paint	1	Stairwell	Northeast	Stringer	Lt. Gray	Metal	Intact

Black = Negative

Blue = Calibration/Null

Red = Positive

Intact = Paint in good condition

Fair = below De minimis levels

Poor = Above De minimis levels

Company	Heuresis Corp.
Model	Pb200i
Type	XRF Lead Paint Analyzer
Serial Num.	1098
App Version	Pb200i-REL-4.0-29

Limited Lead Based Paint Testing
GSA-Goodfellow Federal Center
Building 104F



Job Id	Reading #	Concentration	Units	3 SD	Result	Action Level	Nom secs	Date	Time	User	Mode	Analytic Mode	Floor	Room	Side	Component	Color	Substrate	Condition
920015	841	0.4	mg/cm2	0.4	Negative	1	2	8/31/2021	15:27:21	Smith	Action Level	Lead Paint	1.5	Stairwell	South	Handrail	Brown	Metal	Fair
920015	842	6.7	mg/cm2	0.5	Positive	1	1	8/31/2021	15:28:10	Smith	Action Level	Lead Paint	1.5	Stairwell	South	Midrail	Brown	Metal	Intact
920015	843	7.7	mg/cm2	0.5	Positive	1	1	8/31/2021	15:28:43	Smith	Action Level	Lead Paint	1.5	Stairwell	South	Balluster	Brown	Metal	Intact
920015	844	3.6	mg/cm2	0.4	Positive	1	2	8/31/2021	15:29:18	Smith	Action Level	Lead Paint	1.5	Stairwell	South	Stringer	Brown	Metal	Intact
920015	845	2.4	mg/cm2	0.5	Positive	1	1	8/31/2021	15:30:16	Smith	Action Level	Lead Paint	1.5	Stairwell	South	Handrail	Brown	Metal	Intact
920015	846	0	mg/cm2	0.4	Negative	1	2	8/31/2021	15:33:31	Smith	Action Level	Lead Paint	1	Stairwell	North	Handrail	Brown	Metal	Intact
920015	847	0	mg/cm2	0.4	Negative	1	2	8/31/2021	15:34:05	Smith	Action Level	Lead Paint	1	Stairwell	North	Midrail	Brown	Metal	Intact
920015	848	0.4	mg/cm2	0.4	Negative	1	2	8/31/2021	15:34:43	Smith	Action Level	Lead Paint	1	Stairwell	North	Balluster	Brown	Metal	Intact
920015	849	0.4	mg/cm2	0.4	Negative	1	2	8/31/2021	15:35:30	Smith	Action Level	Lead Paint	1	Stairwell	North	Stringer	Brown	Metal	Intact
920015	850	0.8	mg/cm2	0.2		1	5	8/31/2021	16:39:07	Smith	Action Level	Lead Paint							
920015	851	0.8	mg/cm2	0.2		1	5	8/31/2021	16:40:41	Smith	Action Level	Lead Paint							
920015	852	0.8	mg/cm2	0.2		1	5	8/31/2021	16:42:26	Smith	Action Level	Lead Paint							

Black = Negative
Blue = Calibration/Null
Red = Positive

Intact = Paint in good condition
Fair = below De minimis levels
Poor = Above De minimis levels

Company	Heuresis Corp.
Model	Pb200i
Type	XRF Lead Paint Analyzer
Serial Num.	1098
App Version	Pb200i-REL-4.0-29


Limited Lead Based Paint Testing
GSA-Goodfellow Federal Center
Building 105



Job Id	Reading #	Concentration	Units	3 SD	Result	Action Level	Nom secs	Date	Time	User	Mode	Analytic Mode	Floor	Room	Side	Component	Color	Substrate	Condition
920015	764	0.8	mg/cm2	0.2		1	5	8/31/2021	10:41:15	Smith	Action Level	Lead Paint							
920015	765	0.9	mg/cm2	0.2		1	5	8/31/2021	10:42:49	Smith	Action Level	Lead Paint							
920015	766	0.9	mg/cm2	0.2		1	5	8/31/2021	10:44:23	Smith	Action Level	Lead Paint							
920015	767	0.4	mg/cm2	0.4	Negative	1	2	8/31/2021	11:04:14	Smith	Action Level	Lead Paint	1	Stairwell	B-17	Handrail Extension	Black	Metal	Intact
920015	768	5.9	mg/cm2	0.4	Positive	1	2	8/31/2021	11:04:55	Smith	Action Level	Lead Paint	1	Stairwell	B-17	Midrail	Black	Metal	Intact
920015	769	4.2	mg/cm2	0.4	Positive	1	2	8/31/2021	11:06:22	Smith	Action Level	Lead Paint	1	Stairwell	B-17	Balluster	Black	Metal	Intact
920015	770	2.9	mg/cm2	0.5	Positive	1	1	8/31/2021	11:07:20	Smith	Action Level	Lead Paint	1	Stairwell	B-17	Stringer	Black	Metal	Intact
920015	771	0.4	mg/cm2	0.4	Negative	1	2	8/31/2021	11:08:24	Smith	Action Level	Lead Paint	1	Stairwell	B-17	N. Handrail	Black	Metal	Intact
920015	772	0	mg/cm2	0.4	Negative	1	2	8/31/2021	11:13:52	Smith	Action Level	Lead Paint	1	Stairwell	B-45	Handrail Extension	Black	Metal	Intact
920015	773	4.7	mg/cm2	0.4	Positive	1	2	8/31/2021	11:14:29	Smith	Action Level	Lead Paint	1	Stairwell	B-45	Midrail	Black	Metal	Intact
920015	774	5.7	mg/cm2	0.5	Positive	1	1	8/31/2021	11:15:28	Smith	Action Level	Lead Paint	1	Stairwell	B-45	Balluster	Black	Metal	Intact
920015	775	4.5	mg/cm2	0.4	Positive	1	2	8/31/2021	11:16:09	Smith	Action Level	Lead Paint	1	Stairwell	B-45	Stringer	Black	Metal	Intact
920015	776	0.1	mg/cm2	0.4	Negative	1	2	8/31/2021	11:17:28	Smith	Action Level	Lead Paint	1	Stairwell	B-45	S. Handrail	Black	Metal	Intact
920015	777	0.4	mg/cm2	0.4	Negative	1	2	8/31/2021	11:23:15	Smith	Action Level	Lead Paint	1	Stairwell	J-28	Handrail Extension	Black	Metal	Intact
920015	778	2	mg/cm2	0.5	Positive	1	1	8/31/2021	11:23:57	Smith	Action Level	Lead Paint	1	Stairwell	J-28	Midrail	Black	Metal	Intact
920015	779	7.1	mg/cm2	0.5	Positive	1	1	8/31/2021	11:24:47	Smith	Action Level	Lead Paint	1	Stairwell	J-28	Balluster	Black	Metal	Intact
920015	780	1.8	mg/cm2	0.4	Positive	1	2	8/31/2021	11:25:22	Smith	Action Level	Lead Paint	1	Stairwell	J-28	Stringer	Black	Metal	Intact
920015	781	0.4	mg/cm2	0.4	Negative	1	2	8/31/2021	11:29:36	Smith	Action Level	Lead Paint	1	Stairwell	J-15	Handrail Extension	Black	Metal	Fair
920015	782	8.1	mg/cm2	0.5	Positive	1	1	8/31/2021	11:30:21	Smith	Action Level	Lead Paint	1	Stairwell	J-15	Midrail	Black	Metal	Intact
920015	783	8.4	mg/cm2	0.5	Positive	1	1	8/31/2021	11:30:54	Smith	Action Level	Lead Paint	1	Stairwell	J-15	Balluster	Black	Metal	Intact
920015	784	3	mg/cm2	0.4	Positive	1	2	8/31/2021	11:31:26	Smith	Action Level	Lead Paint	1	Stairwell	J-15	Stringer	Black	Metal	Intact
920015	785	2.1	mg/cm2	0.5	Positive	1	1	8/31/2021	11:36:35	Smith	Action Level	Lead Paint	1	Stairwell	J-44	Handrail	Black	Metal	Poor
920015	786	4.4	mg/cm2	0.4	Positive	1	2	8/31/2021	11:37:28	Smith	Action Level	Lead Paint	1	Stairwell	J-44	Midrail	Black	Metal	Intact
920015	787	7.3	mg/cm2	0.4	Positive	1	2	8/31/2021	11:38:38	Smith	Action Level	Lead Paint	1	Stairwell	J-44	Balluster	Black	Metal	Intact
920015	788	3.7	mg/cm2	0.5	Positive	1	1	8/31/2021	11:39:14	Smith	Action Level	Lead Paint	1	Stairwell	J-44	Stringer	Black	Metal	Poor
920015	789	0	mg/cm2	0.4	Negative	1	2	8/31/2021	11:44:40	Smith	Action Level	Lead Paint	1	Stairwell	J-55	Handrail	Brown	Metal	Fair
920015	790	4.4	mg/cm2	0.4	Positive	1	2	8/31/2021	11:45:18	Smith	Action Level	Lead Paint	1	Stairwell	J-55	Midrail	Brown	Metal	Intact
920015	791	13.3	mg/cm2	0.4	Positive	1	1	8/31/2021	11:45:55	Smith	Action Level	Lead Paint	1	Stairwell	J-55	Balluster	Brown	Metal	Intact
920015	792	3.7	mg/cm2	0.5	Positive	1	1	8/31/2021	11:47:24	Smith	Action Level	Lead Paint	1	Stairwell	J-55	Stringer	Brown	Metal	Intact
920015	793	0.3	mg/cm2	0.4	Negative	1	2	8/31/2021	11:48:22	Smith	Action Level	Lead Paint	1.5	Stairwell	J-55	Handrail	Brown	Metal	Intact

Black = Negative
Blue = Calibration/Null
Red = Positive

Intact = Paint in good condition
Fair = below De minimis levels
Poor = Above De minimis levels

Company	Heuresis Corp.	Limited Lead Based Paint Testing GSA-Goodfellow Federal Center Building 105E	 <small>ENERGY, ENVIRONMENTAL AND SAFETY SOLUTIONS</small> <small>2604 NE Industrial Drive, Suite 230 • North Kansas City, MO 64117</small> <small>816-231-5580 • www.occutec.com</small>
Model	Pb200i		
Type	XRF Lead Paint Analyzer		
Serial Num.	1098		
App Version	Pb200i-REL-4.0-29		

Job Id	Reading #	Concentration	Units	3 SD	Result	Action Level	Nom secs	Date	Time	User	Mode	Analytic Mode	Floor	Room	Side	Component	Color	Substrate	Condition
920015	794	0.4	mg/cm2	0.4	Negative	1	2	8/31/2021	11:52:37	Smith	Action Level	Lead Paint	1.5	Stairwell	North	Handrail	Brown	Metal	Intact
920015	795	3.7	mg/cm2	0.4	Positive	1	2	8/31/2021	11:53:20	Smith	Action Level	Lead Paint	1.5	Stairwell	North	Midrail	Brown	Metal	Intact
920015	796	7.1	mg/cm2	0.5	Positive	1	1	8/31/2021	11:53:58	Smith	Action Level	Lead Paint	1.5	Stairwell	North	Balluster	Brown	Metal	Intact
920015	797	2.8	mg/cm2	0.5	Positive	1	1	8/31/2021	11:54:32	Smith	Action Level	Lead Paint	1.5	Stairwell	North	Stringer	Brown	Metal	Intact

Black = Negative
 Blue = Calibration/Null
 Red = Positive

Intact = Paint in good condition
 Fair = below De minimis levels
 Poor = Above De minimis levels

Company	Heuresis Corp.
Model	Pb200i
Type	XRF Lead Paint Analyzer
Serial Num.	1098
App Version	Pb200i-REL-4.0-29

Limited Lead Based Paint Testing
GSA-Goodfellow Federal Center
Building 105F



Job Id	Reading #	Concentration	Units	3 SD	Result	Action Level	Nom secs	Date	Time	User	Mode	Analytic Mode	Floor	Room	Side	Component	Color	Substrate	Condition
920015	798	-0.1	mg/cm2	0.4	Negative	1	2	8/31/2021	12:02:31	Smith	Action Level	Lead Paint	2	Stairwell	South	Handrail Extension	Brown	Metal	Intact
920015	799	6.6	mg/cm2	0.5	Positive	1	1	8/31/2021	12:03:08	Smith	Action Level	Lead Paint	2	Stairwell	South	Midrail	Brown	Metal	Intact
920015	800	9.2	mg/cm2	0.5	Positive	1	1	8/31/2021	12:03:47	Smith	Action Level	Lead Paint	2	Stairwell	South	Balluster	Brown	Metal	Intact
920015	801	3.8	mg/cm2	0.4	Positive	1	2	8/31/2021	12:04:22	Smith	Action Level	Lead Paint	2	Stairwell	South	Stringer	Brown	Metal	Intact
920015	802	-0.1	mg/cm2	0.4	Negative	1	2	8/31/2021	12:11:02	Smith	Action Level	Lead Paint	1.5	Stairwell	North	Handrail	Blue	Metal	Fair
920015	803	-0.1	mg/cm2	0.4	Negative	1	2	8/31/2021	12:11:37	Smith	Action Level	Lead Paint	1.5	Stairwell	North	Midrail	Blue	Metal	Intact
920015	804	0	mg/cm2	0.4	Negative	1	2	8/31/2021	12:12:12	Smith	Action Level	Lead Paint	1.5	Stairwell	North	Balluster	Blue	Metal	Intact
920015	805	0.4	mg/cm2	0.4	Negative	1	2	8/31/2021	12:12:46	Smith	Action Level	Lead Paint	1.5	Stairwell	North	Stringer	Blue	Metal	Intact

Black = Negative

Blue = Calibration/Null

Red = Positive

Intact = Paint in good condition

Fair = below De minimis levels

Poor = Above De minimis levels

Company	Heuresis Corp.
Model	Pb200i
Type	XRF Lead Paint Analyzer
Serial Num.	1098
App Version	Pb200i-REL-4.0-29

Limited Lead Based Paint Testing
GSA-Goodfellow Federal Center
Building 107



Job Id	Reading #	Concentration	Units	3 SD	Result	Action Level	Nom secs	Date	Time	User	Mode	Analytic Mode	Floor	Room	Side	Component	Color	Substrate	Condition
920015	727	0.9	mg/cm2	0.2		1.0	5	8/30/2021	14:47:43	Smith	Action Level	Lead Paint							
920015	728	0.8	mg/cm2	0.2		1.0	5	8/30/2021	14:49:31	Smith	Action Level	Lead Paint							
920015	729	0.9	mg/cm2	0.2		1.0	5	8/30/2021	14:51:12	Smith	Action Level	Lead Paint							
920015	730	4.6	mg/cm2	0.5	Positive	1.0	1	8/30/2021	15:10:25	Smith	Action Level	Lead Paint	1.5	Stairwell	North	Baluster	Blue	Metal	Fair
920015	731	3.3	mg/cm2	0.4	Positive	1.0	2	8/30/2021	15:11:21	Smith	Action Level	Lead Paint	1.5	Stairwell	North	Midrail	Blue	Metal	Intact
920015	732	1.6	mg/cm2	0.4	Positive	1.0	2	8/30/2021	15:12:13	Smith	Action Level	Lead Paint	1.5	Stairwell	North	Handrail	Blue	Metal	Poor
920015	733	3.9	mg/cm2	0.4	Positive	1.0	2	8/30/2021	15:13:09	Smith	Action Level	Lead Paint	1.5	Stairwell	North	Stringer	Blue	Metal	Intact
920015	734	4.9	mg/cm2	0.5	Positive	1.0	1	8/30/2021	15:17:49	Smith	Action Level	Lead Paint	1.5	Stairwell	South	Baluster	Blue	Metal	Fair
920015	735	6.2	mg/cm2	0.4	Positive	1.0	2	8/30/2021	15:18:35	Smith	Action Level	Lead Paint	1.5	Stairwell	South	Midrail	Blue	Metal	Intact
920015	736	0.4	mg/cm2	0.4	Negative	1.0	2	8/30/2021	15:19:33	Smith	Action Level	Lead Paint	1.5	Stairwell	South	Handrail	Blue	Metal	Poor
920015	737	2.8	mg/cm2	0.5	Positive	1.0	1	8/30/2021	15:20:18	Smith	Action Level	Lead Paint	1.5	Stairwell	South	Stringer	Blue	Metal	Fair

Black = Negative

Blue = Calibration/Null

Red = Positive

Intact = Paint in good condition

Fair = below De minimis levels

Poor = Above De minimis levels

Company	Heuresis Corp.
Model	Pb200i
Type	XRF Lead Paint Analyzer
Serial Num.	1098
App Version	Pb200i-REL-4.0-29

Limited Lead Based Paint Testing
GSA-Goodfellow Federal Center
Building 110



Job Id	Reading #	Concentration	Units	3 SD	Result	Action Level	Nom secs	Date	Time	User	Mode	Analytic Mode	Floor	Room	Side	Component	Color	Substrate	Condition
920015	738	0.2	mg/cm2	0.4	Negative	1	2	8/30/2021	16:06:32	Smith	Action Level	Lead Paint	1.5	Stairwell	North	Baluster	Brown	Metal	Intact
920015	739	0	mg/cm2	0.4	Negative	1	2	8/30/2021	16:07:24	Smith	Action Level	Lead Paint	1.5	Stairwell	North	Handrail	Brown	Metal	Intact
920015	740	-0.4	mg/cm2	0.5	Negative	1	1	8/30/2021	16:08:23	Smith	Action Level	Lead Paint	1.5	Stairwell	North	Stringer	Brown	Metal	Intact
920015	741	-0.1	mg/cm2	0.4	Negative	1	2	8/30/2021	16:09:33	Smith	Action Level	Lead Paint	1.5	Stairwell	North	Handrail	Brown	Metal	Intact
920015	742	0.4	mg/cm2	0.4	Negative	1	2	8/30/2021	16:12:11	Smith	Action Level	Lead Paint	1	Stairwell	Center	Baluster	Brown	Metal	Intact
920015	743	-0.2	mg/cm2	0.4	Negative	1	2	8/30/2021	16:12:52	Smith	Action Level	Lead Paint	1	Stairwell	Center	Handrail	Brown	Metal	Intact
920015	744	-0.2	mg/cm2	0.5	Negative	1	1	8/30/2021	16:13:36	Smith	Action Level	Lead Paint	1	Stairwell	Center	Stringer	Brown	Metal	Intact
920015	745	0.5	mg/cm2	0.4	Negative	1	2	8/30/2021	16:16:23	Smith	Action Level	Lead Paint	1	Stairwell	Southwest	Baluster	Brown	Metal	Intact
920015	746	-0.1	mg/cm2	0.4	Negative	1	2	8/30/2021	16:17:07	Smith	Action Level	Lead Paint	1	Stairwell	Southwest	Handrail	Brown	Metal	Intact
920015	747	-0.6	mg/cm2	0.5	Negative	1	1	8/30/2021	16:17:44	Smith	Action Level	Lead Paint	1	Stairwell	Southwest	Stringer	Brown	Metal	Intact
920015	748	0.4	mg/cm2	0.4	Negative	1	2	8/30/2021	16:40:21	Smith	Action Level	Lead Paint	1	S. Warehouse	Northeast	Handrail	Unpainted	Metal	Intact
920015	749	0.4	mg/cm2	0.4	Negative	1	2	8/30/2021	16:42:12	Smith	Action Level	Lead Paint	1	S. Warehouse	North	Handrail	Red	Metal	Fair
920015	750	0	mg/cm2	0.4	Negative	1	2	8/30/2021	16:43:10	Smith	Action Level	Lead Paint	1	S. Warehouse	North	Midrail	Red	Metal	Intact
920015	751	0.4	mg/cm2	0.4	Negative	1	2	8/30/2021	16:43:57	Smith	Action Level	Lead Paint	1	S. Warehouse	North	Stringer	Red	Metal	Intact
920015	752	0.3	mg/cm2	0.4	Negative	1	2	8/30/2021	16:46:31	Smith	Action Level	Lead Paint	1	S. Warehouse	North	Stringer	Red	Metal	Intact

Black = Negative

Blue = Calibration/Null

Red = Positive

Intact = Paint in good condition

Fair = below De minimis levels

Poor = Above De minimis levels



OCCU-TEC

ENERGY, ENVIRONMENTAL AND SAFETY SOLUTIONS

2604 N.E. Industrial Drive, Suite 230

North Kansas City, Missouri 64117

Phone: 816-231-5580

Fax: 816-231-5641

www.occutec.com

PHOTO LOG

Client: Burns & McDonnell / GSA

Project Number: 920015



Photograph Number: 01

Description: Bldg 107 - Flaking LBP on handrail

Taken By: J. Smith

Date Taken: 8/30/2021



Photograph Number: 02

Description: Bldg 102E - LBP on stair rail components

Taken By: J. Smith

Date Taken: 8/30/2021



OCCU-TEC

ENERGY, ENVIRONMENTAL AND SAFETY SOLUTIONS

2604 N.E. Industrial Drive, Suite 230

North Kansas City, Missouri 64117

Phone: 816-231-5580

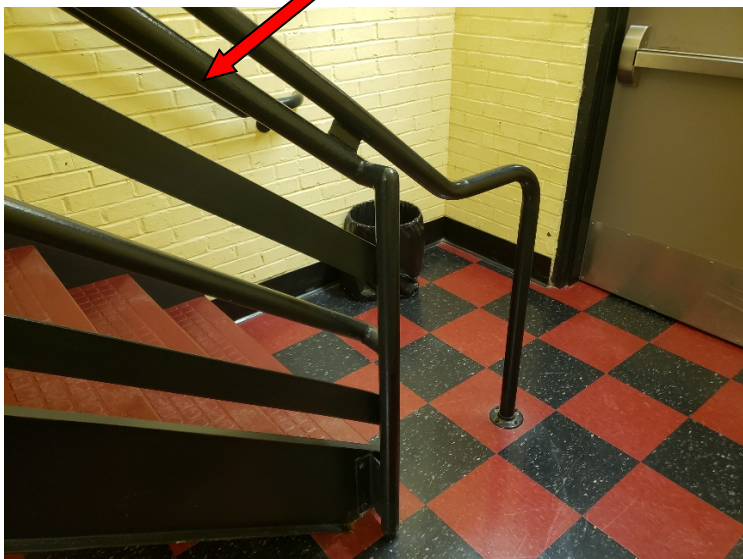
Fax: 816-231-5641

www.occutec.com

PHOTO LOG

Client: Burns & McDonnell / GSA

Project Number: 920015



Photograph Number: 03

Description: Bldg 105 - LBP on older stair rail components. Handrail extension was negative.

Taken By: J. Smith

Date Taken: 8/31/2021



Photograph Number: 04

Description: Bldg 105E - LBP on older stair rail components. Handrail extension was negative.

Taken By: J. Smith

Date Taken: 8/31/2021



OCCU-TEC

ENERGY, ENVIRONMENTAL AND SAFETY SOLUTIONS

2604 N.E. Industrial Drive, Suite 230

North Kansas City, Missouri 64117

Phone: 816-231-5580

Fax: 816-231-5641

www.occutec.com

PHOTO LOG

Client: Burns & McDonnell / GSA

Project Number: 920015



Photograph Number: 05

Description: Bldg. 103D - Flaking LBP on handrail

Taken By: J. Smith

Date Taken: 9/1/2021



Photograph Number: 06

Description: Bldg. 103D - Flaking LBP on handrail

Taken By: J. Smith

Date Taken: 9/1/2021

**STATE OF MISSOURI
DEPARTMENT OF HEALTH AND SENIOR SERVICES**

LEAD OCCUPATION LICENSE REGISTRATION

Issued to:

Jeffrey T. Smith

The person, firm or corporation whose name appears on this certificate has fulfilled the requirements for licensure as set forth in the Missouri Revised Statutes 701.300-701.338, as long as not suspended or revoked, and is hereby authorized to engage in the activity listed below.

Lead Risk Assessor
Category of License

Issuance Date: **3/16/2021**
Expiration Date: **3/16/2023**
License Number: **010316-200089640**



(b) (6)

Randall W. Williams, MD, FACOG
Director
Department of Health and Senior Services

Lead Licensing Program, PO Box 570, Jefferson City, MO 65102